

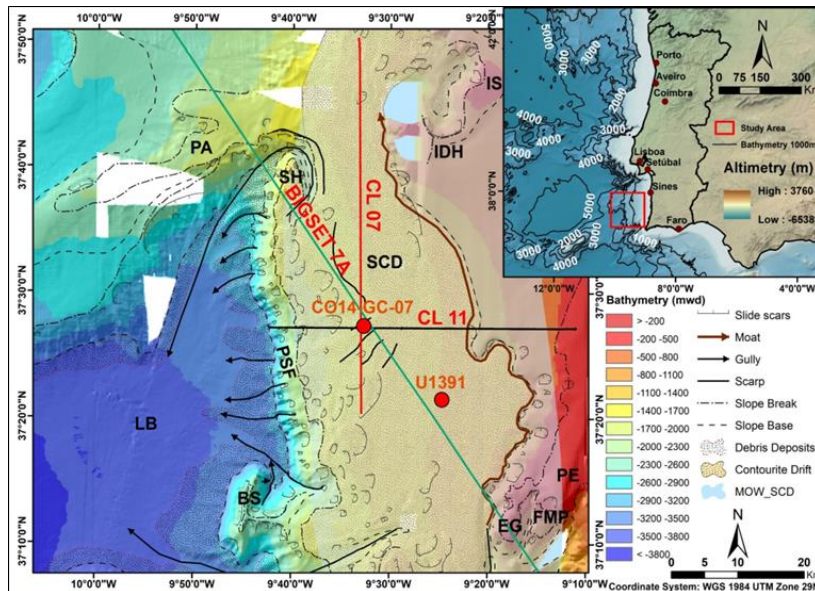


14 Marzo 2023, ore 10:00

Aula Lucchesi

Dipartimento di Scienze della Terra, Edificio CU005

Morphosedimentary characterization of the Alentejo Margin (SW Iberian Margin) during the Late Pleistocene-Holocene



Programma

Ore 10.00 Manuel Teixeira

Morphosedimentary characterization of the Alentejo Margin (SW Iberian Margin) during the Late Pleistocene-Holocene

Link for the webinar:

<https://meet.google.com/xiv-ucfj-wvk>