

# Visual intelligent solutions to inform business decision making

WaterView deck - November 2024





# WHY...

There is 1 billion CCTV cameras installed worldwide...

... but less than 10% is really used

due to high costs of management, maintenance, data transmission and storage, privacy and security issues.



# WHAT WE DO

WaterView turns any camera into  
an **intelligent sentinel**

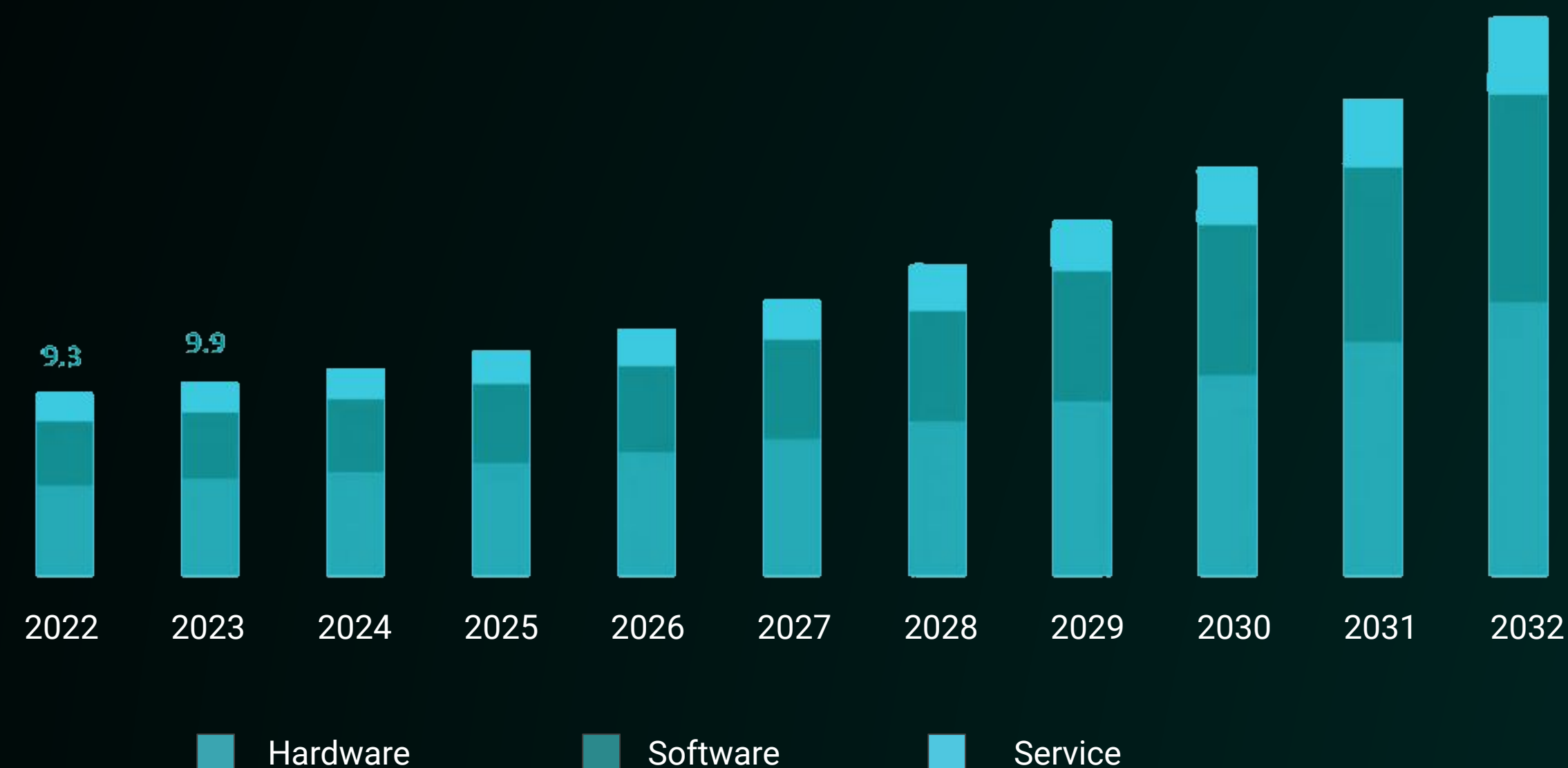




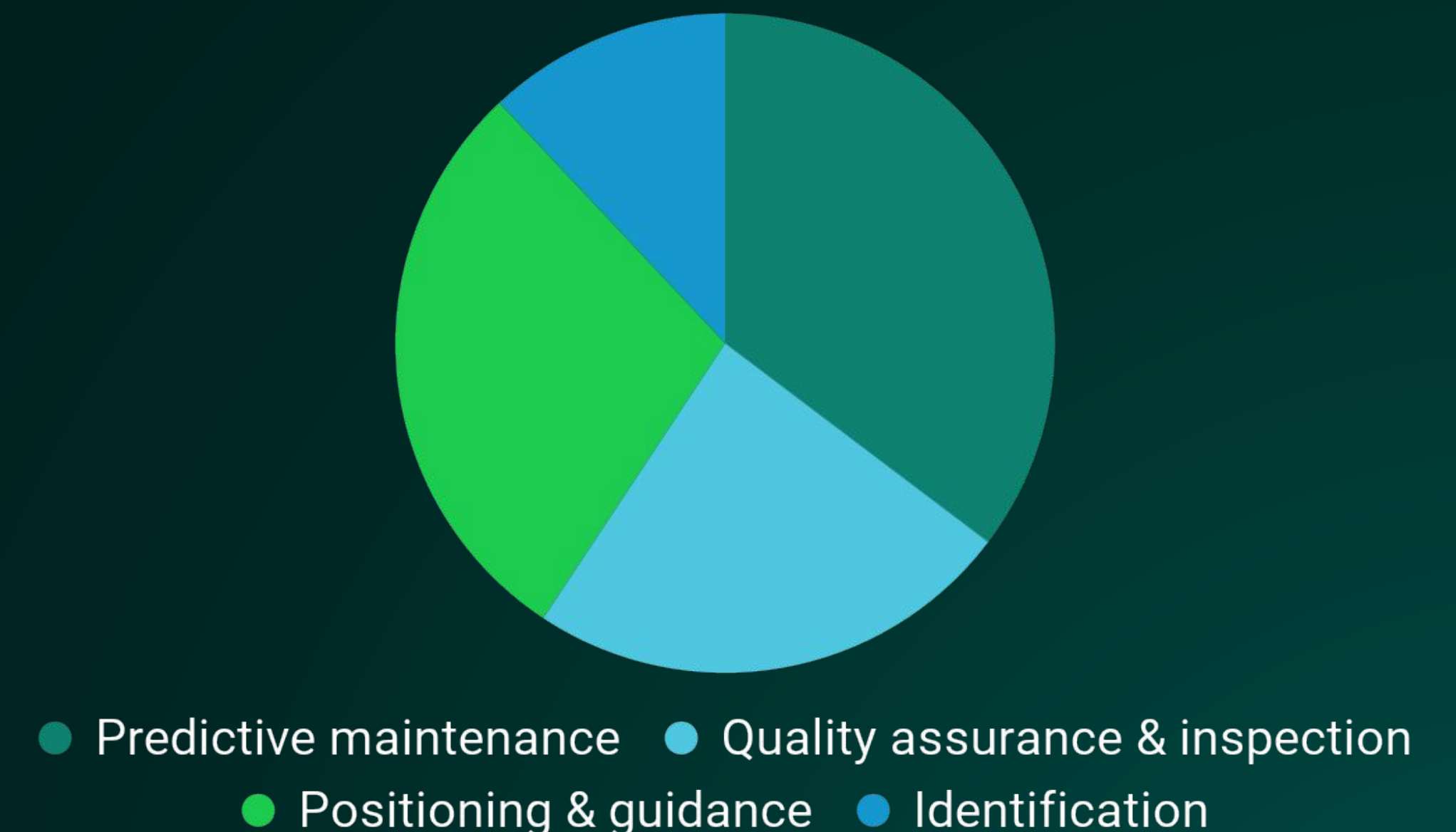
# WHEN: NOW!

AI in Computer Vision Market size is valued at USD 10.5 billion in 2024 and is expected to observe over 10% CAGR from 2024 to 2032

AI in computer vision market, by component, 2022-2032 (USD billion)



AI in computer vision market share, by application, 2023







# HOW WE DO IT

- Our solutions are camera agnostic, i.e. use images captured by any camera (still or moving)
- Our solutions analyze and anonymize images at the edge (close to the sensor)

## KEY FEATURES

- Sustainable
- Modular
- Cyber secure
- Privacy compliant



# WHERE WE PLAY

## Smart Roads



## Smart Towers



## Smart Cities



## Smart Manufacturing



We serve customers to collect information from the field to:

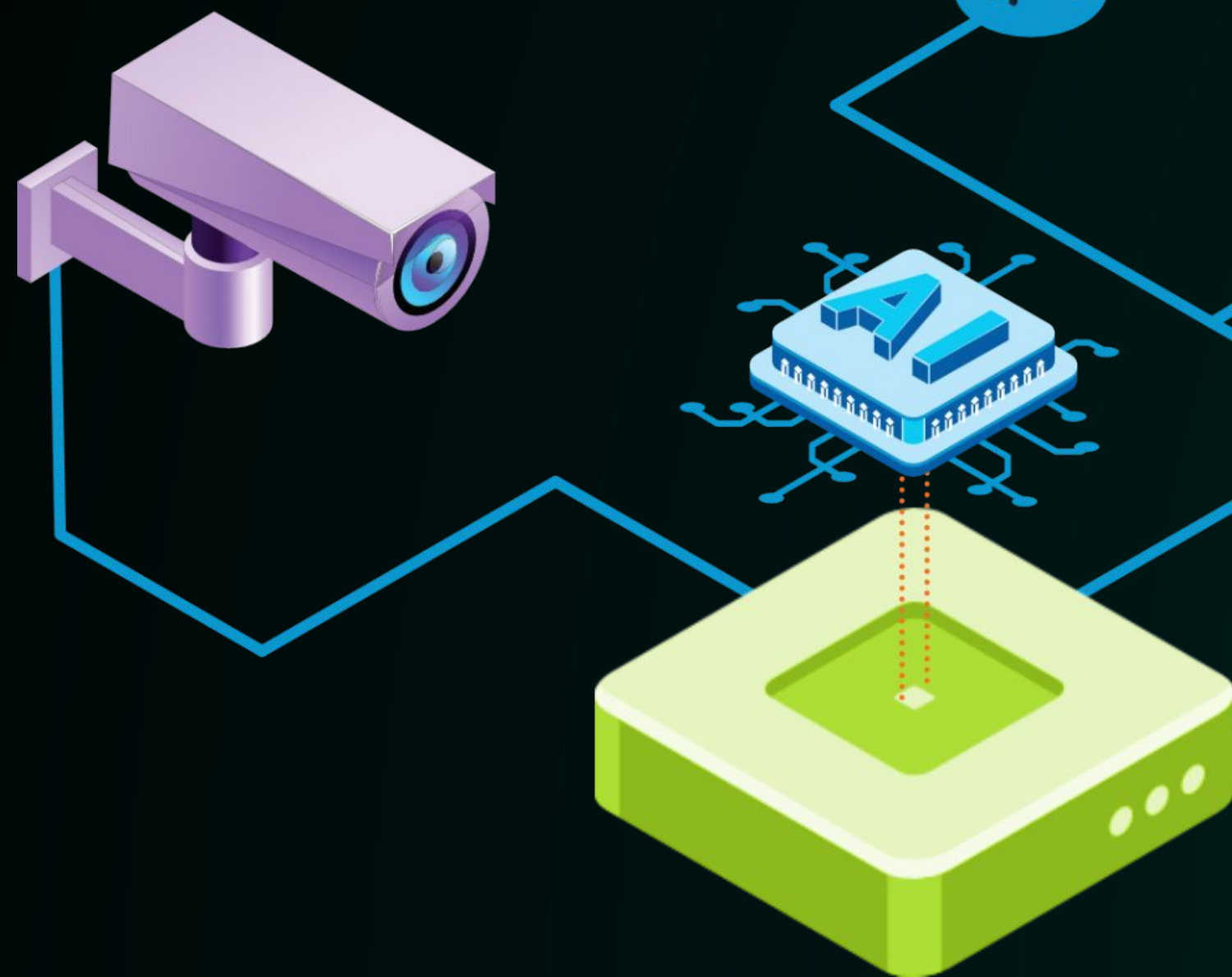
- manage ordinary operations
- plan maintenance activities
- ensure safety of users and operators



# click

## Climate Camera Kit

CLICK is a suite of visual AI functions for weather, climate and environmental monitoring





# Road weather



To automatically detect current weather conditions from cameras, alert drivers for local hazards and support pro-active maintenance operations



Transport network operations



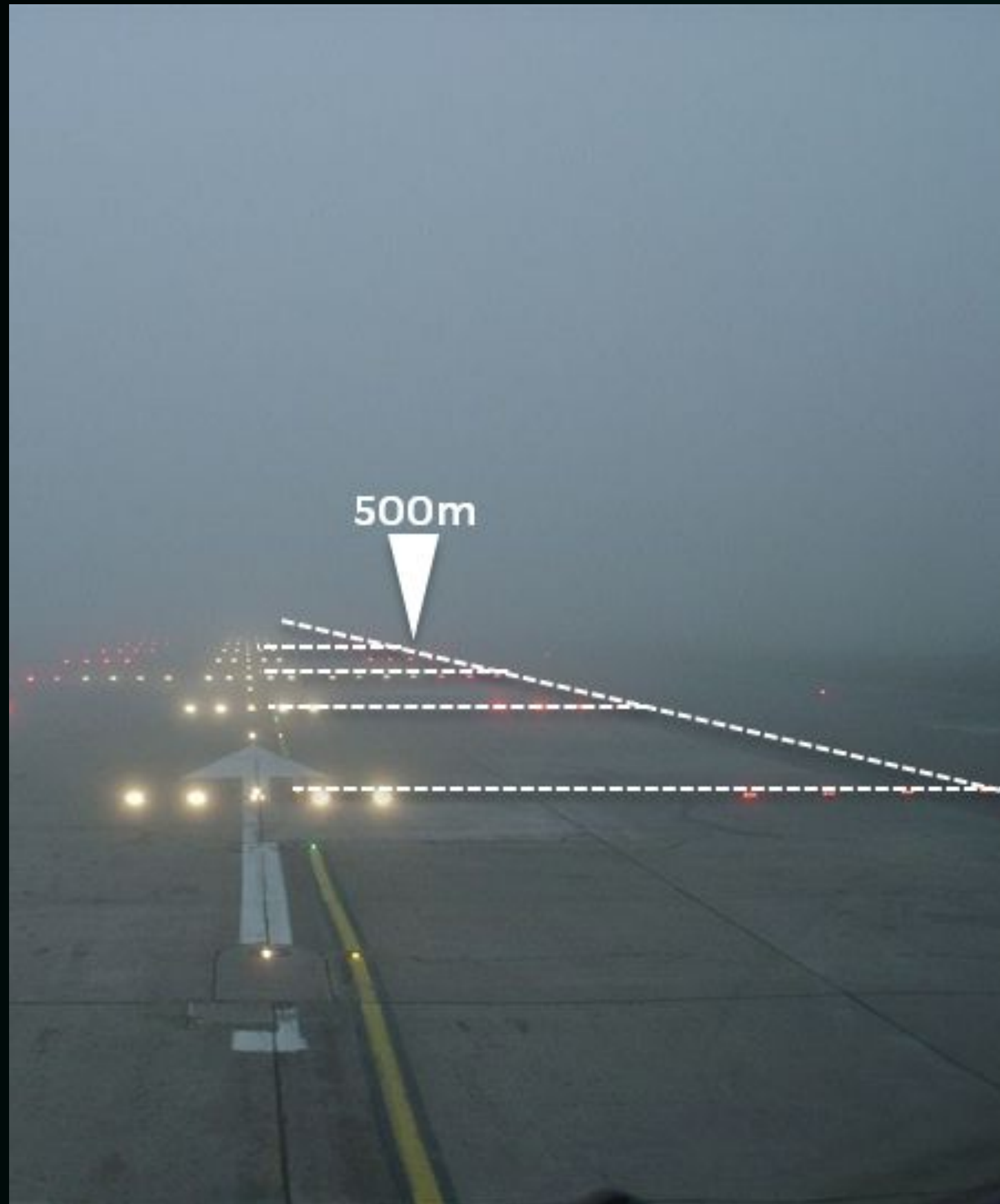
Infrastructure safety



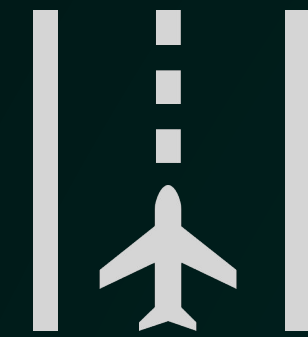
Fleet management



# Airport prevailing visibility



To estimate the prevailing visibility distance in airport runways from cameras, alert control towers for poor visibility conditions and support air traffic management operations



Airport operations



Adaptive lighting



Transport network safety



# Early warning for ice risk



To early-warn for the inception of ice-hazardous events from cameras, alert infrastructure managers for pro-active maintenance and support people safety



TSO & DSO operations



Industrial safety



Transport network safety



# Wildfire early warning



To automatically early-detect smoke plumes and fires from cameras, prevent wildfires and reduce the time of intervention by fire fighters



Wildfires prevention



Infrastructural safety



Industrial safety



# Urban flash floods



To automatically identify flooded areas (and liquid spills) from cameras in order to prompt aware reactions in urban, transport and asset management operations



Urban water management



Transport network operations

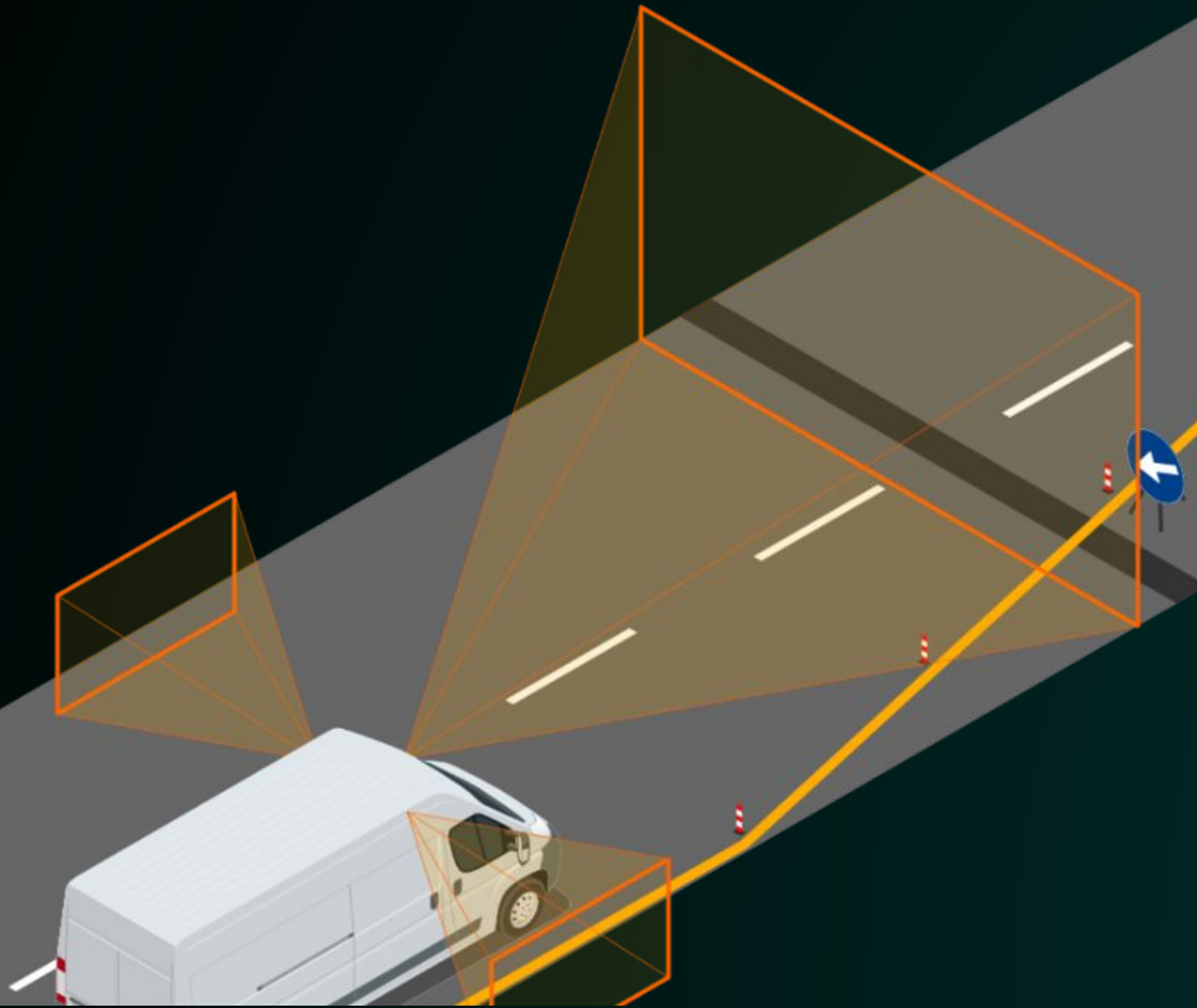


Industrial safety



# track

## Transport Camera Kit

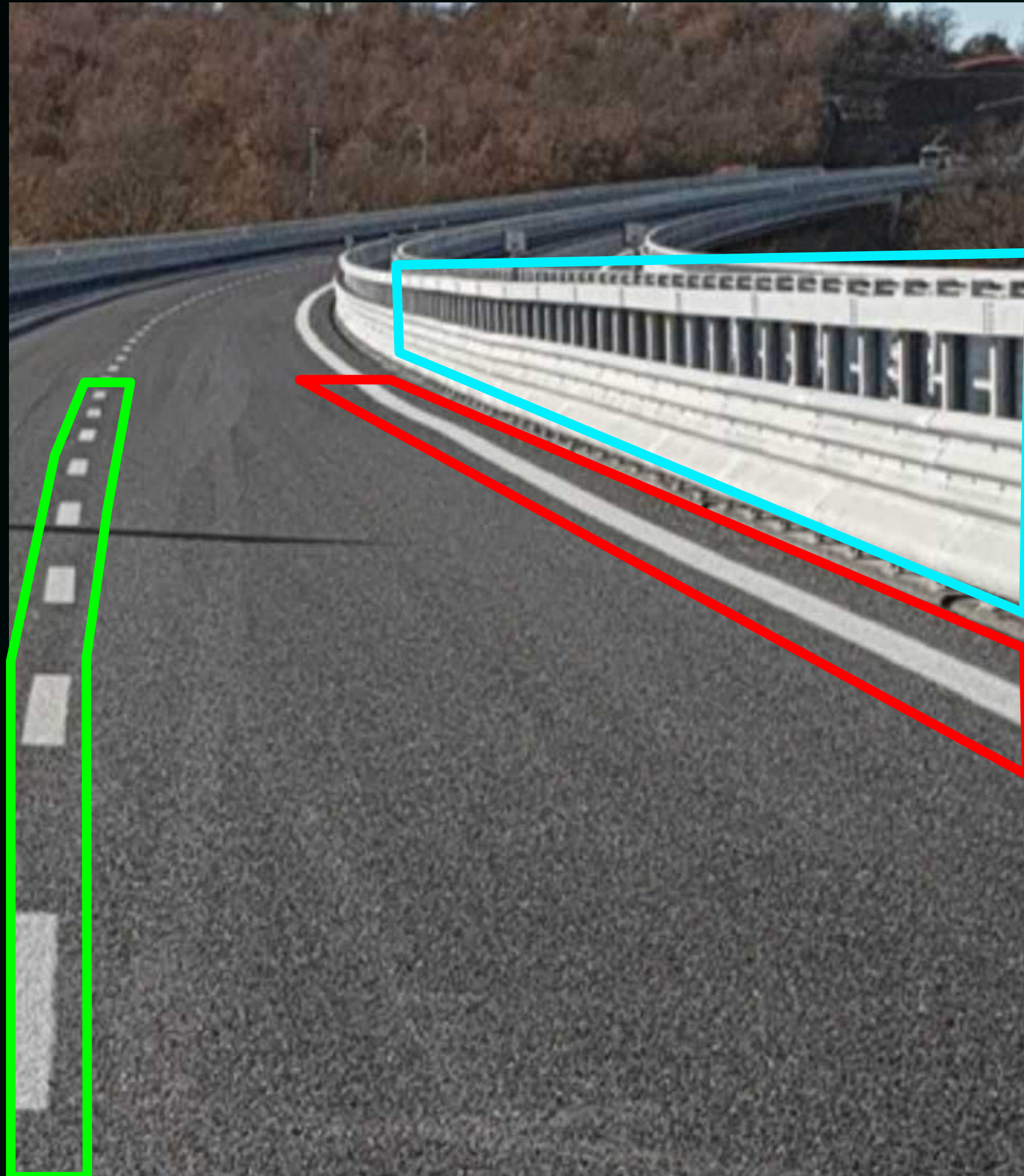


Track is a collection of advanced visual AI analytics to perform road/rail asset inventory while monitoring their quality.





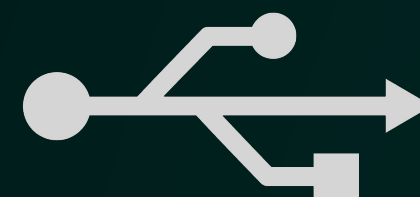
# Road digital twins



To digitize road infrastructure assets and generate digital maps with information relating to vertical signs, accesses, barriers, works of art, etc.



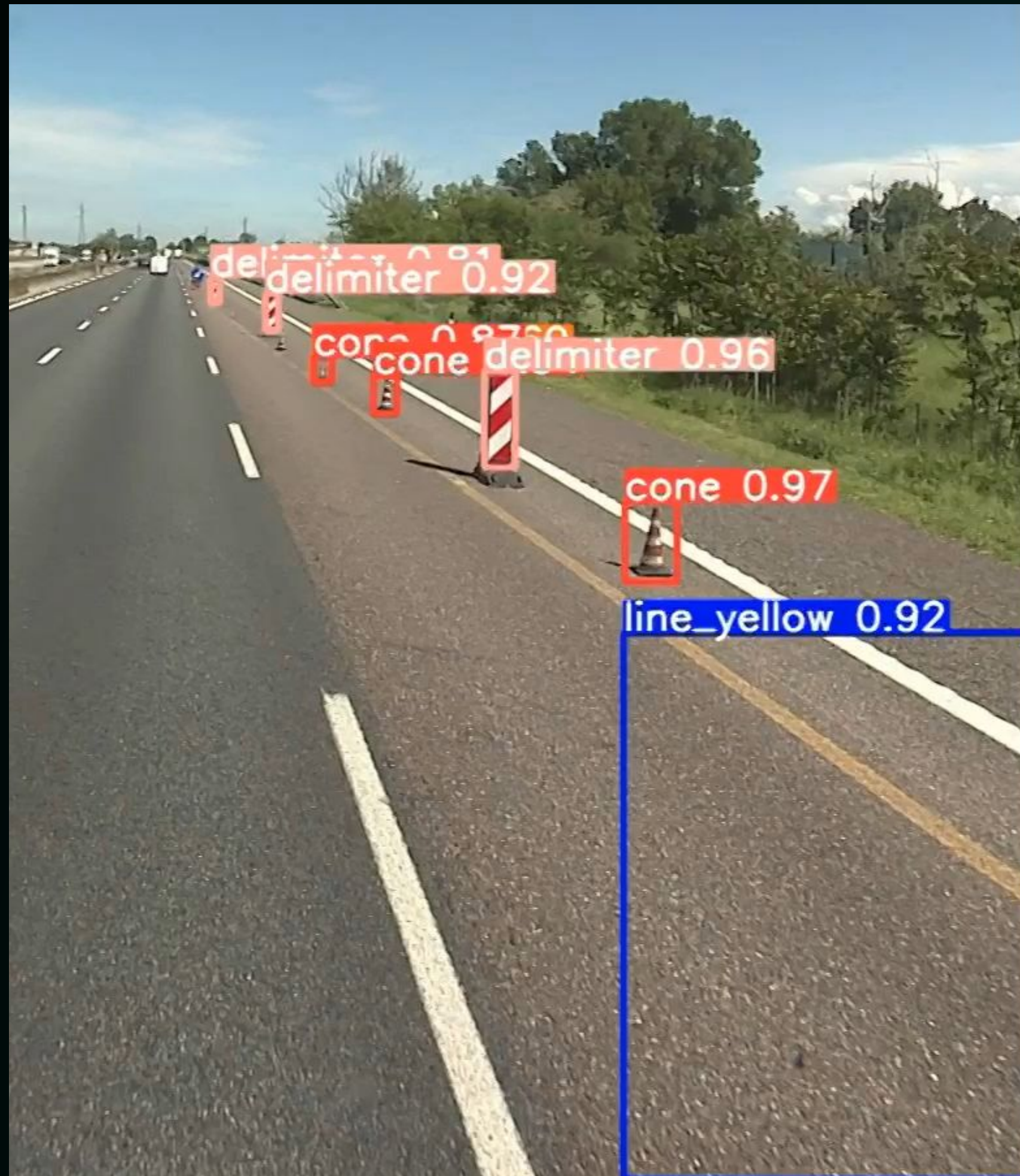
Maintenance and management of transport networks



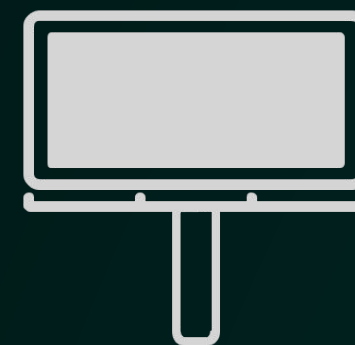
Digitalization and infrastructure 4.0



# Road signs compliance



To automatically identify the correct positioning of temporary and permanent signs, for the safety of workers and users of the road infrastructure



Compliance of roadworks signs



Safety and operation of transport networks



# Infrastructure defects

To automatically identify defects and damage to infrastructures, using fixed or moving cameras, supporting ordinary and extraordinary maintenance activities



Transport networks operations



Infrastructure safety





# Vegetation interference



To track patches of unwanted vegetation along the road/railbed using on-board vehicle cameras, supporting periodic maintenance where the indiscriminate use of pesticides is not permitted



Ecological maintenance



Transport network operations



Industrial safety



# Waste management

To identify anomalous situations due to excessive accumulation/abandonment of waste, to support the optimization of collection operations



Transport networks operations



Urban safety and management



# TEAM



**Paola Allamano**  
CEO, founder



**Alberto Bert**  
COO



**Paolo Cavagnero**  
CMO, founder



**Matteo Ferrabone**  
CTO



**Alberto Croci**  
CRO, founder



**Ruben Ricupero**  
Chief data  
scientist



**Davide Anselmi**  
Data Scientist



**Gorkem Arpakci**  
Data Scientist



**Eda Semercioglu**  
Data Designer



**Manuel Giolo**  
Devops Engineer



**Roberto Serra**  
Devops Engineer



**Sonia Dahlawi**  
Administrative  
assistant





waterview  
visual intelligence

Via Vittorio Alfieri, 24  
10121 Torino  
Italy

[www.waterview.ai](http://www.waterview.ai)  
[info@waterview.it](mailto:info@waterview.it)