

INTERNATIONAL STUDIO

REVITALISATION BY RECONCILIATION
Design Strategies for Cross Border Regions

RESULTS

La Sapienza Università di Roma
REGENERATING BEKKERVELD DISTRICT
PARKSTAD



october 2016



TABLE OF CONTENTS

INTERNATIONAL STUDIO RESULTS

Sapienza Università di Roma

PROGRAM	6
European Framework_EU Urban Agenda	6
Cross-border Strategies	6
IBA method_an integrated approach	7
Mutual contributions	8
Short term: IBA INTERNATIONAL STUDIO - Venice 2016	9
TEST CASES	13
1. The north gateway of Schinveld Airport on the German border	14
2. The Roman Quarter in Heerlen city centre	14
3. The north/south axis between Aachen and Heerlen	15
4. The Bekkerveld District in Heerlen south	16
REGENERATING BEKKERVELD DISTRICT, PARKSTAD	22
Issues and New Potentiality of Bekkerveld District	22
The Renewal Proposal	22
Bekkerveld Educational and Lifelong Learning Hub	22
Effects And Prospective Sponsors	23
The Project	23
Results - Final Presentation	24
REPORT	44
Objectives and aims of the International Studio Venice 2016	44
First results of the International Studio	45
Follow up procedure & implementation of research in design process	45
Contact persons research units	46

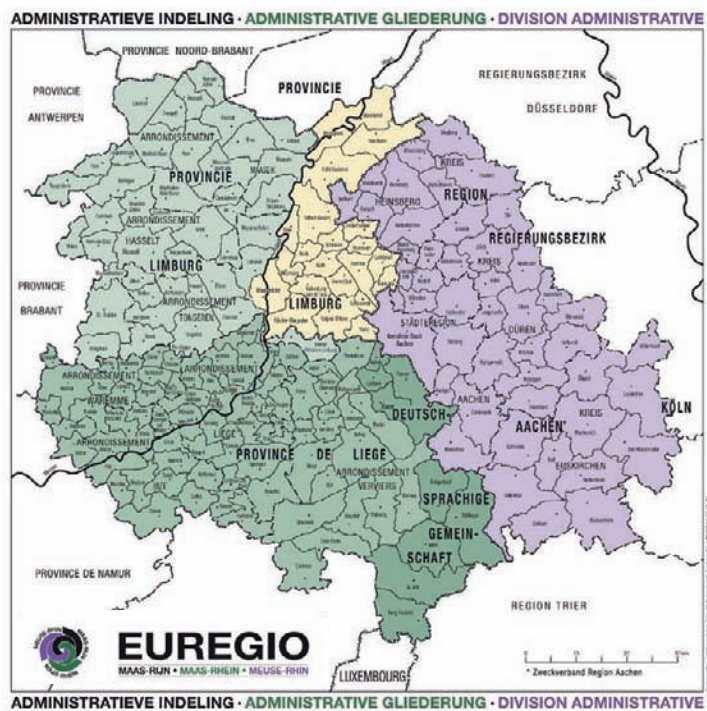
PROGRAM

European Framework_EU Urban Agenda

IBA International Studio constitutes an experimental partnership initiative between European Academies to support new methodologies and tools for spatial and urban design within the Internationale Bauausstellung (IBA) context. The aim is to establish a common dialogue and a shared platform of knowledge, presenting its results to the attention of the European Commission for Cities and Regions, nowadays involved in promoting a new Urban Agenda for sustainable growth and policies' innovation. In specific the EU Urban Agenda, which has been established in May with the subscription of the Pact of Amsterdam by the European National Ministers, aims to promote cooperation between member states, in order to stimulate growth, liveability and innovation through cities in Europe. By adopting the Urban Agenda, the Public Authorities would encourage better public governance, support urban experimentation, and would answer to the increasing demand of citizen participation.

This new approach includes the development of a range of European partnerships. Within the partnerships, the European Commission, Member States and European cities will work together for the coming years improving regulations, utilisation of European funds, sharing best practices and cooperation between cities. Each Partnership will look at three main issues: better regulation; better use of financial instruments; better knowledge exchange.

This political manifesto, however, needs a concrete implementation. That is the reason why the European Union is now eager to set up an Urban Proof. In this direction the International Studio – within the IBA Parkstad process - can be an innovative example of integrated approach for urban and territorial processes of transformation. The main cores of this task will be to identify and support new tools and methodologies for spatial and urban design. The EU Urban Agenda is also promoted by the Dutch Government through the instrument of City Deals. It consists of agreements between cities and the national government to facilitate urban renewal and innovation for major societal challenges. An important focus in the Dutch City Deals seems to be urban innovation and transformation towards more sustainability and competitiveness.



Cross-border Strategies

A specific key issue, which can be relevant for the EU context and IBAs (Parkstad among other current and future IBAs), is about shared policies and common programs of transformation in Cross Border Regions. The opportunity to reflect on this more general issue is given by the exhibition Revitalization

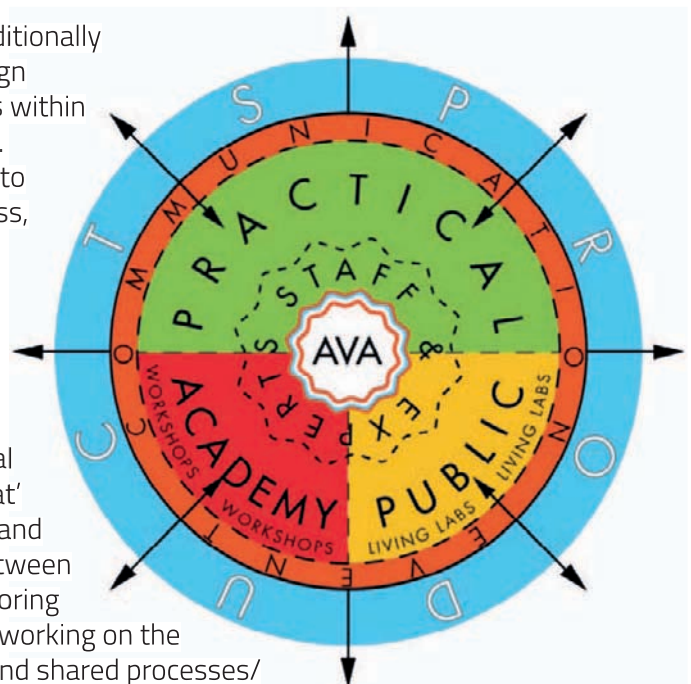
by Reconciliation. The exhibition is an official Collateral Event present at the Biennale of Architecture Venice 2016 Reporting from the front, hosted at the Querini Stampalia Foundation and promoted by IBA Parkstad, Noord Holland Coastal Development and the Euregio Meuse-Rhine. In that sense also the experience of IBA Parkstad is seen through a transnational lens of observation as part of the Euregio Maas-Rhine. The cross-border approach focuses on regional development restoring (former) European communities, beyond national borders. Bringing the cross-border issue into the public debate on a European level might mark the starting point for a reflection on the means to overcome physical, economical, administrative, or bureaucratic barriers and obsolete practices.

IN CONTRAST TO MANY CURRENT APPROACHES THAT WORK ON TERRITORIES, CROSS-BORDER PROCESSES SHARE TERRITORIES. BY DOING SO, THE REGIONS MOBILISE A WIDE RANGE OF ITS RESOURCES, SUCH AS LANDSCAPE, INFRASTRUCTURE, ECOLOGY, HERITAGE, EXISTING BUILDINGS, INDUSTRY OR CULTURE. BY ESTABLISHING CONNEXIONS BETWEEN THE EXISTING, IT REDESIGNS THE TERRITORY ALLOWING IT TO BECOME MORE THAN A SUM OF FUNCTIONAL ELEMENTS, AND TO REFORMULATE ITS IDENTITY. IN COMPLEX AND RAPIDLY CHANGING ENVIRONMENTS SUCH AS EUROPE'S TERRITORIES AND IN A TIME OF CRISIS, THE PROJECT PROVIDES AN EXPERIMENTAL TOOL FOR ACTIVATING FORMS OF TRANSFORMATION THAT MAKE SENSE.

Moreover cross border strategies can be a powerful framework to reflect on overcoming constraints of the crisis, thinking beyond the dichotomy of top-down and bottom-up solutions inside national borders. The scope of IBA International Studio ambition is huge, but essential for border regions. To be specific, it is by developing and fostering a strong international network that IBA Parkstad in particular and the cross-border strategy in general, can prove its value and usefulness. A high degree of international awareness ensures that the region is taken seriously from outside. The IBA International Studio aims to contribute in that: enforcing an expertise network for Cross Borders Strategies in European Spatial Design. According to the main themes and issues of past, current and future IBAs, the International Studio aims to involve Academies, Cultural Institutions and future generation of professionals for constructing cooperation within the spirit of a common knowledge network.

IBA method_an integrated approach

The Internationale Bauausstellung (IBA) is traditionally known as a German strategic large-scale design instrument that provides a significant impetus within regions aiming at transition or transformation. During the last twenty years IBA had grown into an increasingly more open and complex process, binding together spatial, economic and social challenges. Parkstad, together with Basel, represents a further step for IBA, as they are the first editions outside German borders. This enlargement, that will be followed also by other regions in the coming years (i.e. IBA Candidate Wien), highlights a new international phase that shows IBA as an "exportable format" for European regions. During last years, more and more, procedures and methods are shared between the editions, up to the organisation of a Monitoring Committee (IBA meets IBA) that is constantly working on the possibility to interlace specificity of contexts and shared processes/ approaches, what could be understood as IBA Method.



In IBA Parkstad, for example, the main characters of this complex process are:

- Approaching global issues from a specific context: the edition is grounded locally, the general global issues are based and explored by a process of listening specific territorial needs.
- Integrated approach: the working method of IBA process is similar to a collector framework,

literally constructing around the region a mosaic of knowledge. It is mainly provided by: roundtable within several parties (economy, society, institutions, academy); independent analysis about current and past criticalities/potentials on spatial and economical level; mixed policies (bottom-up and top-down) with the selection of candidate projects by open call procedure and the definition of an advisory board of experts to help local institutions and curator staff during the selection process;

- A threefold Structure: beyond the curatorial organization and the Q-board monitoring quality of candidates projects/processes, the IBA instruments concern the project development area (IBA Practical); the advisory panel (IBA Academy); the civic participation (IBA Public);
- Forming alliances: the focus of IBA is to bind spatial dynamics with economic forces, social parties and knowledge institutions. For that reason, it is composed by a tripartite structure: practical/public/academy (i.e. IBA Parkstad);
- An operational instrument: perhaps the most important aspect of IBA stands in its particular nature of being an operational model; it is an encounter of theory and practice within a defined term (mostly 7 years) to foster the present historical moment towards future.

THESE 'CORE BRAND VALUES' DRIVE INTERNATIONAL RECOGNITION FOR THE IBA FORMAT. WORLDWIDE, THERE EXISTS NO INSTRUMENT OF COMPARABLE EFFECTIVENESS FOR CITY AND REGIONAL DEVELOPMENT.

The idea of an exportable format does not mean, then, its repeatability in context everywhere, but more it underlines the awareness to improve a common ground, even going beyond national borders, to share issues, policies and design strategies in order to face socio economic dynamics that reflect on contemporary territorial changes all over Europe.

Mutual contributions

The International Studio is more than a workshop. It aims to form alliances on a European level, by constituting an international Panel of Academies that could support IBAs current and future processes of transformations as well to interact on the EU board for the European Commission for Cities and Region acting on the urban agenda for future development of urban areas, as exemplar initiative. IBA International Studio constitutes an experimental partnership initiative between European Academies to support new methodologies and tools for spatial and urban design within the Internationale Bauausstellung (IBA) context.

This mutual contribution to IBA Parkstad process is organized in different terms/temporalities:

SHORT TERM: IBA INTERNATIONAL STUDIO IN VENICE 2016

In the short term (2016) the organization of a research workshop constitutes the start of the STUDIO. The workshop has its main focus in IBA Parkstad understood as part of a broader cross border region (Germany, Belgium, Netherlands). The workshop will take place between June and September in Venice, hosted by IUAV Istituto Universitario Architettura Venezia, as part of the Revitalization by Reconciliation Collateral Event. By showing the new developments of the current IBA Process, it is meant to be a representative of what would be a repeatable model for Cross-Border Regions and declining urban areas at the international Platform of Venice Biennale. This will be more than an Exhibition by establishing an International Studio and a series of meetings. The results and Policy Recommendations of this Workshop will be presented during the European Week of Cities and Regions in Brussels in October, organised by the Committee of the Regions and the European Commission, addressing European Authorities (10-13 October 2016). The results will after also be exhibited in Venice (November 2016).

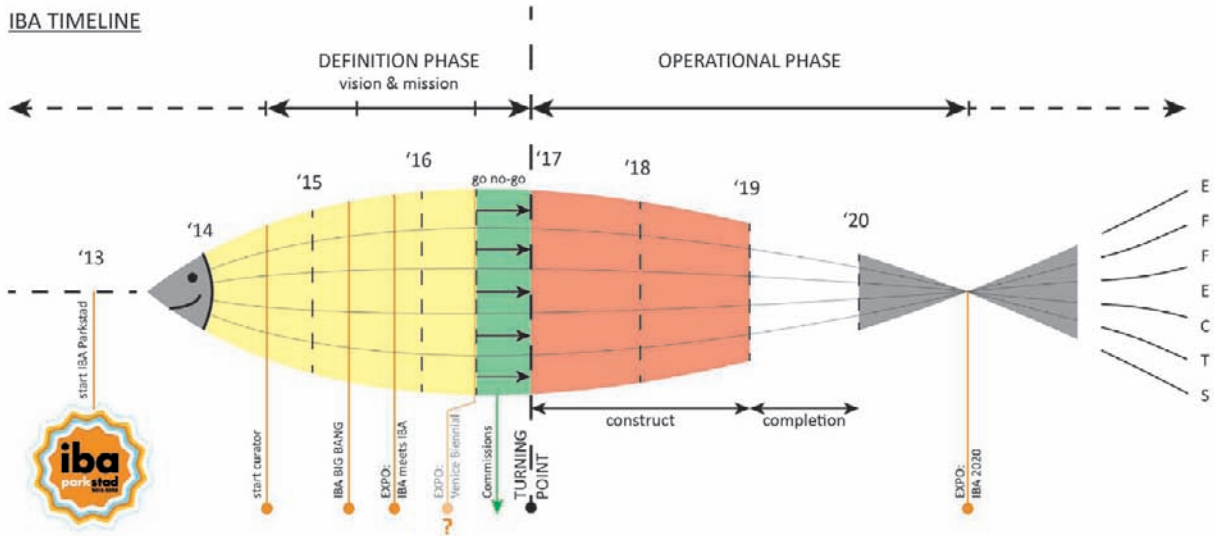
MID TERM: EDUCATIONAL AND RESEARCH ACTIVITIES 2016/2018

Each participant university will develop IBA issues, according to its own institutional programs (education and/or research) and consequently to the results of the research workshop (SHORT TERM). During this biannual period (2016/2018) will be addressed also the International Students internship (PEP; Professional Experience Period) and will be supported by other exchange activities (seminars and conferences). The 2018 will be also the next appointment again for the Biennale of Architecture in Venice with the aim to involve also current and future IBAs Candidates (Vienna, Stuttgart) interested in

forming alliances for IBA Academy Panel and Advisors Board. At the end of the Mid Term the intention is to prepare the publication of the research/educational activities results.

LONG TERM: FINAL EXHIBITION IBA PARKSTAD 2020

As final step of a long-term mutual contribution within IBA Parkstad, Participant Academies will take part of the final exhibition in Parkstad, through the selection of representative projects and researches from each university.



Short term: IBA INTERNATIONAL STUDIO - Venice 2016

The Flywheel, with its five innovation themes, gives `Schwung (momentum) to the Parkstad region:

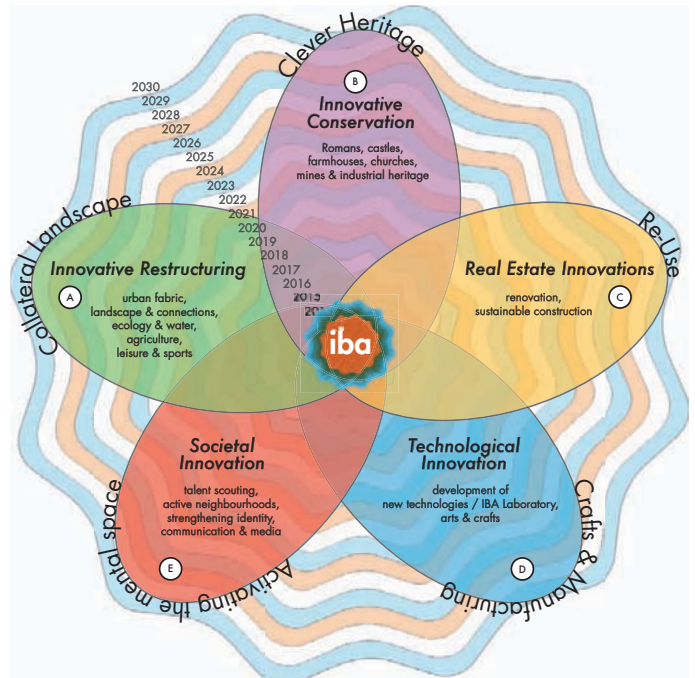
CLEVER HERITAGE:
Innovative Conservation;

RE-USE:
Real Estate Innovations;

CRAFT & MANUFACTURING:
Technological Innovations;

ACTIVATING THE MENTAL SPACE:
Societal Innovations;

COLLATERAL LANDSCAPE:
Innovative Restructuring



TOPICS AND OBJECTIVES

The International Studio is an experimental project that links, according to the goals and the guidelines of IBA, research and education, constructing a more general/critical reflection on design strategies for Parkstad area. The objective of this Studio is to enforce a broader academic framework on an international level capable to act with a positive impact within the IBA Process. The activities of the International Studio, seminars and student workshops, are finalised to explore key issues for Parkstad and its cross-border condition; key issue are approached through the IBA perspective, i.e. the encounter between theory and design.

Participant universities will focus on the general topic of Revitalisation by Reconciliation: Cross Border Strategies. For Parkstad the objective is to enlighten a new narrative made by re-composition of the fragmented urban landscape, reconciling over impressed and layered territorial frames into a revitalised meaningful unity. It also regards the development of an operational exemplary method to address urban cross- border regional problems and to disclose new economic growth potentials.

NOT JUST AS A CASE STUDY, BUT AS A WIDELY APPLICABLE WORKING METHOD TO FACE URBAN PROBLEMS AT LARGE BY SETTING UP SMART TERRITORIAL SCHEMES AND PROCESSES. IBA PARKSTAD CAN BE SEEN AND USED AS AN EXAMPLE OF THE WAY INTER- REGIONAL COLLABORATION CONTRIBUTES TO A BETTER UNDERSTANDING OF THE POTENTIAL OF CITIES IN REALIZING A NEW, VITAL URBAN ECONOMY AND A SOCIALLY, ECOLOGICALLY AND SPATIALLY SUSTAINABLE DEVELOPMENT.

The topics, identified as common issues of IBAs as European manifest of contemporary strategic spatial design and policies, are here traced as preliminary guidelines in which each department/ university can find its position. The topics constitute a common GRAMMAR in which Parkstad areas and candidates' projects can be associated within the activities of the INTERNATIONAL STUDIO.

REGENERATING LANDSCAPE

The topic relates to innovative actions of restructuring the existent landscape understood as layered structure of several human interventions. In Parkstad the landscape has been subjected to productive extractions since the mining era. The intention is to investigate actions to renovate the use of landscape in a more integrated way in order to promote its use as leisure area, but also as a pilot economical force toward tourism and sustainable environment (COLLATERAL LANDSCAPE). Structure landscape & connections.

Within this theme it is about the arrangement and structuring of the landscape and the connection between different sub sectors. Clear structures and connections increase the recognisability, the orientation and thus the identity of the region. the IBA agenda wants to contribute to the realisation of new, the improvement of the existing green and infrastructural connections between districts, neighbourhoods and municipalities, as well within the cross border area.

- **Ecology and water**

The protection and the improvement of the ecological and hydrological values/qualities of the landscape, for example the diversity of the natural values or the re-naturering of the brook landscape, is part of the investigations' issues.

- **Productive and leisure landscape**

Also part of the Studio task will be the reinforcement of productive open space by several type of agricultural activities. For example the production of crops (for biomass, nutrition or grazing) or for the sake of energy. Or for example industrial activities, such as the mining of raw material, but also recycling and storage of ground, water and waste. As alternative productive use of the landscape is also important to include leisure/sport activities for tourism and citizens.

IMPLEMENTING URBAN INTENSITY

The contemporary portrait of Parkstad is mainly characterised by an indistinctive urban agglomeration, made by the sum of several villages that recognise in Heerlen the biggest urban fabric. The investigations should address the possibility of reinforcing urban proximity in order to create specific urban clusters (institutions, economic districts etc.) and at the same time to improve actions of Societal Innovations (ACTIVATING THE MENTAL SPACE). This affects citizens who take control themselves and come up with initiatives for the innovation of neighbourhood or town. In case of active neighbourhoods it is about Social 'Empowerment'.

ENERGY TRANSITION

The topic relates to the urgency of a deep investigation on technological innovations in sustainable energy, that is a general theme addressed by Iba Parkstad. Energy has always been an important theme within Parkstad. In the old days because of the mining of pit coal and brown coal. Nowadays energy is delivered from multiple energy sources. There are parties that develop a new energy generation and/or distribution system on the basis of cooperation. IBA stimulates small- and large scale innovations with regard to energy generation and distribution in the region.

The themes is also related to Reuse/Recycle as well to productive landscape.

CLEVER HERITAGE

The topic of Heritage relates to Innovative actions of conservation (CLEVER HERITAGE) for the rediscovering of the underestimated past of Parkstad, as well its implementation for future development of the region, locating itself within a cross border and transnational cultural routes that mainly regard the Roman settlements and connections (Via Belgica); the Religious heritage; the Mines and industrial heritage.

- **Roman heritage**

In Parkstad many elements can be found from the Roman occupation of the area. The city of Coriovallum – the current Heerlen – was situated at the junction of two important roads, the Via Belgica and the Via Trevorum. Coriovallum was the largest Roman city in the Netherlands and therefore Parkstad houses the richest and most extensive Roman heritage in the country. With the Thermae museum Heerlen accommodates also the most important Roman monument. Except for the remains of the Via Belgica there are several remains of Roman villas throughout the Parkstad region. IBA tries to make the vast scattered Roman remains better visible and accessible for a large audience.

- **Religious heritage**

In Parkstad there are more than 200 churches and some unique monasteries/convents. It is to be expected that fifty percent of these objects will no longer be in use in the next few years. The preservation and sustainability of this religious heritage receives attention at IBA.

- **Farmsteads & castles**

Monumental farmsteads and castles typify Southern Limburg. Many of these monumental buildings are currently occupied or run as a restaurant or hotel. A number of these buildings is in a bad condition. IBA intends to provide an impulse for these monuments and to link them to new, sustainable and innovative functions for use.

- **Mines & Industrial heritage**

Industrial heritage is a broad concept that contains both monumental buildings and old factory warehouses, water towers and schools. IBA is aware of such iconic heritage in the region Parkstad and tries to preserve these buildings as much as possible. Also the already torn-down mines fulfil a special position. Nowadays there are only a few visible elements left of this typical past. Attempts are being made to translate this past towards the future.

REUSE; RECYCLE; RECONVERSION & DEMOLITION

The phenomenon of shrinking and ageing population is a fundamental character of today Parkstad as well as it is in the framework of the cross border region. The topic is related to the real estate innovation (RE-USE) in existing urban fabrics.

- **Reuse of urban fabrics**

It is necessary that the existing supply of housing is adapted to the current housing requirements. In this matter making houses course of life-proof, within the scope of the ageing issue, is an important theme, as well as the energetic sustainability of the existing real-estate. IBA aspires to transform former building sites into new small-scale and high-quality housing conditions in districts, neighbourhoods and the public domain. Here the inhabitants play an important role. Also due to the 'demographic stagnation' in the future many buildings, including houses, offices, care and community centres and schools, will lose their function. In order to find a new destination in some cases a building will have to be adapted and also often to be redesigned for other purposes. And in rare cases buildings even will have to be 'reduced' or torn down.

- **Recycling materials**

In the coming decades Region Parkstad faces a large demolition challenge resulting in the release of much building material. The mining industry has left behind many waste mountains and mine shafts filled with tepid water. IBA sees Parkstad as an experimental garden for the recycling of (building) material, raw materials, waste, food and water.

The research units involved in the international Studio will contribute in defining the above-mentioned general issues, through a research by design approach. The "research by design approach" is here intended to be achieved by a double trajectory. On one hand the theoretical research will be grounded

on the background knowledge of the involved universities, moreover declined within the specificity of Parkstad characters; on the other hand this theoretical framework will necessarily converge on methodological design proposals in Parkstad area.

For each issue (i.e.: Regenerating Landscape; Implementing urban Intensity; Energy Transition; Clever Heritage; Reconversion & Demolition) two research units will cooperate on defining a general framework of research and then they will take care individually with one area or one proposal. To achieve innovative results we recommend to form interdisciplinary research units and to focus on relevant original policies that can intersect the attention of EU commission.

Methodological projects (or meta design), developed within the International Studio and in mid term contribution, shall test the IBA Method based on:

- Integrated approach for spatial design_ between top down/bottom up policies; involving economical forces and social cohesion;
- Transnational_ going beyond territorial borders in order to look common characters for cross border regions;
- Mutations_ investigating shrinking dynamics as opportunity for flexibility, reuse, reconfiguration, differentiation in spatial design;
- Reconciliations_ looking at the European territory as stratified palimpsest in which key actions of mending or intersection can help interrupted narratives;
- Sustainable development_ fostering sustainable development towards the Program Horizon 2020 and the Urban Agenda on EU level.



TEST CASES

Five general topics related to IBA Parkstad issues, as in the Flywheel scheme, have been common guidelines for developing innovative design strategies and policies on four selected areas:

1. The north gateway of Schinveld

Airport on the German border

related to the necessity of implementing transnational relations in infrastructural accessibility, approached by the research group of Politecnico di Milano;

2. The Roman Quarter in Heerlen city centre

in which becomes evident the necessity of a dialogue with the physical and mental traces of a transnational shared territorial Roman history, approached by two students groups of IUAV Venice and Hasselt University;

3. The north/south axis between Aachen and Heerlen

retracing common identities and landscape unity beyond national borders, approached by the students group of RWTH Aachen University;

4. The Bekkerveld District in Heerlen south

seen as innovative educational hub looking for revitalizing actions and models for contemporary urban areas, approached by the research group of University La Sapienza of Rome.



The selected case studies are part of the ongoing candidate or attention projects for IBA Parkstad, that will be developed and presented as some of the pilot interventions for the final exhibition in 2020. The task, for each university group, was to address not only specific design strategy, but also possible processes and/ or policies for transformation. At the end, all the research groups approached the case studies, even from different perspectives, on a larger scale strategically engaged within a more general framework. In this vision was also important that the groups envisioned the possible actions that could be taken in order to revitalize the region by means of reconciling its fragmented land-cityscape. A revitalization for Parkstad area that could enlighten its potential by disclosing the richness and complexity of its territorial palimpsest, physically such as mentally. By engaging a larger public - citizens, institutions, lobbies - it is possible to foster the future of this area while enforcing its spatial values. After these three weeks of knowledge and research methods' exchange, a solid network was set up. Each academy showed, in the final results of the Venice experience, a clear approach and a specific lens of observation about Parkstad urban area as a borderless region. An important moment to support the IBA Parkstad process and a promising start for forthcoming cooperation.

1. The north gateway of Schinveld Airport on the German border

(Project no.7.42 - ZONE 7: From Schimmert to Schinveld)



DESCRIPTION

The northern border between Parkstad and Germany is characterized by the presence of a gliding airport and industrial areas, immersed in a green landscape where also the Roman past is evident through an ancient bridgehead crossing the national borders.

TASK

IBA Parkstad started a family of portal projects to define the boundary of the urban area. One of them is the north gateway of Parkstad Onderbanken. This project focusses on art, craftsmanship and archaeology. It wants to build an identification point of Parkstad at Schinveld and also it wants to make the particular transnational area more attractive and accessible for residents and tourists. One subproject is the "Etzenrader Huisken" which was formerly part of a medieval castle. Many Celtic and Roman relics are found in its direct surroundings. The past is made visible and usable with a large sculpture garden of contemporary art. A new bridge over a regional road empowers also the connection between the fusing municipalities Schinnen and Onderbanken. Steel Construction Schinveld on the other side of the bridge is a potential spot as a place to stay and other leisure facilities. A Gliding Association nearby is looking for sustainable design solutions and a vision for its desolate-looking gliding airport, restaurant and cross-border recreational trail connections with Gangelt.

(Related Topics: REUSE; RECYCLE; RECONVERSION & DEMOLITION; ENERGY TRANSITION)

2. The Roman Quarter in Heerlen city centre

(Project no.1.2 - ZONE 1: Parkstad Centre)



DESCRIPTION

The Roman past gets a prominent place in the city. The Thermenmuseum contains the remnants of a gigantic Roman bathhouse that is 2500 m² in size and is being renovated. The old library at the Raadhuisplein (Town Hall Square) may be converted into an archaeological deposit. Together, the projects form a Roman quarter on the south side of the city centre.

About 15 B.C. the Romans founded the urban settlement Coriovallum in the valley now known as the Heerlen Basin. The settlement was situated on the small strip of land between the Caumerbeek and the lower situated Geleenbeek, at the place where two Roman military roads intersected with each other at the current centre. With regard to the centre position in the current Eastern Mining District there appears to be a parallel between the Roman and the modern time. The most spectacular remnant of Coriovallum and together with the mining history a unique selling point of Heerlen, is the large Roman bathhouse, which was situated close to the abovementioned intersection of main roads. The Roman past represents an important phase in the history of Heerlen, which according to the latest insights, expressed by Karen Jeneson of the Thermenmuseum, was not only older but considerably bigger than Roman Maastricht. In the above-ground city some silent witnesses remind of the Roman past. For example, the Caumerbeek and the recently partially reconstructed Geleenbeek represent the eastern- and western border of Coriovallum. Also the route of Valkenburgerweg almost fully coincides with that of Via Belgica,

whereas Honigmannstraat and the southern part of Bekkerweg almost match with the military road from Xanten to Aachen.

TASK

As a result of abovementioned first observations some recommendations can be formulated. Among other things these intend to create a connection between making the Roman past more explicitly perceivable in the public space and an upgrading of the Thermenmuseum.

1. It should be investigated to what extent it would be possible to create a tangible relation between the bathhouse and Roman remnants in the immediate vicinity.
2. Future visualisations of Roman heritage in the vicinity of the bathhouse should be instrumental in the experience of archaeology and not to be perceived as art in the public space.
3. The presentation of the Roman bathhouse in a relevant spatial context requires the enclosing structure to get a clear degree of transparency, in which optically the inside and the outside partly run into each other. The desired transparency and better effluvia require a radical adaptation of the Thermenmuseum.
4. It would be positive if the, spatially and visual quality-wise, problematic area between the former technical school on the Burgemeester de Hesselleplein and the western part of Coriovallumstraat would fulfil a function in the strive for making the Roman past more tangible.

(Extract from IBA MANUAL SUMMER 2015; Related Topics: IMPLEMENTING URBAN INTENSITY; CLEVER HERITAGE)

3. The north/south axis between Aachen and Heerlen

(Project no.6.38 - ZONE 6: Land of Lime & Stream Valley)



DESCRIPTION

The western surrounding is formed by the rural municipalities of Parkstad: Onderbanken, Schinnen, Nuth, Voerendaal and Simpelveld. A characteristic of the western surrounding is that until shortly, the landscape was guiding for the development of this region. The characteristic heritage embedded in the landscape is a (silent) witness thereof. The quality of the western surrounding lies in the fact that the area has grown organically and is built up of entities which can still be recognized.

In Roman times, the western, southern and northern flank were dominated by the villa culture: farms were focussing mainly on the production of grain, of which the amounts by far exceeded their own demand. The surplus was needed for the inhabitants of urban centres in the area and for the legions. The western surrounding counted several villas like this, which flourished between the late 1st century and the third quarter of the 3rd century A.D. The important military road from Cologne to Boulogne-sur-Mer, which has the modern name of Via Belgica ran through this area.

In the public space of the western surrounding there are some information panels and visualizations which refer the Roman history of the area. Likewise, a visualization has been realised some years ago at Diepestraat in Arensgenhout, which is dedicated to the Roman villa landscape and more specifically to Villa Steenland. In the past, with regard to another large and fully excavated villa, namely the villa Voerendaal-Ten Hove, the intention was expressed to assign this as a central location and an archaeological landscape park.

Earlier, in 1986 at the children's farm of Vaesrade, an animal pen was introduced that reflects the villa rustica that was excavated there. The Roman traces that were found have such a high quality and are so connected with the specific landscape of western surrounding, that it is suggested to not only make the Roman villa-culture visible and open for experience in the museum, but also in the public space. This does not only apply to the main building of a villa, but especially to the entire villa complex, including the main building, annexes and other facilities as well as their strictly organized locations in the landscape. If this trump card of western surrounding is played, it is important that the method which is chosen to make the villa-culture

visible and open for experience, serves archaeology, and that visitors can connect with results from an archaeological interest.

TASK

In order to transfer knowledge in a special visible form and because of cultural touristic considerations, it would be positive if the Roman villa culture could be made visible and open to experience at the archaeological excavation site. As a villa had various annexes, each with its own purpose, and as this whole was embedded in the landscape according to a formalized order, the process of making the villa visible and perceptible should be focused on the entire villa complex. The method used during this process should be aligned to its purpose: making archaeology visible and open for experience.

Each municipality has its own heritage policy which mainly focuses on the maintaining of the status-quo. Active, cross-municipality policies focussing on the repair of the status quo ante, on strengthening the historical context and also on the future reallocation provide new possibilities which may lead to the desired and necessary integral vision and approach. The coherence between the various buildings of a domain/estate and the landscape has disappeared or has been disturbed into a more or lesser extent. A renewed experience of the domains can add an extra quality to the Western Surrounding. Important in this respect is that the domains are partly situated across the border. First positive steps in this direction are natural developments such as Corio Glana (meandering Geleenbeek) and the Roode Beek project.

Material goods (objects of art, furniture etc.) as well as immaterial goods (citizens' militia etc.) that form part of the heritage are still present to support the entire context. It is important that this heritage is also preserved for the future of the region.

(Extract from IBA MANUAL SUMMER 2015; Related Topics: REGENERATING LANDSCAPE; CLEVER HERITAGE)

4. The Bekkerveld District in Heerlen south

(Project no.4.24 - ZONE 4: Middle City)



DESCRIPTION

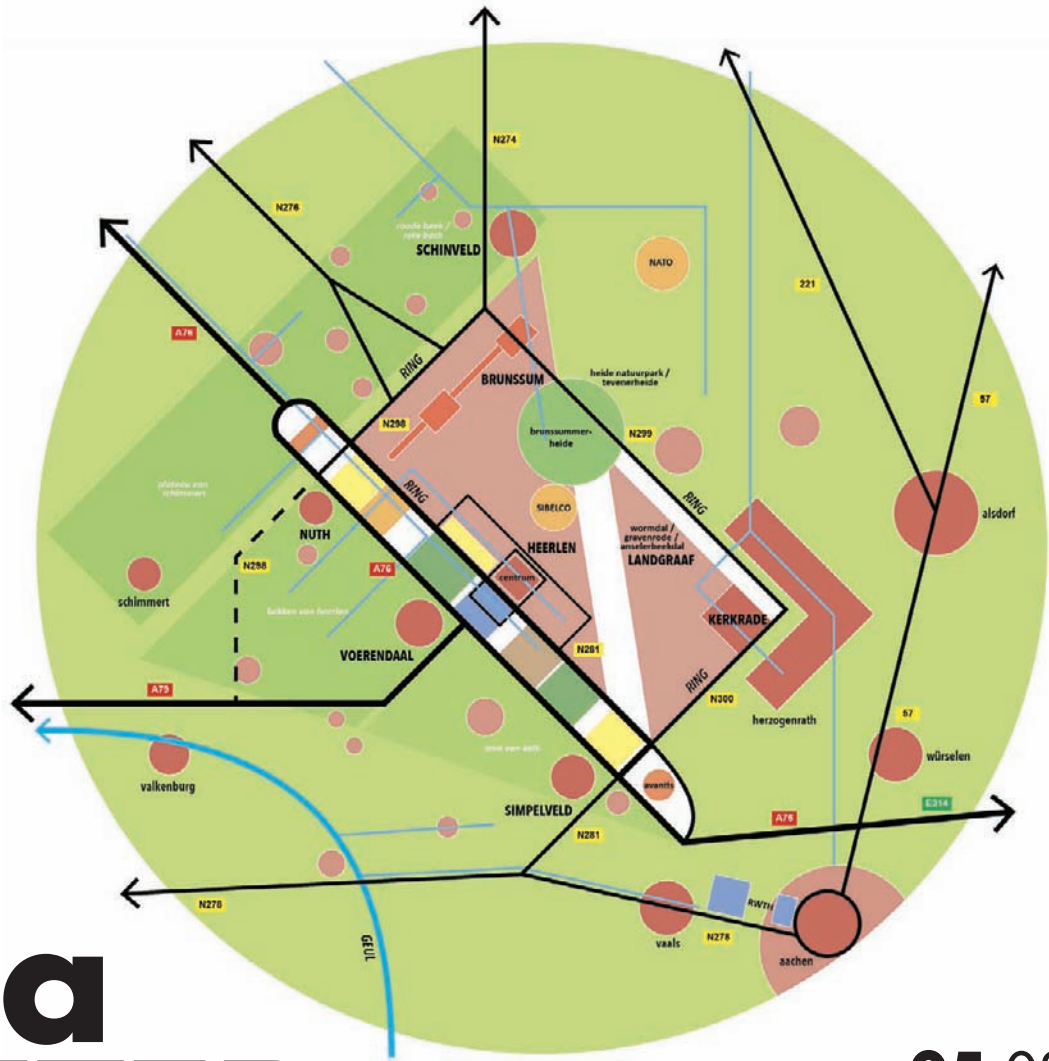
Bekkerveld is an urban district located in the south of Heerlen. In this area many educational institutions are located as well as vacant buildings. The aim for this area is to become an educational district 2.0 and in that sense also to enforce the urban environment as campus for education.

TASK

The project consists of three parts.

1. In 1953 the local parish commissioned architect Frits Peutz for the characteristic Annakerk (St. Anne's Church). Today, the church membership is declining in this region. The goal of this part is preservation of cultural heritage through development. At this inspirational place elementary school Tarcisius and high school Thermen near Bekkerveld want to organise a partly shared educational programme and events. The idea is to make a flexible fit-out system which easily can be removed after use. The church council and diocese work out a business plan for this educational project, and a multipurpose chapel annex community centre.
2. The second part contains the former HTS (technical college) at the north of Bekkerveld. This building is the largest building in the region build from Kunradersteen (a regional Lime Stone). Architect J. Seelen has been commissioned for this building as the Nieuwe Mijnschool (New Mining School) in 1922. The HTS is partly vacant and the owner wants to convert the building into housing.
3. The third part is the sustainable reconversion of the nearby Bernadine chapel. Originally used as chapel for the adjacent high school. The former Franciscan monastery church (1932) from architect Jos Wielders in modern-expressionist style is a landmark at the old connection to Aachen, the Akerstraat.

(Extract from DEVELOPMENT PROGRAM; Related Topics: IMPLEMENTING URBAN INTENSITY)



iba INTERNATIONAL NATIONAL STUDIO

REVITALISATION BY RECONCILIATION

DESIGN STRATEGIES FOR CROSS BORDER REGIONS

**05.08
19.22
SEPTEMBER
2016**

DELFT
BK_FACULTY OF
ARCHITECTURE
&
VENICE
UNIVERSITÀ IUAV
DI VENEZIA

PARTEICIPANT ACADEMIES

I - Università Iuav di Venezia
- - U
- - A
- - V



.....

iba INTERNATIONAL STUDIO is part of the activities related to the exhibition **REVITALISATION BY RECONCILIATION**.

The exhibition is an official Collateral Event present at the **Biennale of Architecture Venice 2016 REPORTING FROM THE FRONT**, hosted at the Querini Stampalia Foundation and promoted by **IBA Parkstad**, **Noord Holland Coastal Development** and **Euregio Meuse-Rhine**. The STUDIO constitutes an experimental partnership initiative between **European Academies** to support new methodologies and tools for spatial and urban design within the Internationale Bauausstellung (IBA) context. The aim is to establish a common dialogue and a shared platform of knowledge, presenting its results to the attention of the European Authorities.

The results of the iba INTERNATIONAL STUDIO will be exhibited during the **IBA@Opendays** in Brussels for the **European Week of Cities and Regions**.

.....

iba INTER NATIONAL STUDIO PROGRAM

1st WEEK

05-08 SEPTEMBER
IUAV_AULA 0.5 c/o Magazzino 6,
VENICE

05.09 AM_10.00 AM
**OPENING INTERNATIONAL
STUDIO**

IBA International Studio
Fabrizia BERLINGIERI
IBA Parkstad and case study
Manon VAN DER LINDEN; Thomas BERGSTRA
Roundtable Academies
Scientific responsible, coordinators, tutors
and PhD candidates/students
Presentation of research materials
Manon VAN DER LINDEN; Thomas BERGSTRA

05.09 PM_ 4.00 PM
Visit to the exhibition
**REVITALISATION BY
RECONCILIATION**

**IBA PARKSTAD STRATEGIES FOR
CROSS BORDER TERRITORIES**
Fondazione Querini Stampalia

06-07.09_ AM/PM
WORKSHOP ACTIVITIES
Staff IBA: Manon VAN DER LINDEN;
Thomas BERGSTRA; Fabrizia BERLINGIERI

08.09_12:00 AM
ROUNDTABLE DISCUSSION
Staff IBA: Manon VAN DER LINDEN;
Thomas BERGSTRA; Fabrizia BERLINGIERI
Coordinators of Participant Academies



1st WEEK

05-08 SEPTEMBER
BK Faculty of Architecture_Room 02
oost 400, DELFT

05.09 AM_1.30 PM
**OPENING INTERNATIONAL
STUDIO**

IBA International Studio
Lidy MEIJERS
IBA Parkstad and case study
Roel MEERTENS
Roundtable Academies
Scientific responsible, coordinators, tutors
and PhD candidates/students
Presentation of research materials
Roel MEERTENS; Iva KÖNIG; Lidy MEIJERS

06-07.09_ AM/PM
WORKSHOP ACTIVITIES
Staff IBA: Roel MEERTENS; Iva KÖNIG; Lidy
MEIJERS

06.09 PM_ 4.00 PM
Lecture
INTECTURE/IBA
Thijs ASSELBERGS, Annebregje SNIJEDERS
BK Faculty of Architecture, room 02 oost 400

08.09_12.00 AM
ROUNDTABLE DISCUSSION
Staff IBA: Jo COENEN, Roel MEERTENS
Coordinators of Participant Academies

2nd WEEK

19-22 SEPTEMBER
IUAV_ M1 Cotonificio, VENICE

19.09_10.00 AM
**THE EU URBAN AGENDA
CONTEXT**
Yvette MASSON ZANUSSI
AULA IUAV M1 Cotonificio
Roundtable Academies

19.09_4.00 PM
Lecture
**CARLO SCARPA AND
THE PALAZZO QUERINI
STAMPALIA**
Guido ZUCCONI
AULA IUAV M1 Cotonificio

20-21.09_10.00 AM
WORKSHOP ACTIVITIES
Staff IBA: Jo COENEN; Fabrizia BERLINGIERI

20_4.00 PM
Visit to the exhibition
**REVITALISATION BY
RECONCILIATION**
**IBA PARKSTAD STRATEGIES FOR
CROSS BORDER TERRITORIES**
Fondazione Querini Stampalia

21.09_4.00 PM
**RESEARCH TRAJECTORIES FOR
CROSS BORDER REGIONS**
Dialogue between academies
AULA IUAV M1 Cotonificio

22.09_12.00 AM
**RESULTS PRESENTATION AND
ROUNDTABLE**
Jo COENEN, Scientific Responsible;
Coordinators; Research units; Experts

SCIENTIFIC COMMITTEE & STUDIO COORDINATION

Jo COENEN, IBA Parkstad curator,
Fabrizia BERLINGIERI, Assistant curator
EUROPEAN EXPERTS

Yvette Masson ZANUSSI,
Marco STATHOPOULOS

IBA ACADEMY

Rob DOCTER,
Antoinette STÖCKER

International Academies-Research Unit Responsibles:

Thijs ASSELBERG; Roberto CAVALLO;
Lidy MEIJERS (TU Delft)
Jos BOSMAN (TU Eindhoven)
Peter BOENGAERTS; Nick CEULEMANS
(University of Hasselt)
Wim VAN DEN BERGH;
Carolin STAPENHORST (RWTH);
Ilaria VALENTE, Marco BOVATI (POLIMI)
Alberto FERLENGA; Enrico FONTANARI;
Armando DAL FABBRO; Mauro MARZO
(IUAV)
Domizia MANDOLESI, Alessandra DE
CESARIS (La Sapienza)

SUPPORT TEAM

Fabrizia BERLINGIERI
Niek BISSCHEROUX
Jules BECKERS
Thomas BERGSTRA
Iva KÖNIG
Roel MEERTENS
Lidy MEIJERS
Manon VAN DER LINDEN

PARTECIPANT ACADEMIES

TU Delft Technical University
DEPARTMENT OF ARCHITECTURE AND
ENGINEERING + TECHNOLOGY_ Thijs
ASSELBERGS, Annebregje SNIJEDERS;
DEPARTMENT OF HERITAGE &
ARCHITECTURE_ Lidy MEIJERS;
DEPARTMENT OF ARCHITECTURE_
Roberto CAVALLO;

TU Eindhoven Technical University
DEPARTMENT OF THE BUILT
ENVIRONMENT_ Jos BOSMAN;

**ZUYD UNIVERSITY OF APPLIED
SCIENCES MAASTRICHT**
DEPARTMENT OF ARCHITECTURE_ Jos
BOSMAN; Manon DEIJKERS;

Università IUAV di Venezia
DIPARTIMENTO DI CULTURE DEL
PROGETTO_ Mauro MARZO; Claudia
PIRINA;

DIPARTIMENTO DI PROGETTAZIONE
E PIANIFICAZIONE IN AMBIENTI
COMPLESSI_ Ruben BAIOCOCCO;
Pietro FERRARA
DIPARTIMENTO DI ARCHITETTURA PER
IL NUOVO E L'ANTICO_ Armando DAL
FABBRO;

POLIMI Politecnico di Milano
DIPARTIMENTO DI ARCHITETTURA E
STUDI URBANI_ Iliaria VALENTE; Marco
BOVATI; Emilia CORRADI;

UNIVERSITA' LA SAPIENZA Roma
DIPARTIMENTO DI ARCHITETTURA E
PROGETTO/HOUSING LAB_
Domizia MANDOLESI; Alessandra DE
CESARIS; Luigi PAGLIALUNGA

RWTH Aachen
DEPARTMENT OF HOUSING AND
DESIGN_ Wim van den BERGH; Carolin
STAPENHORST;

HASSELLT UNIVERSITY
ARCHITECTUUR EN KUNST_ Peter
BONGAERTS, Nick CEULEMANS; Marijn
VAN DE WEIJER;



REGENERATING BEKKERVELD DISTRICT PARKSTAD



SAPIENZA
UNIVERSITÀ DI ROMA

HOUSING LAB/ DIPARTIMENTO DI ARCHITETTURA E PROGETTO

The research group is part of HousingLab, a vivid research hub of DIAP- La Sapienza that focuses on urban transformations related to social and habitat in contemporary deep changes. In particular, it addresses the issues of urban regeneration, housing and typological innovation, focusing both on Rome and international areas. Main research themes are the transformation and urban regeneration, with focus on strategies for the peripheral areas and social housing neighborhoods; experimental architectural typologies for sustainable housing; new models of collective housing; solutions for housing in crisis areas.

HousingLab provides services for public institutions, business people, designers, academic and students. The research group also takes part of the National Research PRIN Recycle Italy as unit research of Rome.

Keywords: Urban regeneration strategies: rehabilitation of public housing neighborhoods; integration between residential building, transport systems and service networks; co-housing.

RESEARCH UNIT

*Domizia MANDOLESI scientific coordinator
Luigi PAGLIALUNGA teaching staff*

*Chiara ROMA, Alessia GUERRIERI, Teodora M. M. PICCINNO,
Michele MILOCCO, Massimiliano MODENA participant PhD
students and researchers*

REGENERATING BEKKERVELD DISTRICT, PARKSTAD

Issues and New Potentiality of Bekkerveld District

The analysis of Bekkerveld district's current state highlights how the area lacks a defined urban identity, both in relation to the city of Heerlen, and to the wider context of Parkstad. This situation is connected to the following issues:

- a single-function, undifferentiated urban texture, mostly consisting of single-family residences and schools;
- lack of proximity due to extensive roads and empty spaces, a layout unfavourable to the meeting and exchange between people;
- lack of elements of architectonic identity and of places that might bring together the community.

Seeing as the area also has several schools and empty buildings in need of re-purposing, these issues suggest education as one of the important themes for the district's revival in a European context, as well as the one of the entire Parkstad region.

The Renewal Proposal

Taking into account the strategic position of the Parkstad region, and particularly of the city of Heerlen, between Belgium and Germany, the proposal aims to strengthen the already existing poles and develop them in a systemic way, connecting them to other points of urban interest and creating a new relevant centre. The activation of this process will be possible thanks to the enhancement of some urban axes; ideally this will happen through succeeding stages and with the citizens' involvement. These axes will re-establish a connection between the different urban sectors; they will give new meaning to the structure of public space, and to the relationship between the two different dimensions of private housing and public neighbourhood. This will also entail the identification and development of existing nodes of social gathering, such as theatres, museums, and schools. Specifically, the practical aims pursued will be the following.

1. Transnational scale

- finding a strategic function able to focus the interests of various EU Countries;
- re-activating tourism through the strengthening and development as a system of pre-existing resources on the environment, landscape and archaeology levels.

2. Local scale

- creating a new centre and strengthen the network between the various districts in Heerlen;

- improving the offer of educational and sporting services;
- inserting the existing school buildings in a network of education services spread throughout the city, and also open to the external community;
- re-purposing and re-configuring the existing but abandoned buildings (churches and schools) and the widest empty lots;
- integrating different features – culture, archaeology, education, sports, environment, leisure – through new thematic juxtapositions.

Bekkerveld Educational and Lifelong Learning Hub

Specifically, the proposal suggests to build a HUB in Bekkerveld district, a centre for learning and for experimenting innovative education methods that encompass all levels of schooling up until the access to the workforce, open to all members of the EU. In the context of the EU, education plays a central role in spreading concerted policies and choices. The Educational and Lifelong Learning Hub (ELLH) aims to further the work of online platform Twinning by supplying the EU with a physical space where teachers and students from all over Europe can meet and exchange views. The objectives are:

- creating educational projects between EU partners;
- exchanging and comparing experiences and ideas;
- collaborating and experimenting together in order to acquire new learning methods and to improve the quality of education;
- focusing, at all levels of education, on hands-on learning methods based on experiments-driven and participated knowledge;
- readying youths to join society by improving their access to job opportunities, and facilitating training and employment through transnational partnerships and networks.

One of the ELLH's key strengths would be its potential in drawing teachers and students from 6 to 18 years old for short learning periods. Ailing from all EU Countries, they would attend refresher courses, traineeships, and workshops. The ELLH would also serve as testing grounds for cutting-edge learning methods.

From an architectonic point of view, the HUB project is structured as a big mall, an open space with a flexible layout that allows for diversified spatial configurations, suitable for various teaching practices. The aim is to establish creative ateliers where laboratory activities stimulate active research. Ateliers are spaces focusing on educational play; they transform students into protagonists through hands-on and experiment-driven learning.

Effects And Prospective Sponsors

The creation of the ELLH in the Bekkerveld district has the potential to draw people from all over Europe, with positive consequences for tourism. This could re-activate interest in the entire region of Parkstad, particularly for its historical, archaeological and environmental heritage, characterized by the presence of the quarries.

Main sponsors could be:

- The EU, in order to launch the ELLH project;
- the local schools, in order to improve the education they offer;
- private enterprises interested in building new urban services, sporting and tourism facilities, and new residences in order to meet a renewed demand.

The Project

The project comprises three main elements.

1. The HUB

facing the plaza, is the new heart of Bekkerveld. The plaza itself can also be used for public events such as fairs, concerts, etc. The HUB reassembles the pre-existing and disused St. Anne's Church, school and building under a wide flat covering, equipped with solar panels for internal energy production. These buildings, integrated with new spaces, shape the big structure dedicated to education.

2. The system

of pre-existing schools and cultural buildings is transformed and integrated with sporting routes and new related facilities. This system creates a wide and diversified offer of urban functions, especially geared towards the younger generations.

3. The re-organization

of some pre-existing road axes creates a new network of roads and thematic pedestrian routes

– encompassing history and archaeology, arts and culture, sports and energy – that link the main centres of Heerlen. This generates opportunities to promote local resources and to strengthen tourism. This urban network is developed according to social and environmental sustainability, in order to trigger the reactivation of public spaces.

Specifically the three urban axes imagined as regenerative and recognizable routes. These routes define new public spaces, devised as meeting places and visitor centres.

The proposal identifies two routes that follow the North-South axis: "ART & CULTURE" and "HERITAGE". Both are urban "activators" that guarantee an immediate link between the new education centre and Heerlem's historic centre, with its ancient Roman layout. A third route, "SPORTS & ENERGY", crosses transversally the other two.

A new sustainable transport line will follow the culture axis. It will guarantee a fast link between Heerlen's train station and the technological HUB, passing through the historic centre. The line has the potential for a future expansion towards the northern suburbs.

The infrastructure – a cable car line on pylons, with detachable chairlifts – will allow an unusual "aerial" view of the city and the surrounding area.

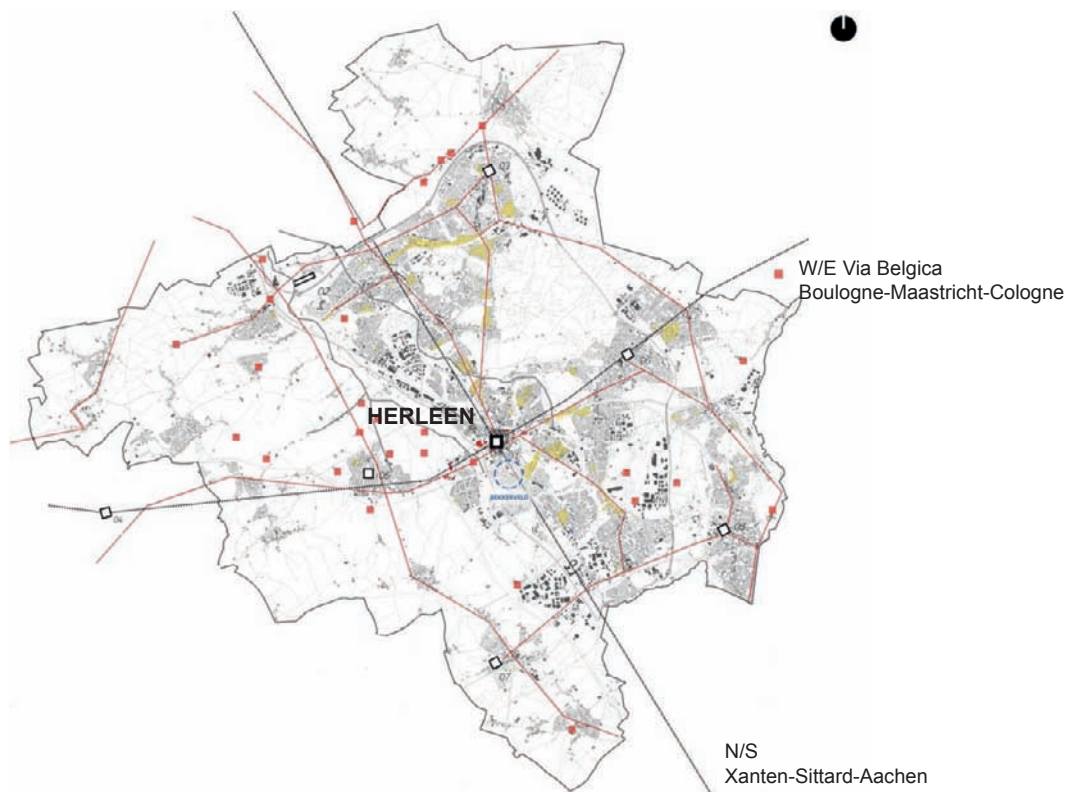
The sports and energy axis aims to boost sporting activity all year round. It links and promotes two urban parks at the margins of the same neighbourhood: Welten Kommert park (near the highway) and Aambos park (to the North-East). The route will juxtapose sporting facilities and scientific or educational installations.

Two other green areas along the route will be repurposed for sporting (volleyball, basketball, tennis, table-tennis) and leisure (public chess boards, children's playgrounds). These facilities will alternate with installations and urban systems dedicated to energy production from sustainable sources (micro-scale wind turbines).

ANALYSIS

PARKSTAD

Historical places of interest and main connections



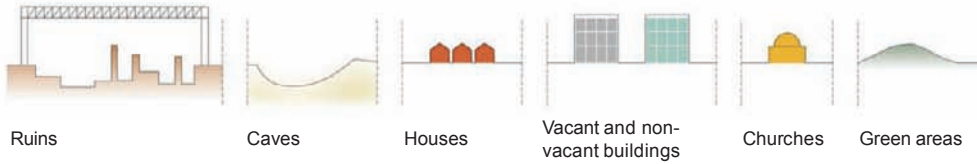
ISSUES

- **SINGLE-FUNCTIONALITY**
undifferentiated urban fabric
- **LACK OF PROXIMITY**
absence of an urban character due to large roads and public spaces
- **LACK OF ELEMENTS OF ARCHITECTONIC IDENTITY**
lack poles of attraction
- **ABSENCE OF PLACES FOR MEETING AND SOCIALIZING**

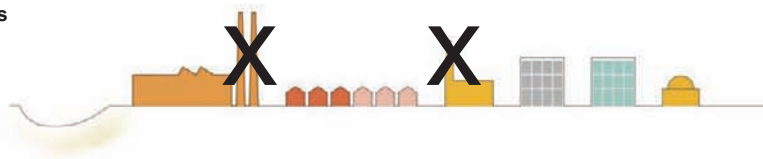
ISSUES

HEERLEN

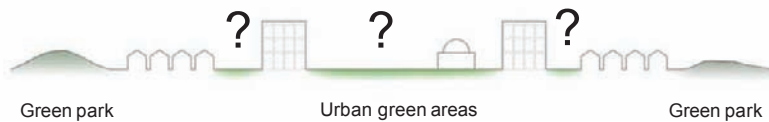
Disconnected system



Loss of icons



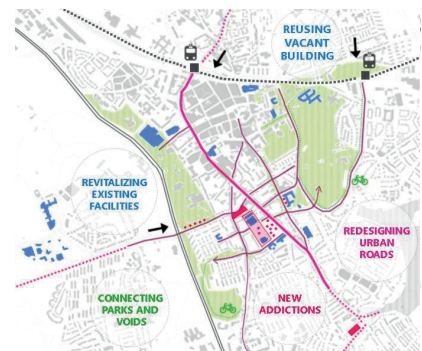
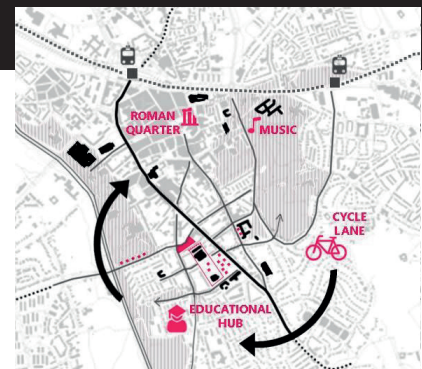
Uniformity of public spaces



MAIN GOALS

LOCAL SCALE

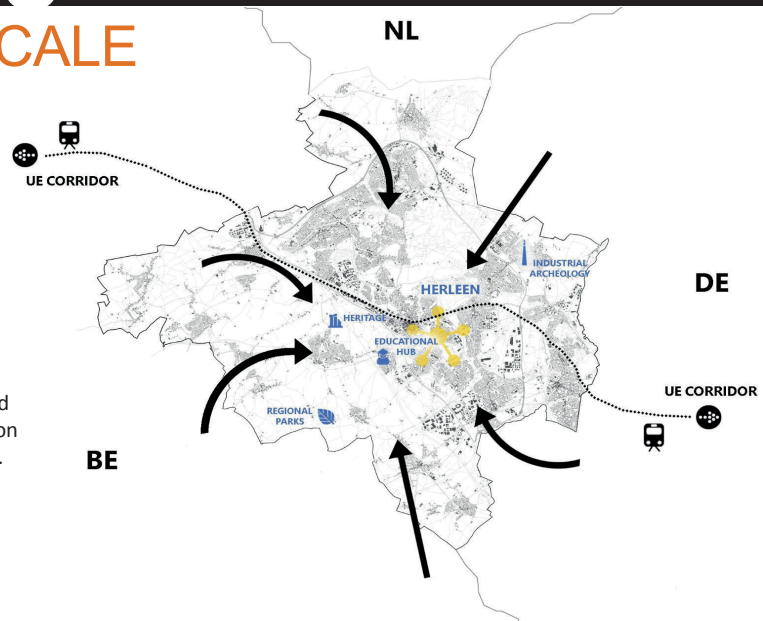
- Creating a new centre and strengthen the network between the various districts in Heerlen.
- Integrating different features – culture, archaeology, education, sports, environment, leisure – through new thematic juxtapositions.
- Improving the offer of educational and sporting services;
- Inserting the existing school buildings in a network of education services spread throughout the city, and also open to the external community;
- Re-purposing and re-configuring existing but abandoned buildings (churches and schools) and urban voids in a urban system



MAIN GOALS

TRANSNATIONAL SCALE

- Finding a strategic function able to focus the interests of various EU Countries
- Re-activating tourism through the strengthening and development as a system of pre-existing resources on the environment, landscape and archaeology levels.



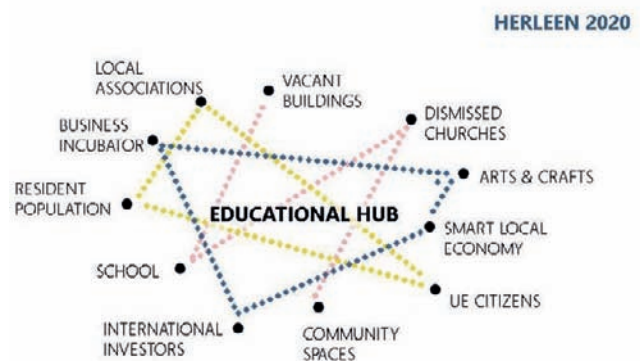
STRATEGY

EDUCATIONAL AND LIFELONG LEARNING HUB

Seeing as the area also has **several schools** and **empty buildings** in need of re-purposing, these issues suggest **education** as one of the important themes for the district's revival in a European context, as well as the one of the entire Parkstad region.

EDUCATIONAL HUB

Network of existing and new structures for learning and for experimenting innovative education methods that encompass all levels of schooling up until the access to the workforce, open to all members of the EU.



WHAT IS AN EDUCATIONAL HUB?

E.L.L.H.

ELLH

The **Educational and Lifelong Learning Hub** (ELLH) aims to further the work of online platform Twinning by supplying the EU with a physical space where teachers and students from all over Europe can meet and exchange views.

GOALS

- creating educational projects between EU partners;
- exchanging and comparing experiences and ideas;
- collaborating and experimenting together in order to acquire new learning methods and to improve the quality of education;
- focusing, at all levels of education, on hands-on learning methods based on experiments-driven and participated knowledge;
- readying youths to join society by improving their access to job opportunities, and facilitating training and employment through transnational partnerships and networks.

PROSPECTIVE SPONSORS

Main sponsors could be:

- The EU, in order to launch the ELLH project;
- the local schools, in order to improve the education they offer;
- private enterprises interested in building new urban services, sporting and tourism facilities, and new residences in order to meet a renewed demand.

MAIN GOALS

E.L.L.H.

CULTURAL POLES

EDUCATIONAL AND TRAINING
SPOTS/STATIONS

HUB

NEW EDUCATION AND
TRAINING POLES

JOB ENHANCEMENT WITH
ON-SITE WORKSHOPS

INTERNSHIPS AND WORKSHOP
FOR ANY KIND OF SCHOOL LEVEL
PRIMARY, SECONDARY AND SO ON

KINDS OF EDUCATION TO ENHANCE

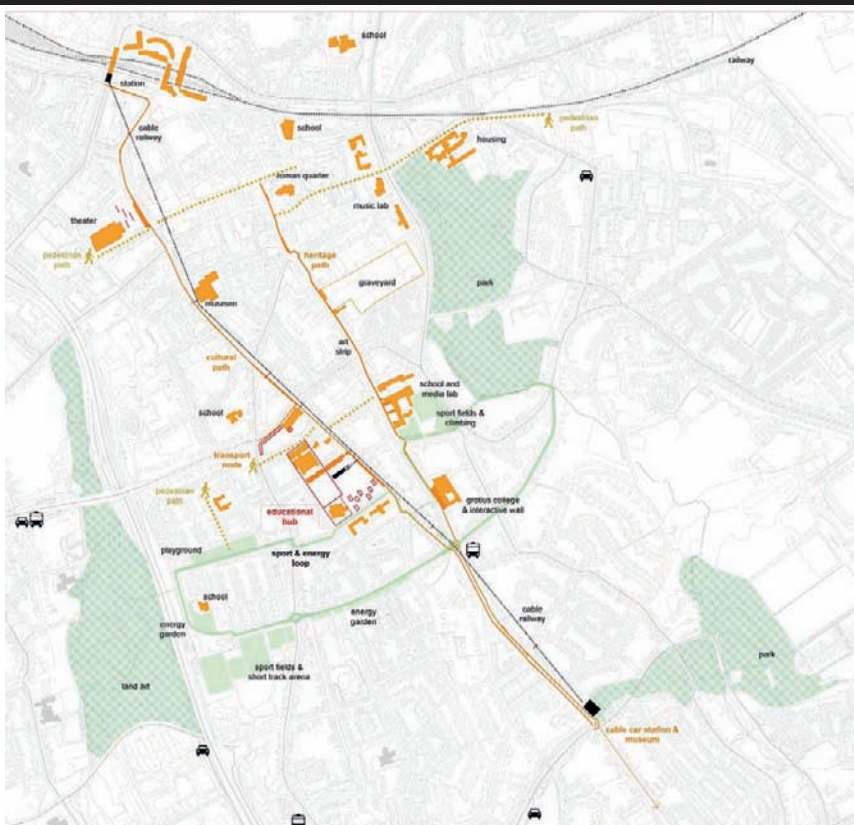
CONTINUING EDUCATION
FOR STUDENTS, TEACHERS, PROFESSIONALS AND
CITIZENS IN NEED OF NEW WORK SKILLS

PROPOSAL

BEKKERVELD AS AN EDUCATION - CULTURE – HERITAGE – SPORT NETWORK

- RE-ORGANIZING PRE-EXISTING ROADS CREATING A NEW NETWORK OF THEMATIC ROUTES
- STRUCTURING A SYSTEM OF PRE-EXISTING SCHOOLS AND CULTURAL BUILDINGS CREATING A WIDE AND DIVERSIFIED OFFER OF URBAN FUNCTIONS, ESPECIALLY GEARED TOWARDS THE YOUNGER GENERATIONS, GIVING STRENGTH TO THE ALREADY EXISTING POLES AND DEVELOP THEM IN A SYSTEMIC WAY
- IDENTIFYING THE EDUCATIONAL HUB AS THE STARTING POINT OF A BIGGER PROCESS OF URBAN TRANSFORMATION.

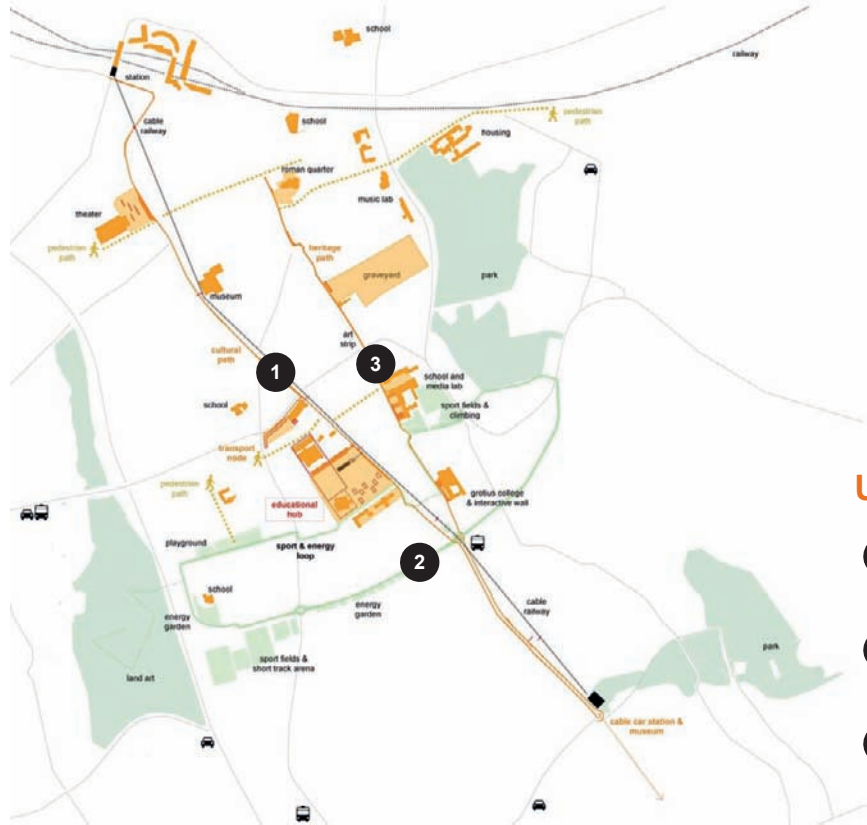
A NEW STRATEGY



- THEMATIC PATHS
- NETWORK OF URBAN CULTURAL ATTRACTIONS
- PUBLIC SPACE
- NEW LANDMARKS

URBAN NETWORK

Thematic pedestrian routes & pre-existing buildings

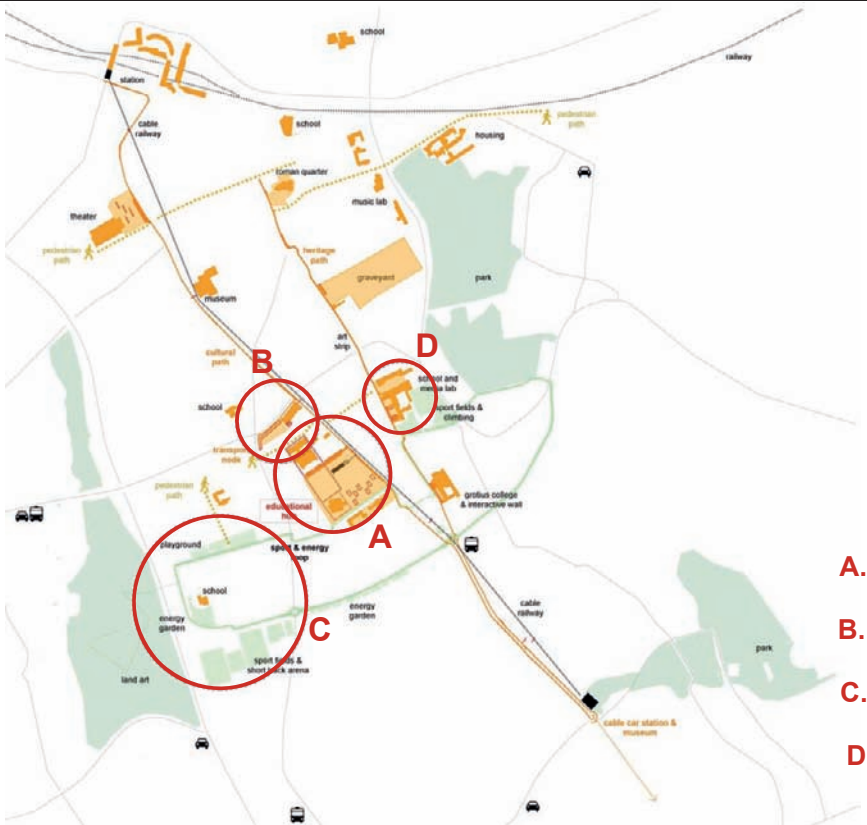


URBAN ACTIVATORS

- 1 CULTURAL PATH
- 2 SPORT & ENERGY LOOP
- 3 HERITAGE PATH

AREAS OF INTEREST

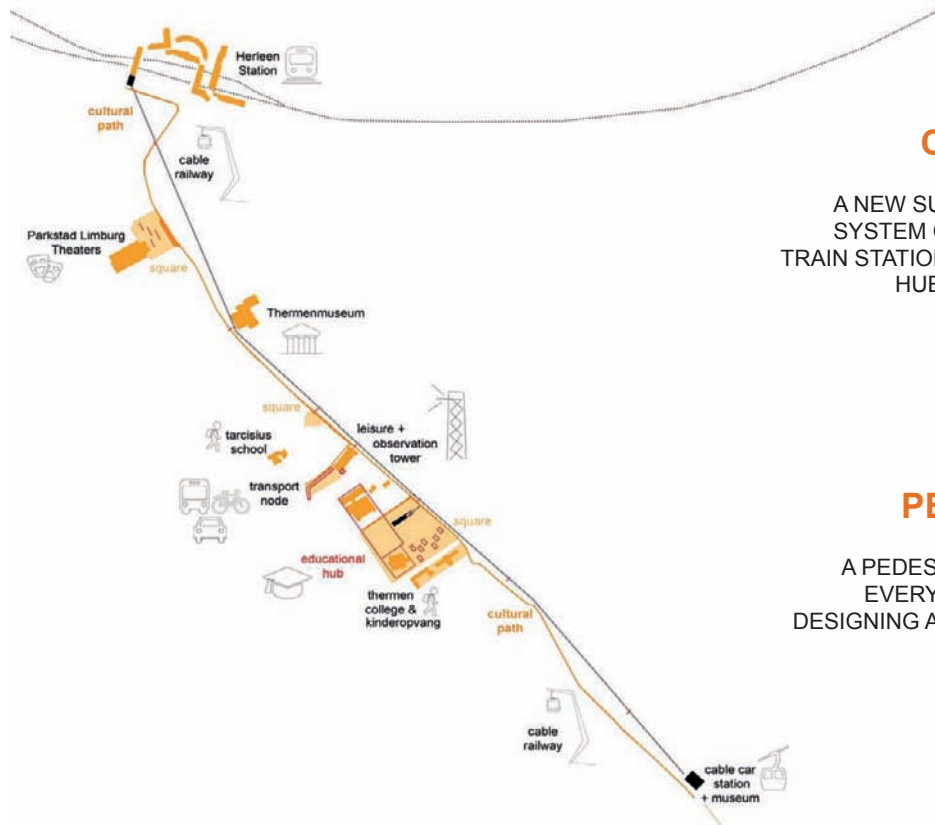
FOCUSES DESCRIPTION



- A. HUB
- B. TRANSPORT NODE
- C. SPORT & ENERGY PATH
- D. CHURCH

1 | CULTURAL PATH

station – theater – cable railway – transport node – educational hub

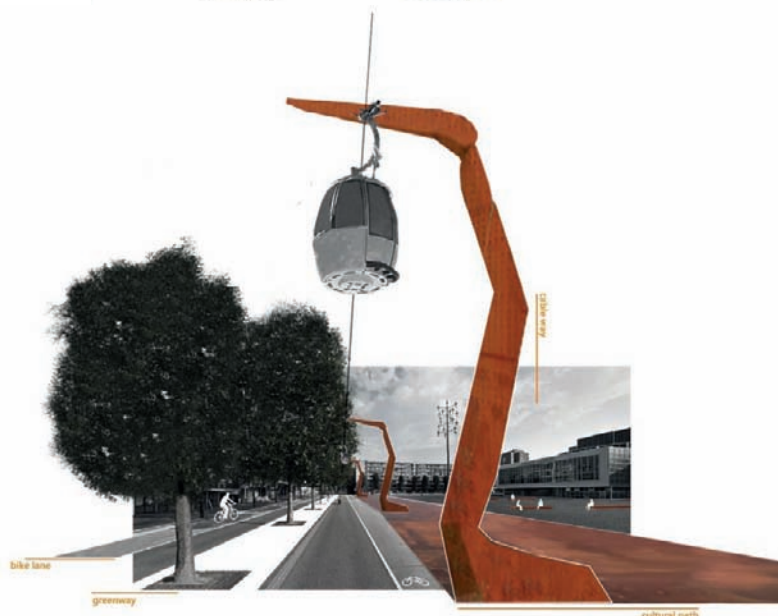
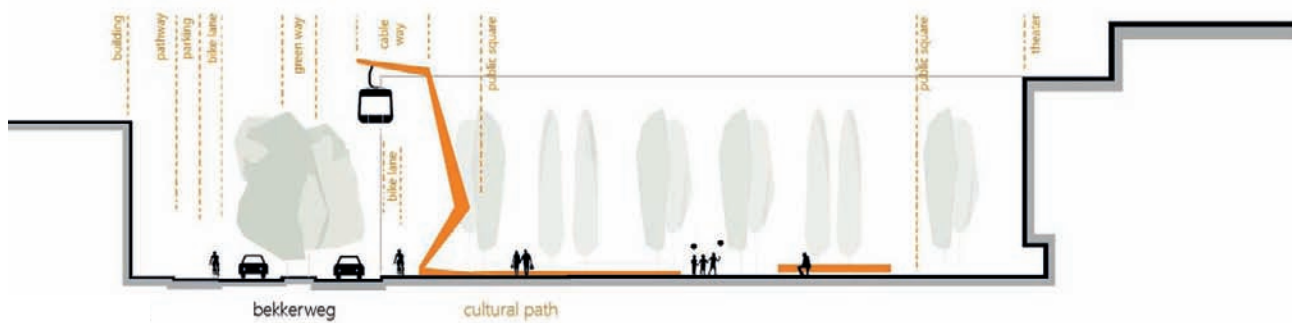


CABLE CAR LINE

A NEW SUSTAINABLE TRANSPORT SYSTEM CONNECTING HERLEEN'S TRAIN STATION AND THE EDUCATIONAL HUB ALLOWING A FAST LINK.

PEDESTRIAN LINE

A PEDESTRIAN ROUTE TOUCHING EVERY CULTURAL ATTRACTION DESIGNING A SLOW MOVEMENT PATH.

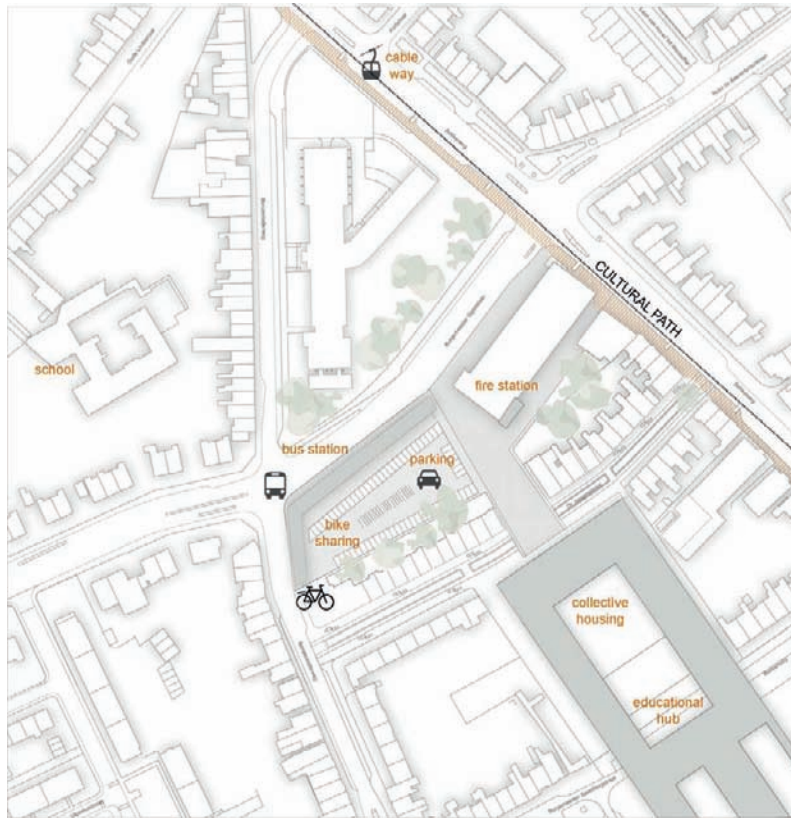


A new sustainable transport line will follow the culture axis. It will guarantee a fast link between Heerlen's train station and the technological HUB, passing through the historic centre. The line has the potential for a future expansion towards the northern suburbs.

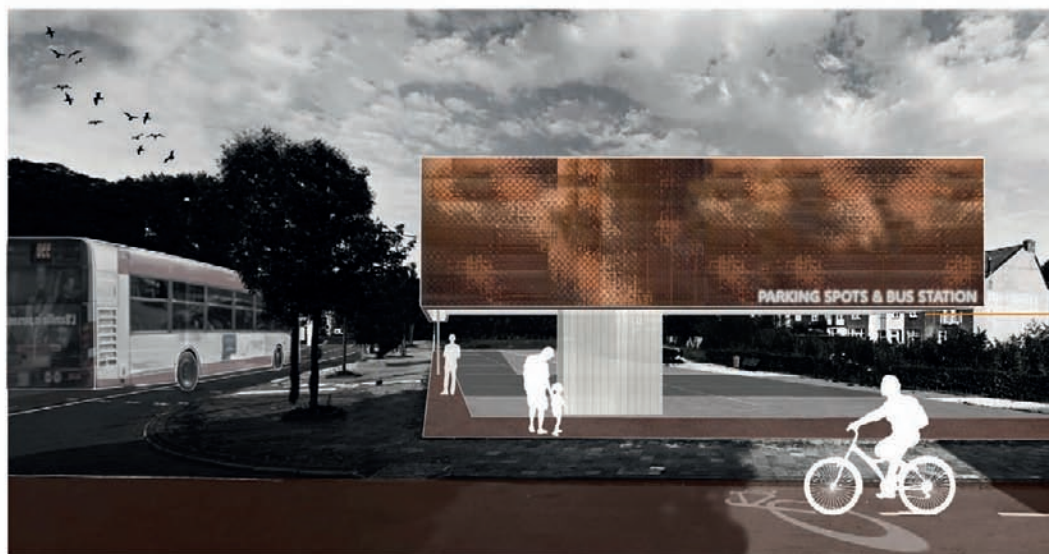
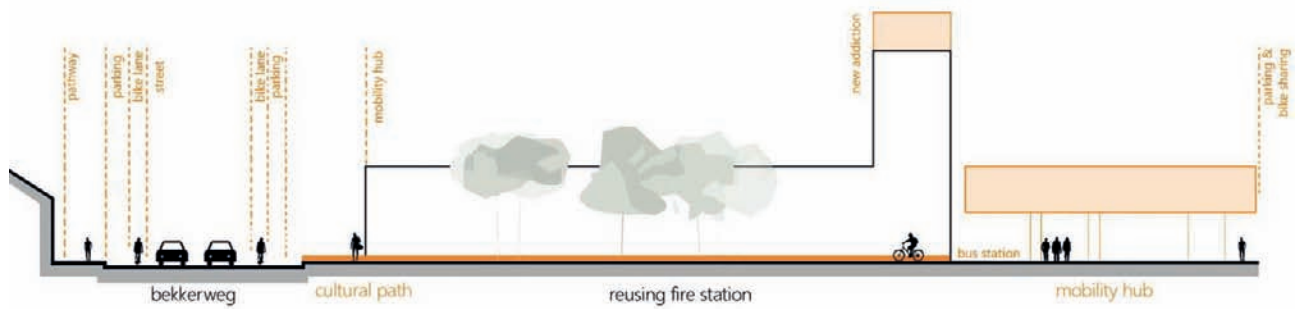
The infrastructure – a cable car line on pylons, with detachable chairlifts – will allow an unusual “aerial” view of the city and the surrounding area.

TRANSPORT NODE

E.L.L.H.



A NEW GATE TO HERLEEN
 connecting the educational hub
 with high speed roads, pedestrian
 paths, bike lanes.

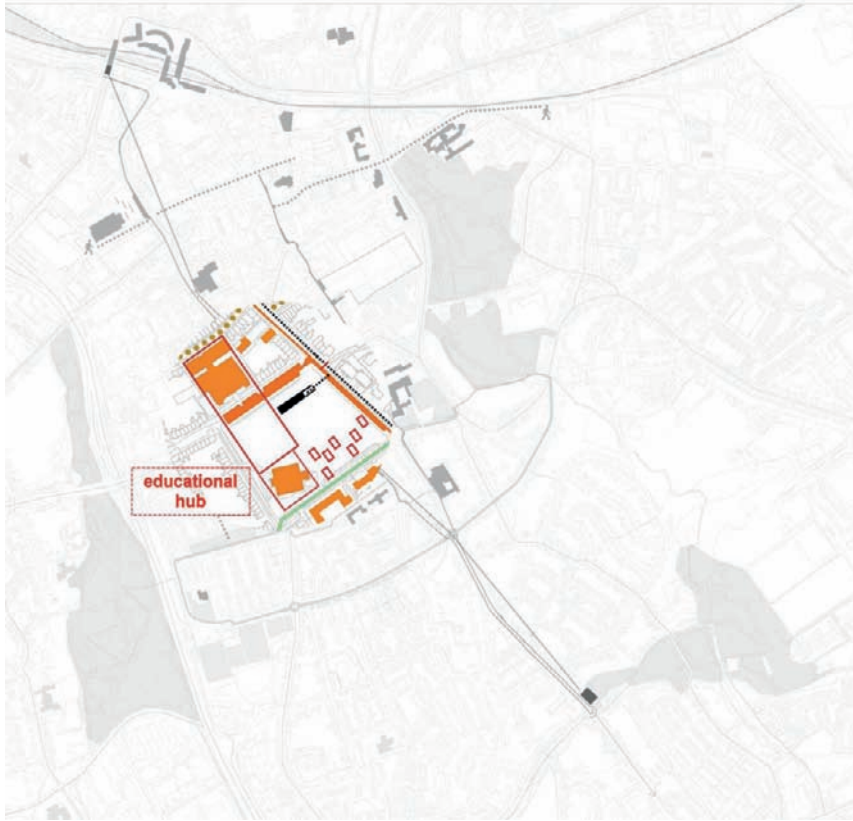


bike lane

parking spots
 bus station
 bike sharing

HUB

EDUCATIONAL AND LIFELONG LEARNING HUB (E.L.L.H.)



The HUB, facing the plaza, is the new heart of Bekkerveld.

The plaza itself can also be used for public events such as fairs, concerts, etc.

The HUB reassembles the pre-existing and disused St. Anne's Church, school and building under a wide flat covering, equipped with solar panels for internal energy production.

These buildings, integrated with new spaces, shape the big structure dedicated to education.

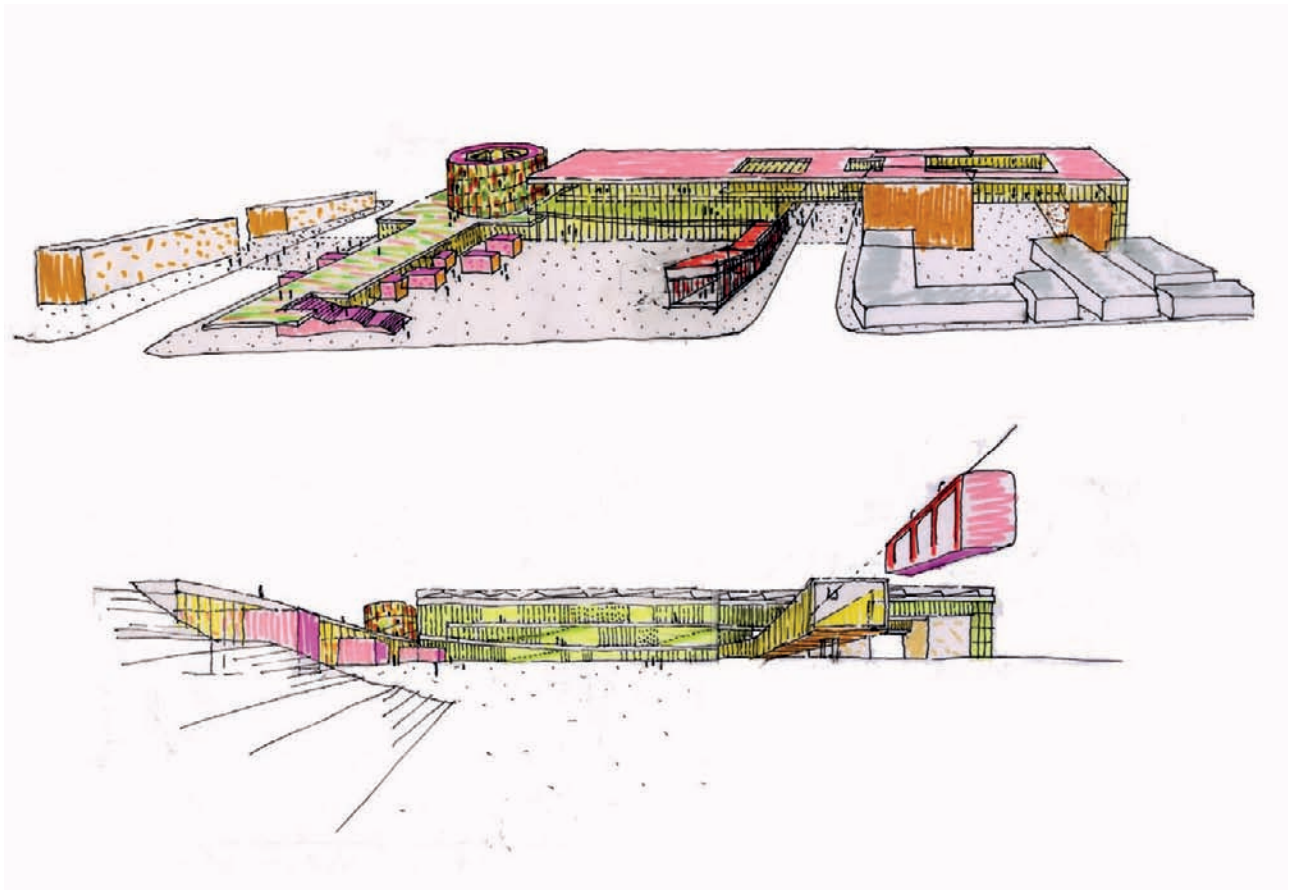
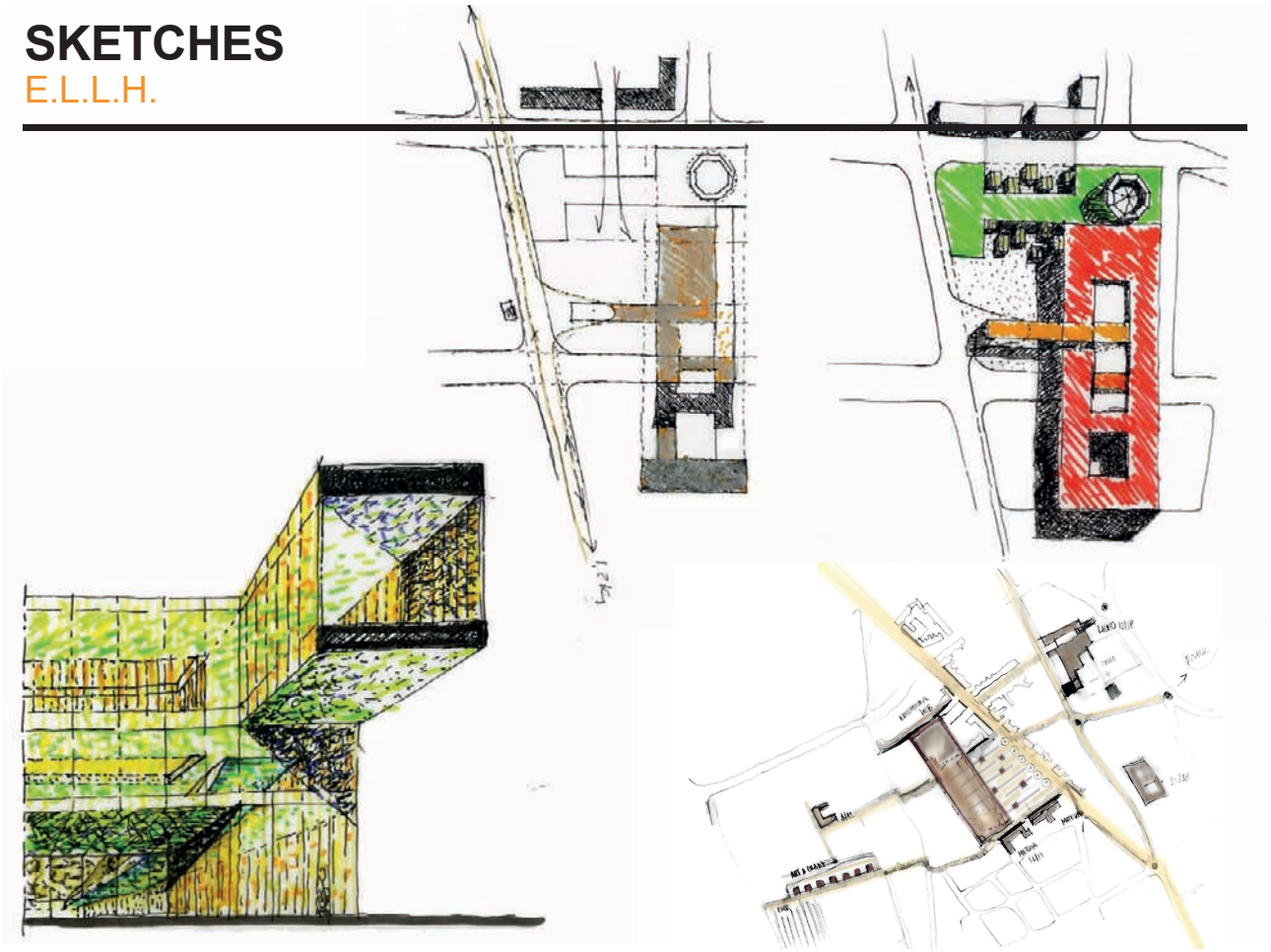
MAQUETTE HUB SQUARE

E.L.L.H.



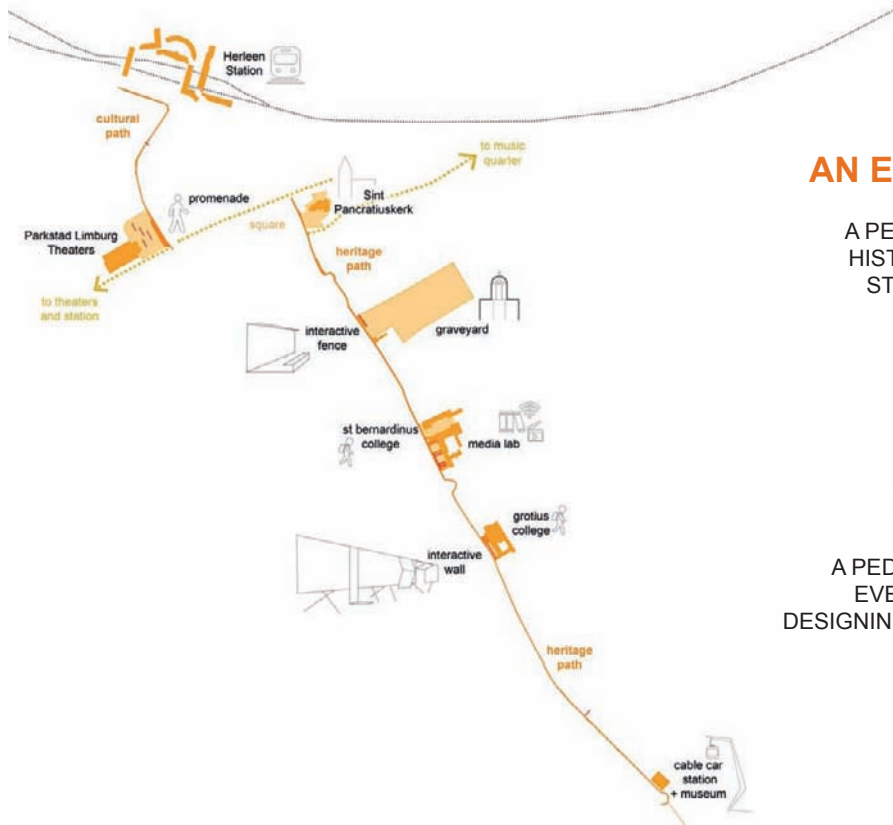
SKETCHES

E.L.L.H.



2 | HERITAGE PATH

station – cathedral – schools - media lab – interactive wall

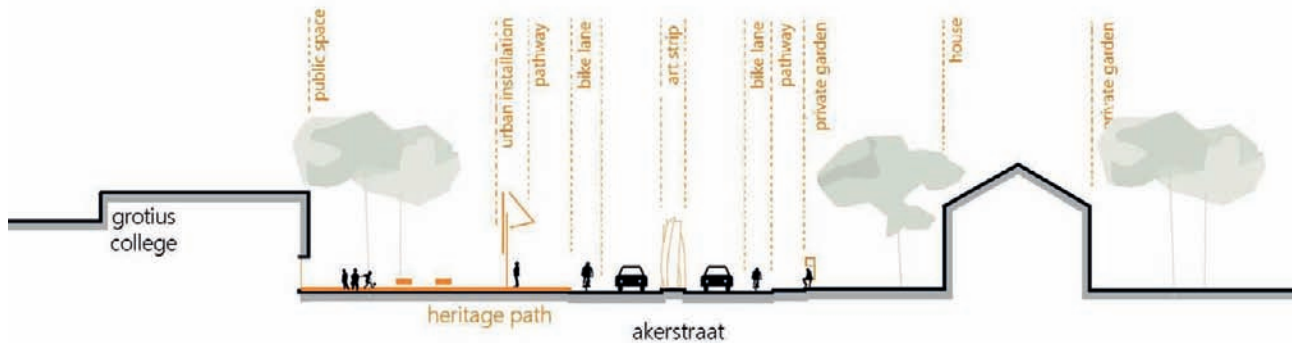


AN EDUCATIONAL PATH

A PEDESTRIAN ROUTE INVOLVING HISTORICAL CENTRE, COLLEGES, ST BERNARDINUS CHURCH AND NEW CULTURAL ACTIVITIES

PEDESTRIAN LINE

A PEDESTRIAN ROUTE TOUCHING EVERY CULTURAL ATTRACTION DESIGNING A SLOW MOVEMENT PATH.

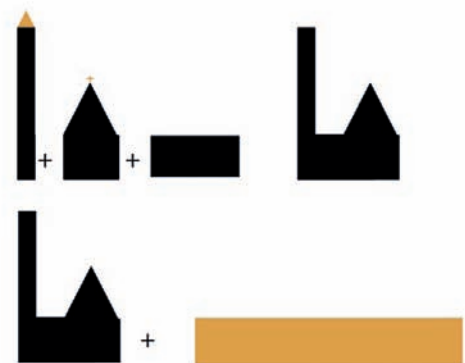
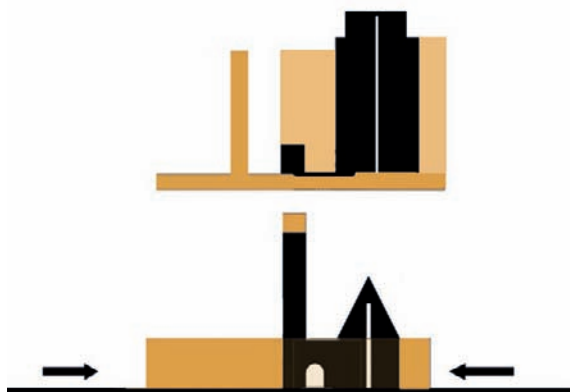
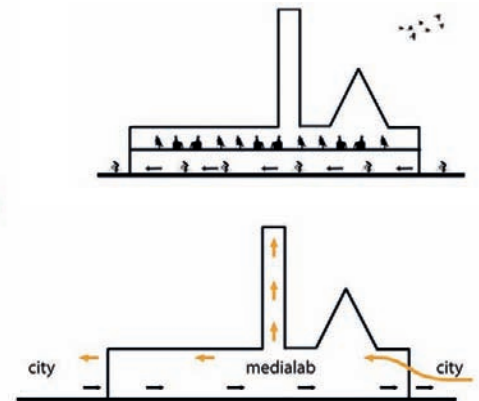
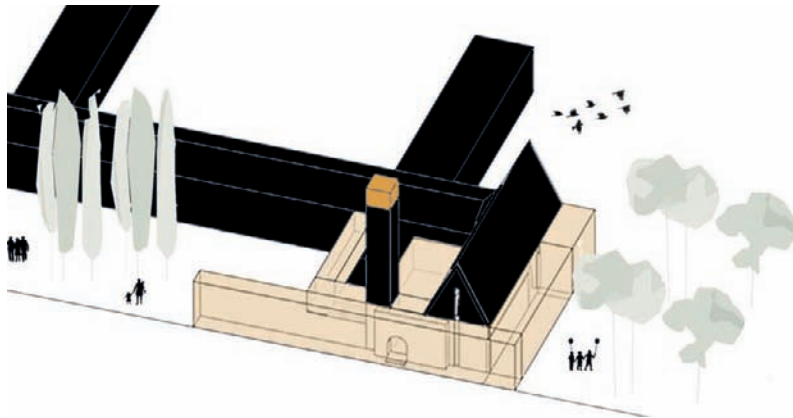


ST BERNARDINUS CHURCH

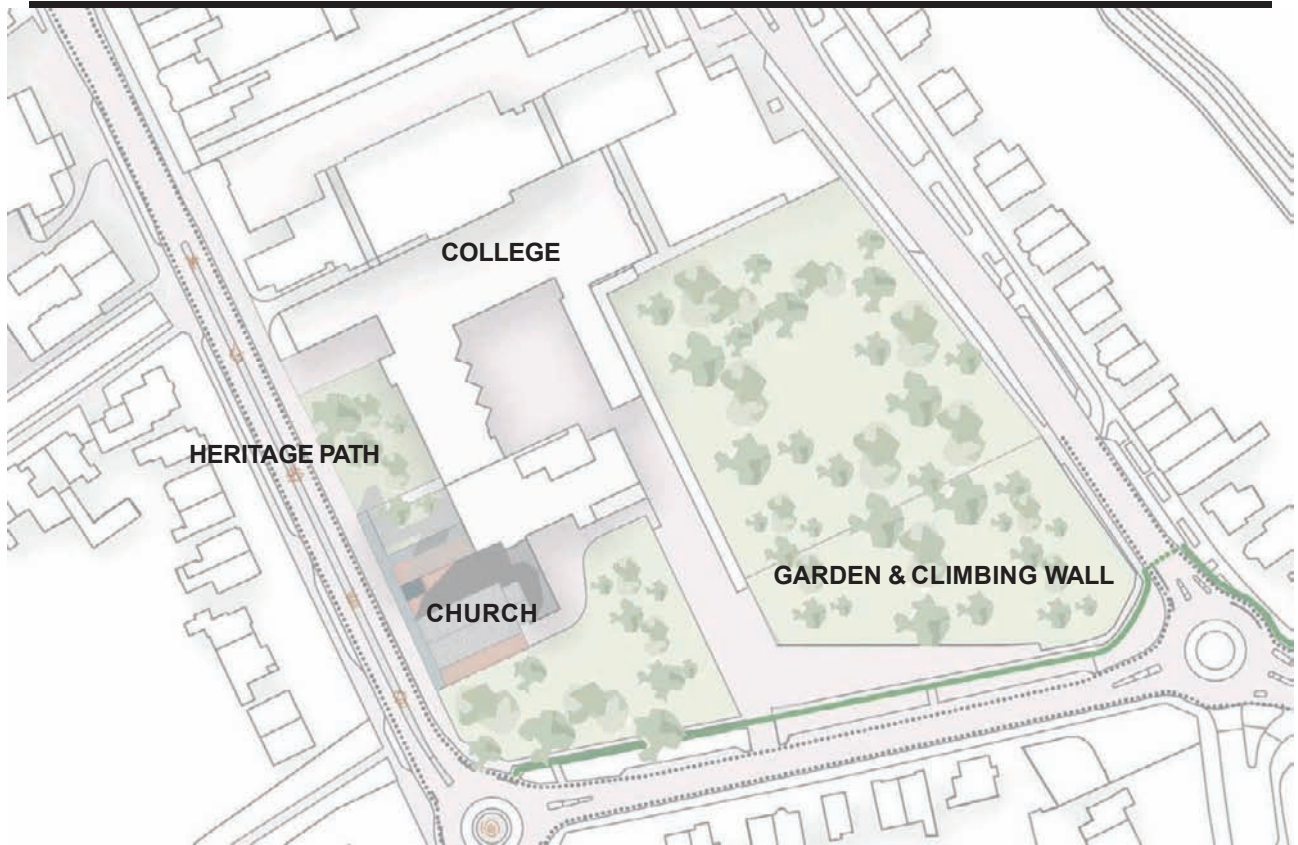
A NEW VISION



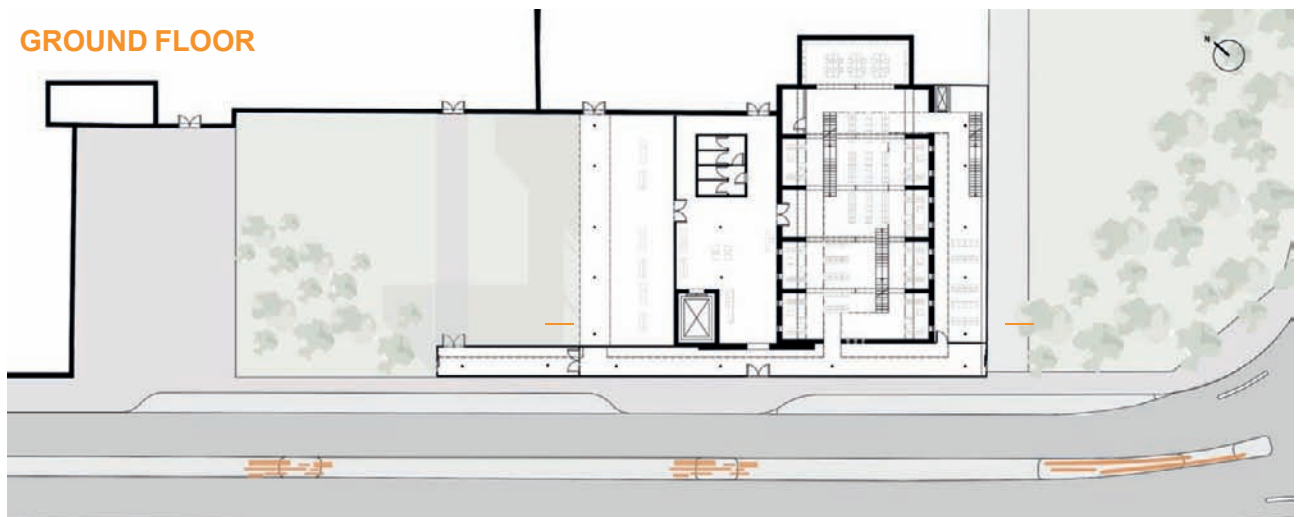
- IMPROVING IDENTITY
- PRESERVING A SYMBOLIC VALUE
- CREATING A NEW FUNCTION
- REUSING BELL TOWER AS A LANDMARK



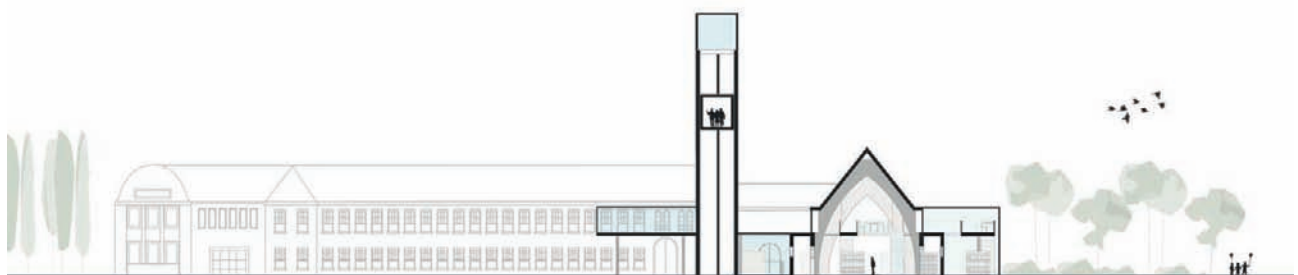
SAINT BERNARDINUS CHURCH PLAN



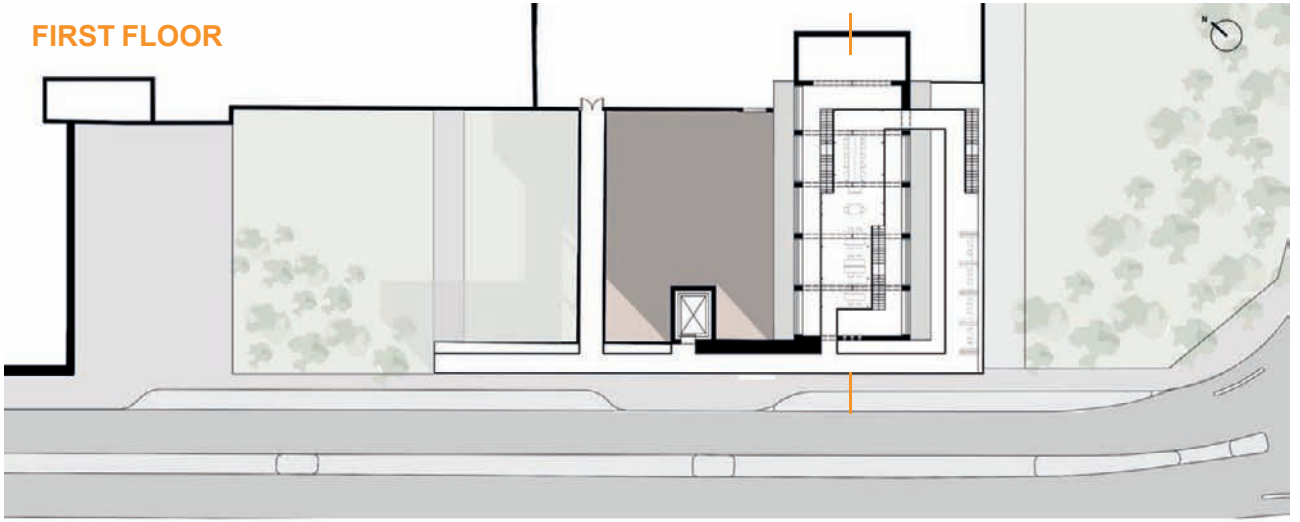
GROUND FLOOR



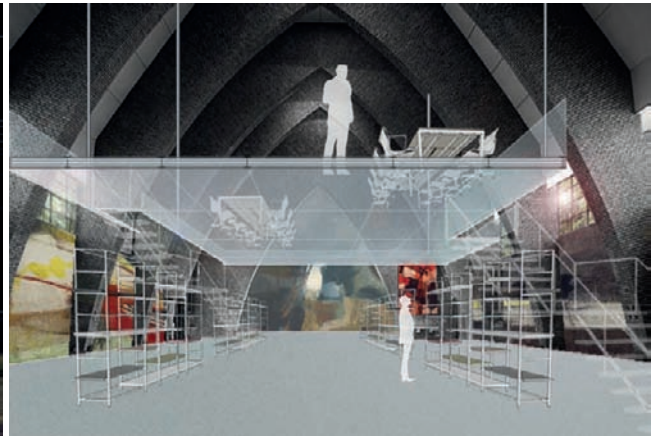
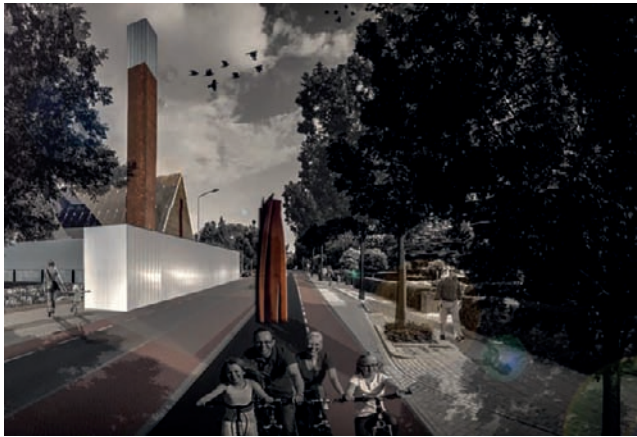
SECTION



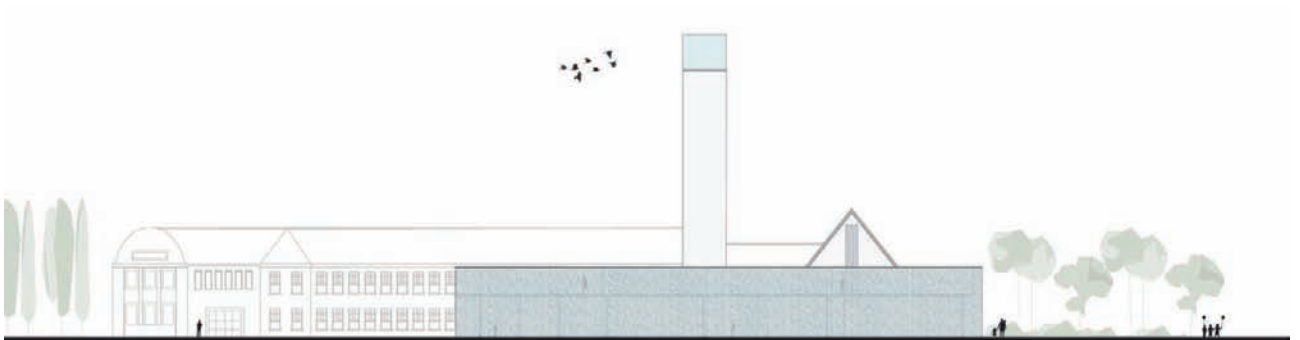
FIRST FLOOR



SECTION

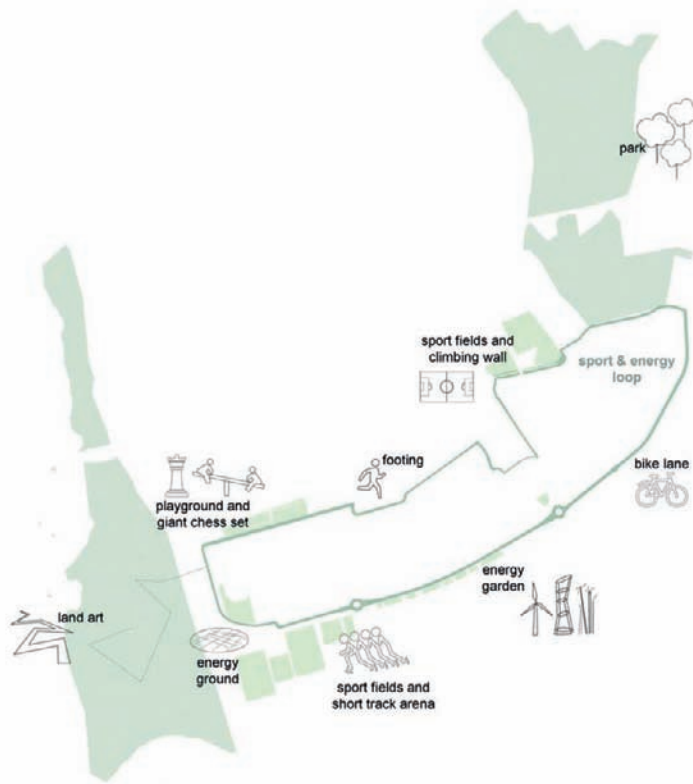


A NEW VISION



3 | SPORT & ENERGY LOOP

bike lane – running – energy garden – playground – parks – land art



The sports and energy axis aims to boost sporting activity all year round.

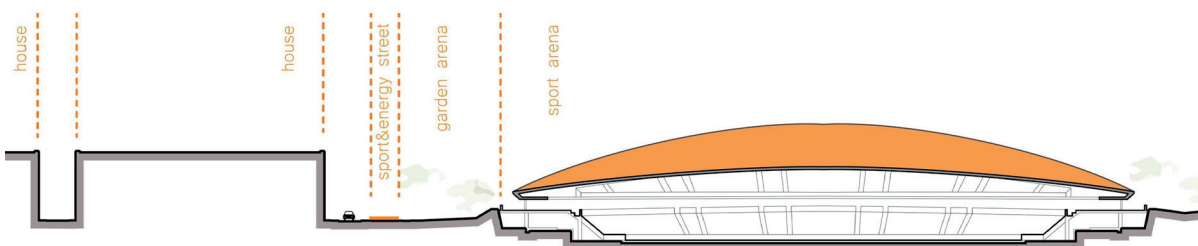
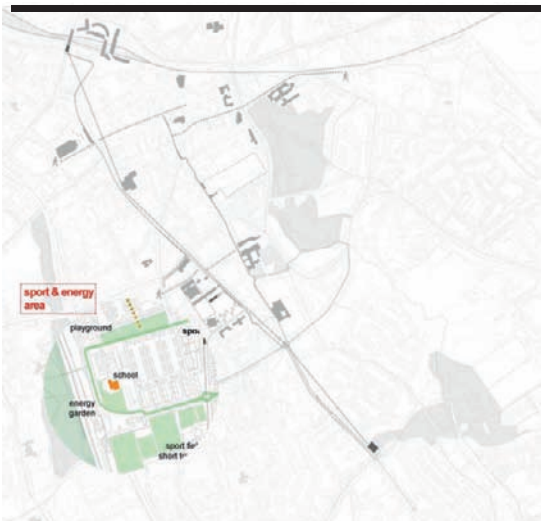
It links and promotes two urban parks at the margins of the same neighbourhood: Welten Kommert park (near the highway) and Aambos park (to the North-East).

The route will juxtapose sporting facilities and scientific or educational installations.

Two other green areas along the route will be re-purposed for sporting (volleyball, basketball, tennis, table-tennis) and leisure (public chess boards, children's playgrounds).

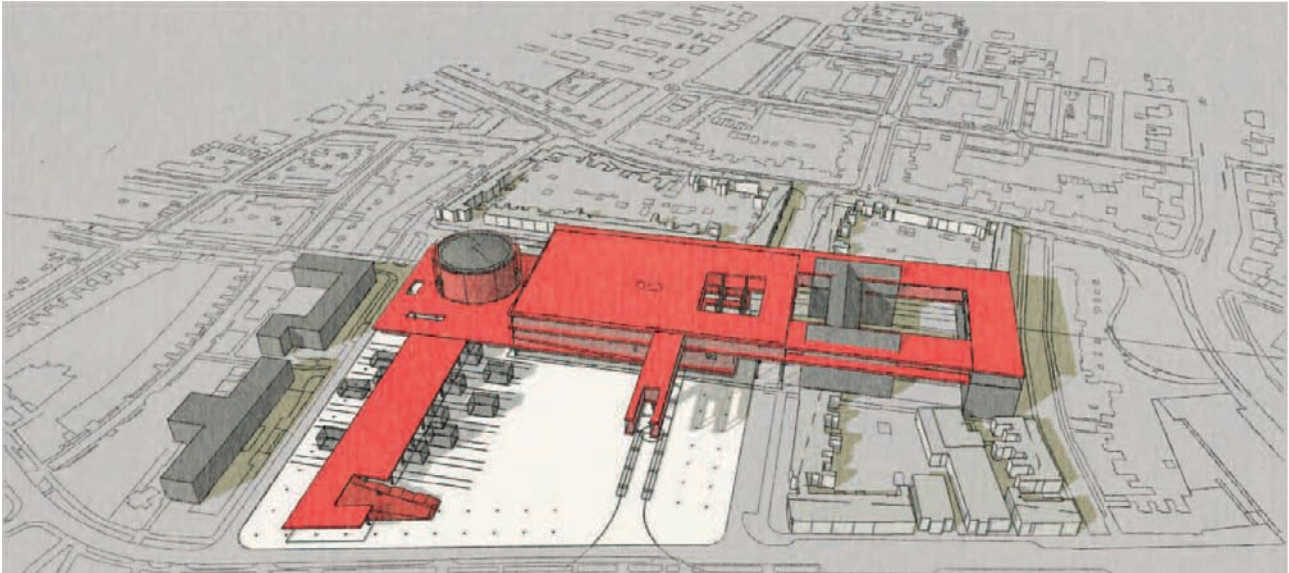
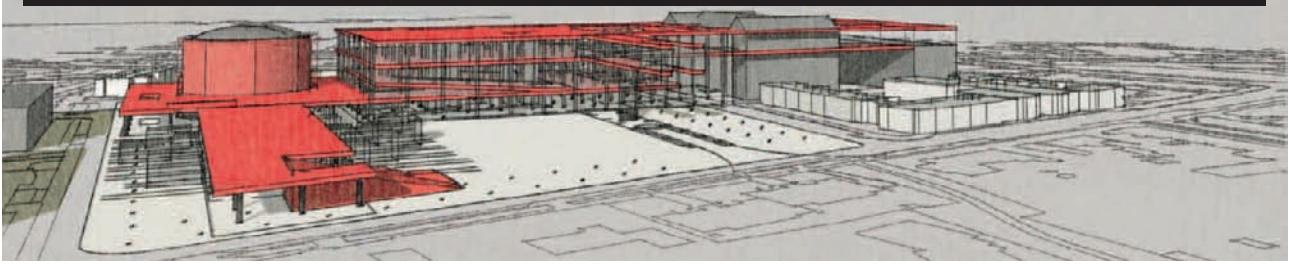
These facilities will alternate with installations and urban systems dedicated to energy production from sustainable sources (micro-scale wind turbines).

SHORT TRACK ARENA



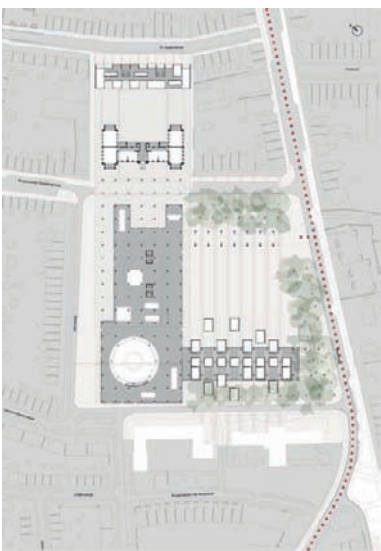
3D SKETCHES

E.L.L.H.

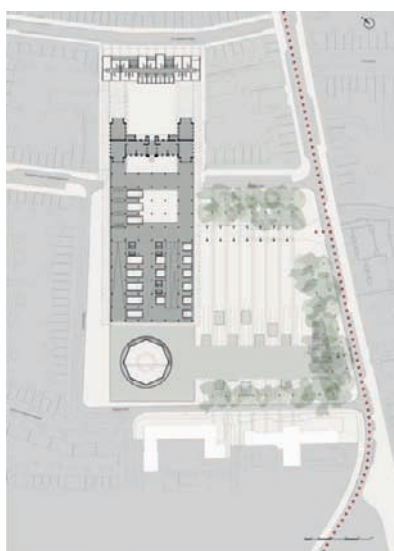


PLANS & SECTIONS

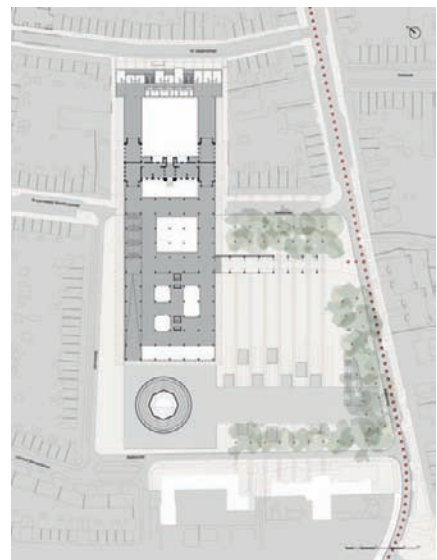
E.L.L.H.



GROUND FLOOR



FIRST FLOOR

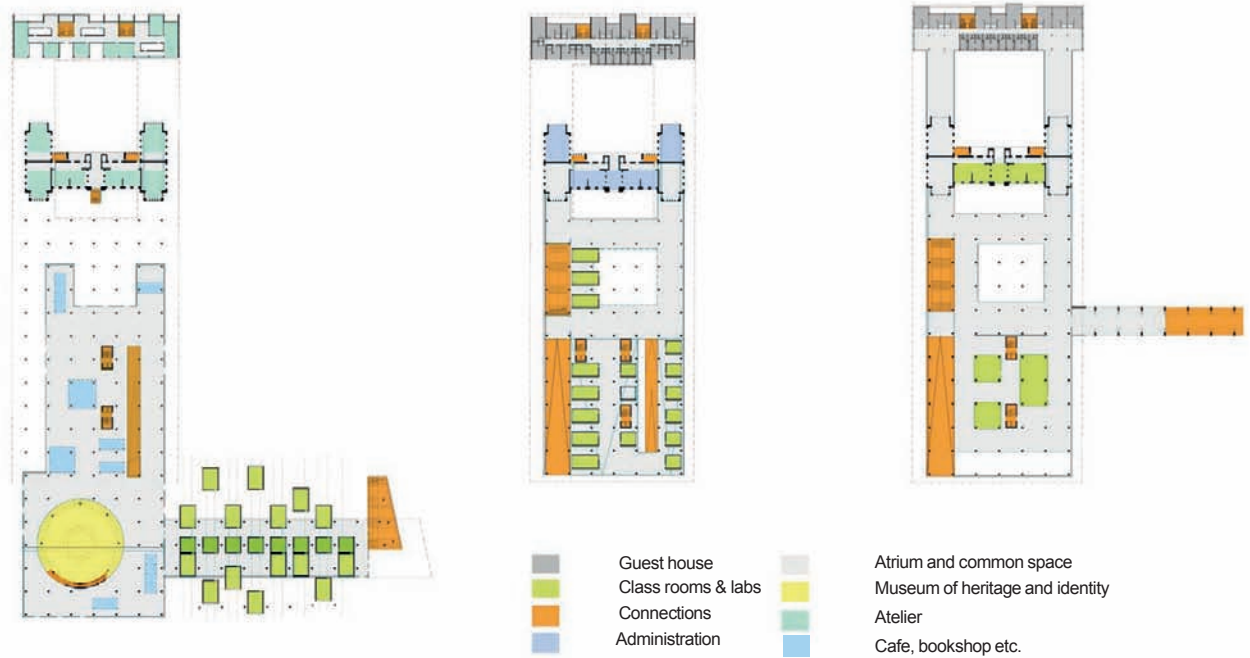


SECOND FLOOR



PLANS & SECTIONS

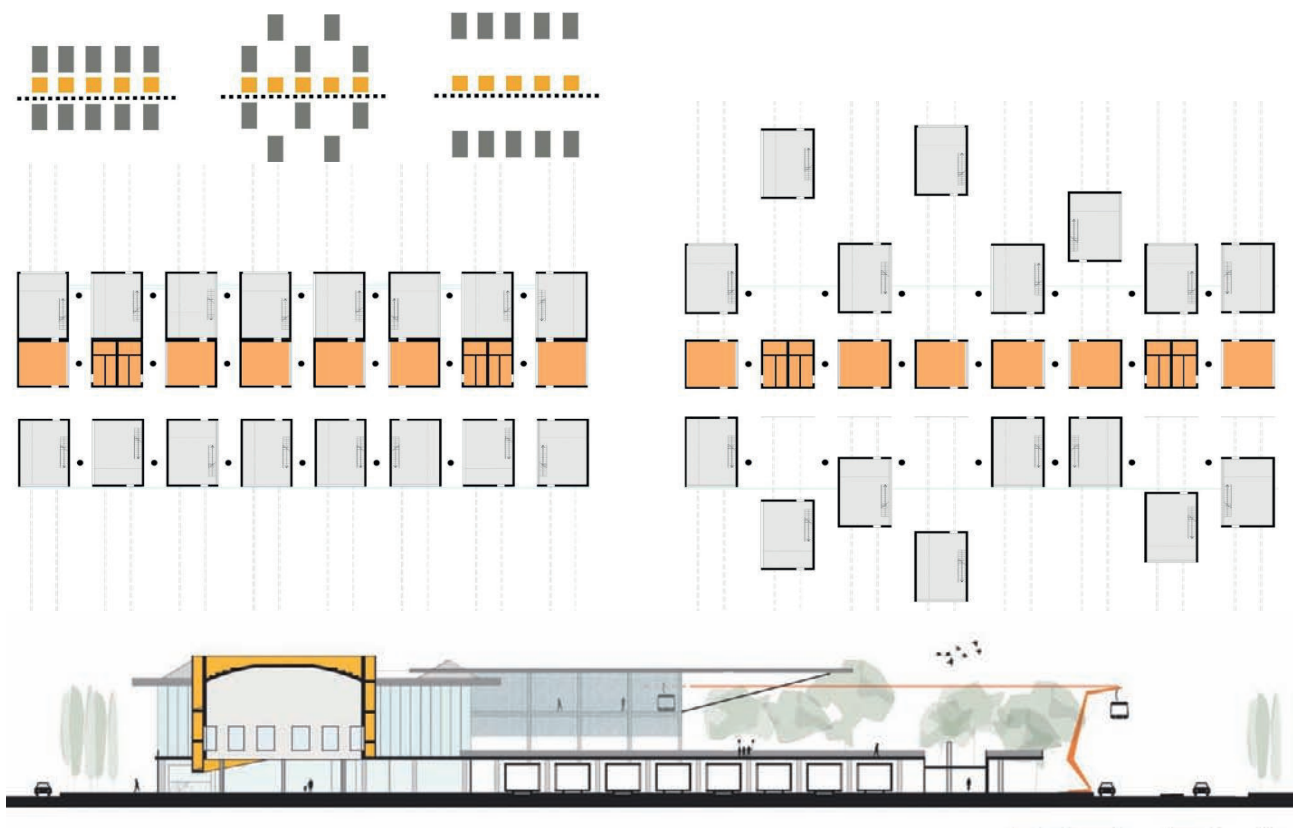
E.L.L.H.

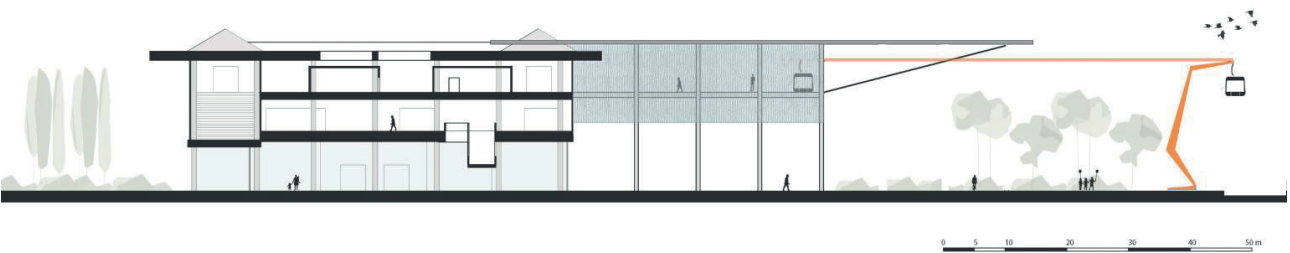
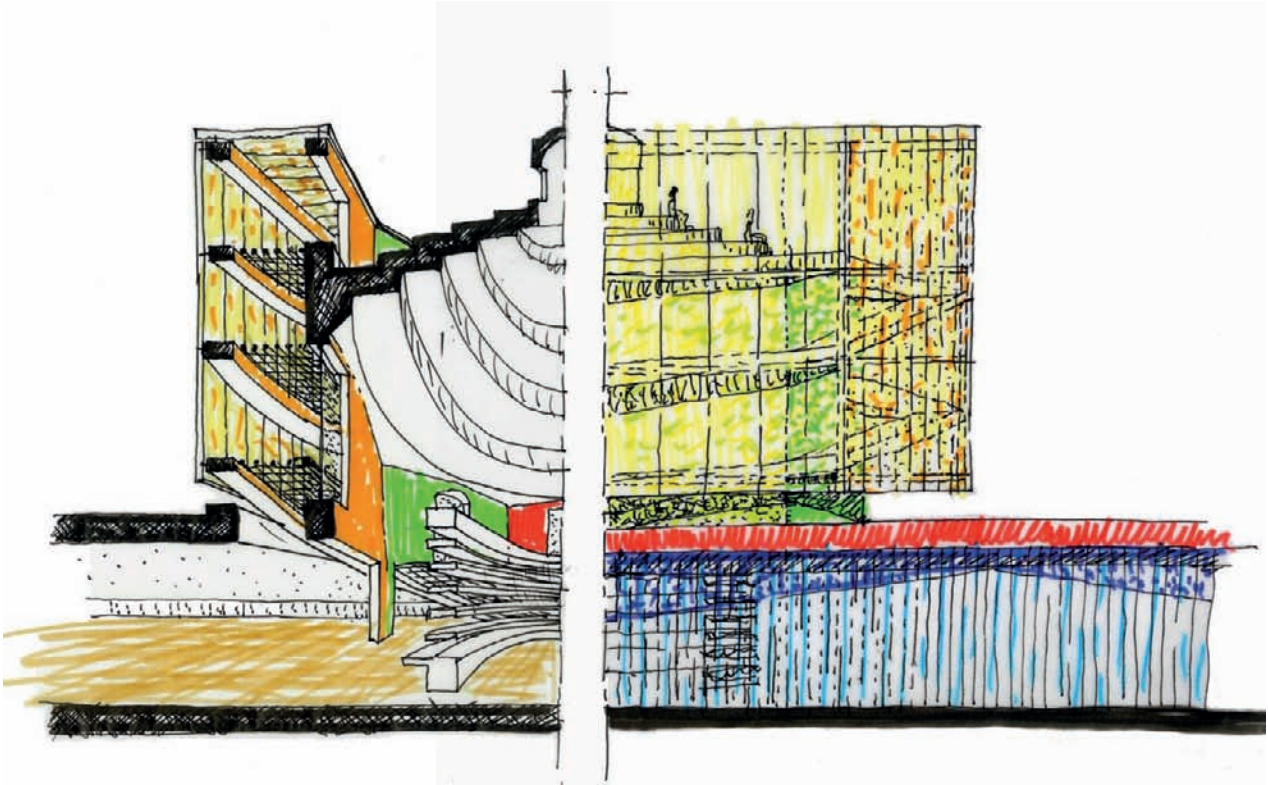


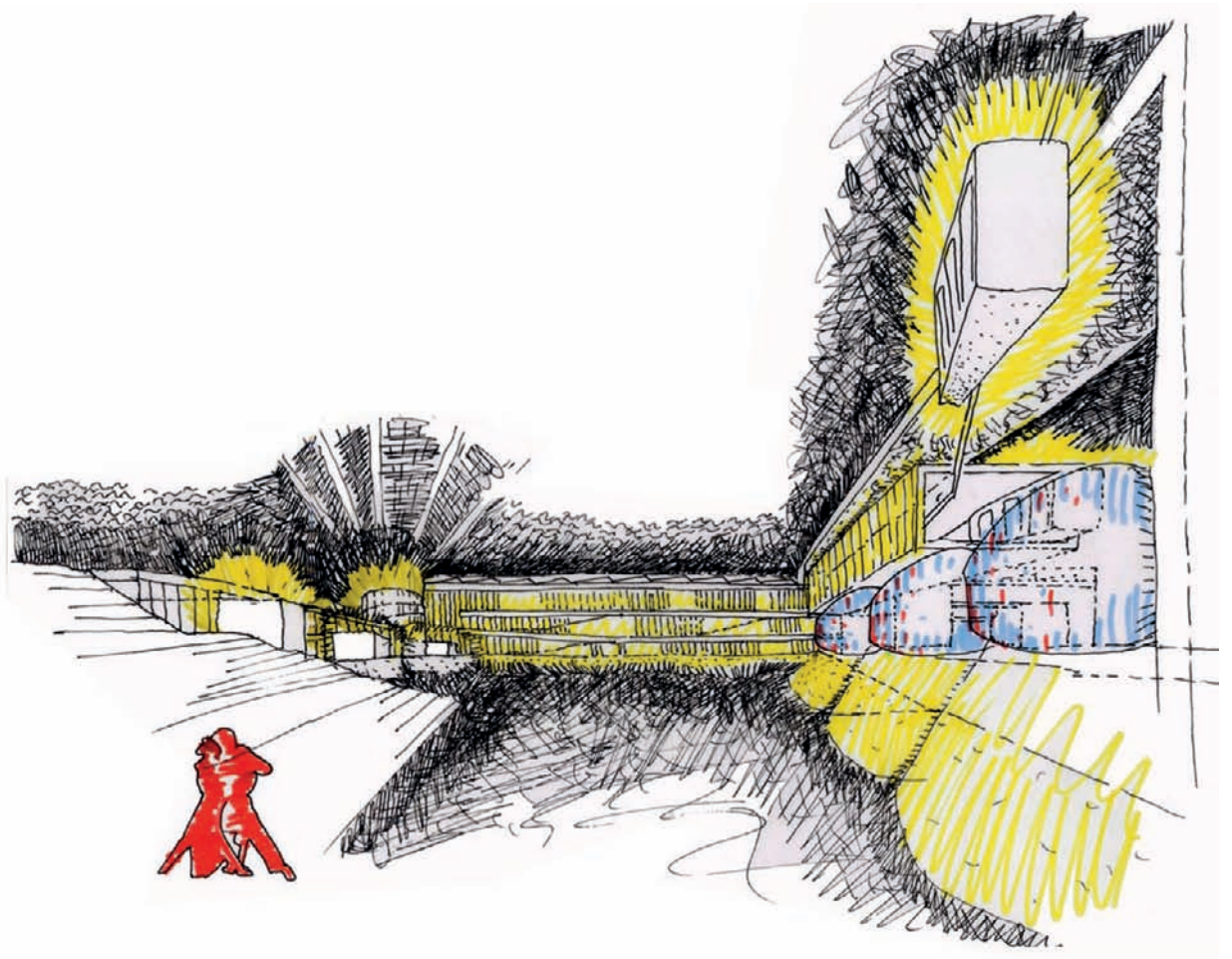
One of the ELLH's key strengths would be its potential in drawing teachers and students from 6 to 18 years old for short learning periods. Ailing from all EU Countries, they would attend refresher courses, traineeships, and workshops. The ELLH would also serves as testing grounds for cutting-edge learning methods.

3D SKETCHES

E.L.L.H.







Objectives and aims of the International Studio Venice 2016

Nowadays Europe is facing the tangible effects of its political unification. the freedom in exchange of goods and people, the openness of labour market, the increasing competitiveness of metropolitan urban areas, the improving of new flows of migration between national borders and their progressive impairment. But how are these everyday life phenomenon's impacting the governance and the policies for our living environment? There is an ongoing attempt on European level, with the subscription of the Pact of Amsterdam, to exhibit these contemporary urban changes, fostering a more sustainable spatial and territorial asset for Europe. There is, indeed, a common awareness to rethink regional identity beyond administrative borders and achieve a more complex and successful cooperation between countries.

Bringing the cross-border issue into the public debate on a European level might mark the starting point for a reflection on the means to overcome physical, economical, administrative or bureaucratic barriers and obsolete practices.

The initiative of the International Studio is inscribed both in the IBA Process as well as the necessity for cooperation, that the several academies involved demonstrate through excellent achievements in research. For example, the studies conducted on Milano peripheral areas by Ilaria Valente (PoliMI), the experimental researches in education by Thijs Asselbergs (TU Delft) on energy supply for living environment and the careful observation of historical layers of the city in IUAV research. The attempt to give new impetus to difficult social conditions in Rome Housing Lab, are evident links that this partnership wants to enlighten as a fundamental resource and method for European regions.

The 2016 International Studio in Venice re-discussed these issues within the exceptional frame of IBA, a potent tool to transform regions both in physical and in mental spaces. The experience of IBA Parkstad in specific, addresses a cross-border lens of observation of its territory, part of the transnational Euregion Meuse-Rhine area linking Belgium, Germany and The Netherlands. Not just as a case study, but as a widely applicable working method to face urban problems at large, by setting up smart territorial schemes and processes. IBA Parkstad can be seen and used as an example of the way international European cooperation's contribute to a better understanding of urban potential in realizing a new vital economy and a social, ecological and spatial sustainable development.

In specific, the International Studio stressed some intended objectives:

- **Enforcing the alliance between research and design in IBA Parkstad** to demonstrate and explore the meaning of Integrated Process for the territorial transformation of the region. The enforcement also regarded the branch of IBA Academy. It was in fact the first time that the academies worked together on IBA Parkstad issues, moreover the IBA Academy also dialogued with relevant Italian research institutions. This could provide IBA Academy with a new podium to reach a broader alliance on European scale.
- **Establishing a common grammar to act on territory**, by fostering a dialogue on European level to address and deepen the issues that form the base of the IBA Parkstad process, such as the motto "Energy City, Flexible City and Recycle City" or "Revitalization by Reconciliation". Not only technological improvements can guarantee innovation in IBA Parkstad design processes, but also which strategy you choose to transform the region (urban design, territorial strategy, architecture as engine for economic revitalization etc).
- **Acquiring international attention**, in order to obtain national or European funding's for research and design (participant Academies and IBA Parkstad projects). Approaching the region of Parkstad from a broader perspective (also in the framework of cross-border regions) could help in attracting interest on European level, but also to anticipate the emerging European panorama of the coming years.

Moreover, it needs to be mentioned that the International Studio, as part of IBA Academy activities, was also part of its Manifesto as stated on the website, i.e. the Interdisciplinary design study workshops: a new strategy for the Parkstad structure.

First results of the International Studio

The short term of the project consisted of the International Studio Workshop 2016, hosted at TU Delft and at IUAV in Venice. This three week workshop had the objective to set common ground for a shared research on the topic of Cross-Border Regions, thanks to the specific situation in IBA Parkstad. The method of "researching by design" was applied to some case study selected in Parkstad area, exemplar to show the potential (for public and institutions) of stressing transnational goals for the region:

IMPLEMENTING TRANSNATIONAL RELATIONS IN INFRASTRUCTURAL ACCESSIBILITY

1. North Area, case study **Schinveld Airport Gateway**; Research unit: **Politecnico di Milano** - scientific coordinator prof. Ilaria Valente;

RETRACING COMMON IDENTITIES BEYOND BORDERS

1. Central Area - Heerlen, case study **Roman Quarter**; Research units: **IUAV** - scientific coordinators prof. Armando Dal Fabbro, Mauro Marzo; **Hasselt University** - scientific coordinator: prof. Peter Bongaerts;
2. South Area - **Roman Axis** from Heerlen to Aachen; Research units: **IUAV** - scientific coordinators prof. Armando Dal Fabbro, Mauro Marzo; **RWTH** - scientific coordinator: prof. Wim van den Bergh;

DEFINING ACTIONS OF REVITALIZATION FOR CONTEMPORARY URBAN AREAS

1. Central Area - **Bekkerveld district** and other parts of urban fabric; Research Units: **La Sapienza Roma** - scientific coordinator: prof. Domizia Mandolesi;

COLLATERAL ISSUES

1. Energy innovation for transforming territory: **TU Delft** - scientific coordinator: prof. Thijs Asselbergs;
2. Recycling Urban fabric: **TU Eindhoven - Maastricht Academy** - scientific coordinator: Dr. Jos Bosman

Follow up procedure & implementation of research in design process

After the short term program each Academy is developing a midterm program related to educational or research activities. The IBA Academy network (TU Delft, TU Eindhoven, Maastricht Academy and Hasselt University) already started these programs, i.e. graduation or master studio, two years ago, accumulating results of students' proposals on some Parkstad locations. The Universities in Italy have different stances on establishing new connections with IBA Parkstad:

- IUAV is interested to develop the Roman Quarter case study through a Master Thesis of students (5th year);
- Politecnico di Milano expressed the possibility to evaluate research programs on Parkstad within the PHD Program, and is already interested to evaluate a possible co-participation with Interreg program;
- Roma La Sapienza will initiate a PHD Seminar on IBA Parkstad in the next semester.

A possible implementation of the case study could, in a direct form, be discussed by the Area Directors (North/Middle/South/Parks etc.) with the contact persons of each Research Unit trying to match the respective agenda (one for Academy and one for IBA Parkstad), involving them within the specific on going Design process for the locations that were selected for the Studio.

Another possible implementation, regarding the interaction between research and design, could be addressed by European and National Funds. In this case the Academies could be partners of Calls for Funding's that would financially cover their work.

Possible international calls, as investigated by Yvette Masson Zanussi during the European Week for Regions and Cities workshop in Brussels (12th of October 2016), are:

Urban Initiative Action

<http://www.uia-initiative.eu/en/about-us/what-urban-innovative-actions>

The Investment Plan for Europe

http://ec.europa.eu/growth/industry/innovation/funding/efsi_en

Research : Horizon 2020, EU framework Programme for research and innovation / Cross cutting activities (URBAN TOPICS) SCC-04-2016: Sustainable urbanisation

http://ec.europa.eu/research/participants/data/ref/h2020/wp/2016_2017/main/h2020-wp1617-focus_en.pdf

Urbact (Panellist of the Workshop)

<http://urbact.eu/good-practice-call-soon-be-launched>

Interreg Program

<http://www.interregeurope.eu/about-us/>

<http://www.interregeurope.eu/news-and-events/news/231/policy-learning-platforms-are-launched-sign-up/>

DG Culture Calls : cooperation projects

https://ec.europa.eu/info/eu-regional-and-urban-development/cities/priority-themes-cities/culture-cities_en

https://ec.europa.eu/programmes/creative-europe/culture/european-cooperation-projects_en

These are some suggestions, discussed with Yvette Masson Zanussi, that could be developed to establish a partnership in cooperation with the Academies. These funding's are useful for research as well as for implementing the projects (Referent person for IBA Parkstad: **Twan de Bruijn**)

Some other recommendations could be underlined here as necessary steps to enforce the contribution of Research and Academy to the development of the projects in the IBA Parkstad process:

1. Inventory of Research & Education results, dissemination of education results within the IBA Parkstad team, the political parties; stakeholders; civil society (enforcing the integrated process). It could be an event or exhibition to discuss issues and potential design for Parkstad.
2. A common agenda between Academies and IBA Parkstad, agreements for PHD Programs involved in the Design process.
3. International stage for master students and graduates (PEP on European level) to involve the students that worked on Parkstad projects within the design team.

Contact persons research units

TU Delft: Thijs Asselbergs_ ta@ataindex.nl;

Roberto Cavallo_ r.cavallo@tudelft.nl;

Lidy Meijers_ w.l.e.c.meijers@tudelft.nl;

TU Eindhoven/Maastricht Academy: Jos Bosman_ jos.bosman@tue.nl;

Hasselt University: Nick Ceulemans_ nick.ceulemans@uhasselt.be;

RWTH: Wim van den Bergh_ bergh@wonhbau.arch.rwth-aachen.de;

Carolin Stapenhorst_ cstapenhorst@wk.arch.rwth-aachen.de;

Politecnico di Milano: Ilaria Valente_ ilaria.valente@polimi.it;

Marco Bovati_ marco.bovati@polimi.it;

IUAV: Mauro Marzo_ mauro.marzo@iuav.it;

Claudia Pirina_ clapirina@hotmail.com;

Roma La Sapienza: Domizia Mandolesi_ domizia.mandolesi@uniroma1.it

