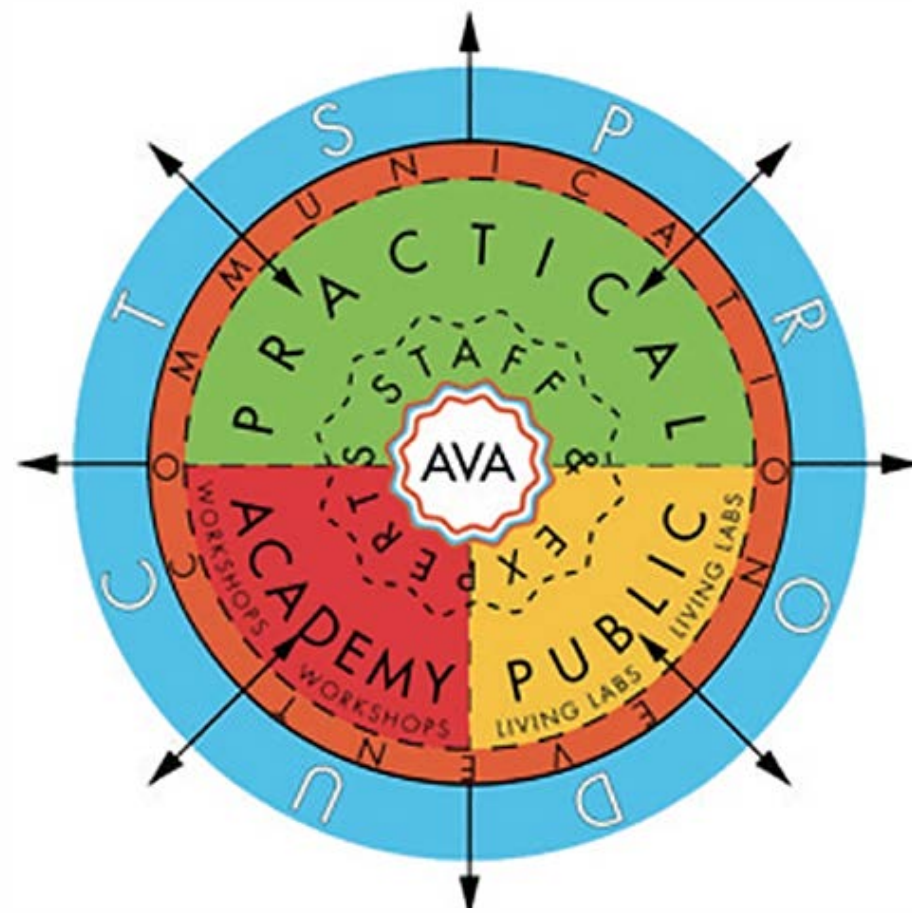


Dottorato di ricerca in Architettura. Teorie e Progetto
coordinatore prof. Antonino Saggio



IBA Parkstad 2013 -2020
DESIGN STRATEGIES
TRANSFORMING CROSS-BORDER REGIONS

Seminario/Workshop
Roma 1 - 28 febbraio 2017

Responsabili scientifici: **prof. A. De Cesaris**
prof. D. Mandolesi - HousingLab DiAP

Dottorandi XXXI ciclo : **dott. V. Perna,**
dott. G. Stancato, dott. A. Zilio

Valerio Perna, Gabriele Stancato, Alessandro Zilio



HEERLEN NEW CITY “DATA” HALL

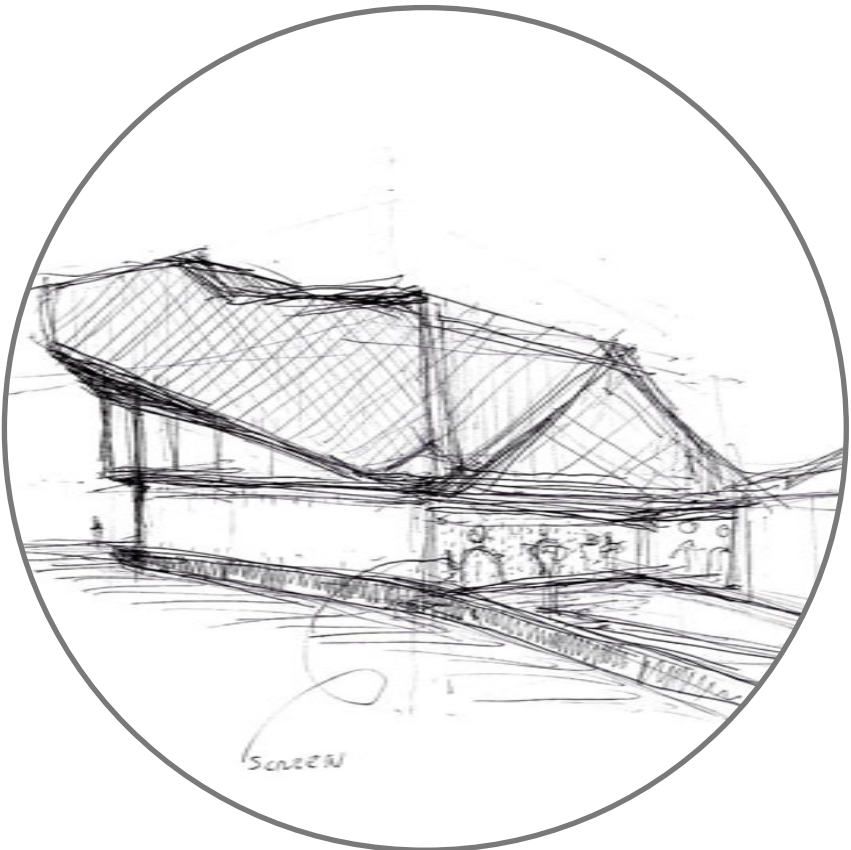
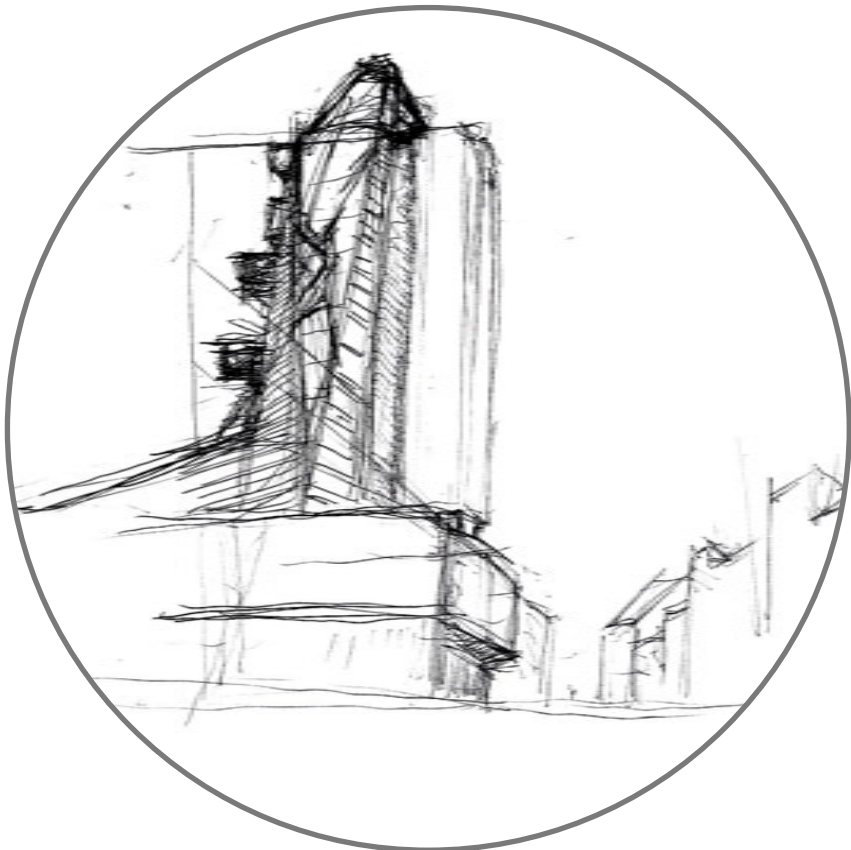
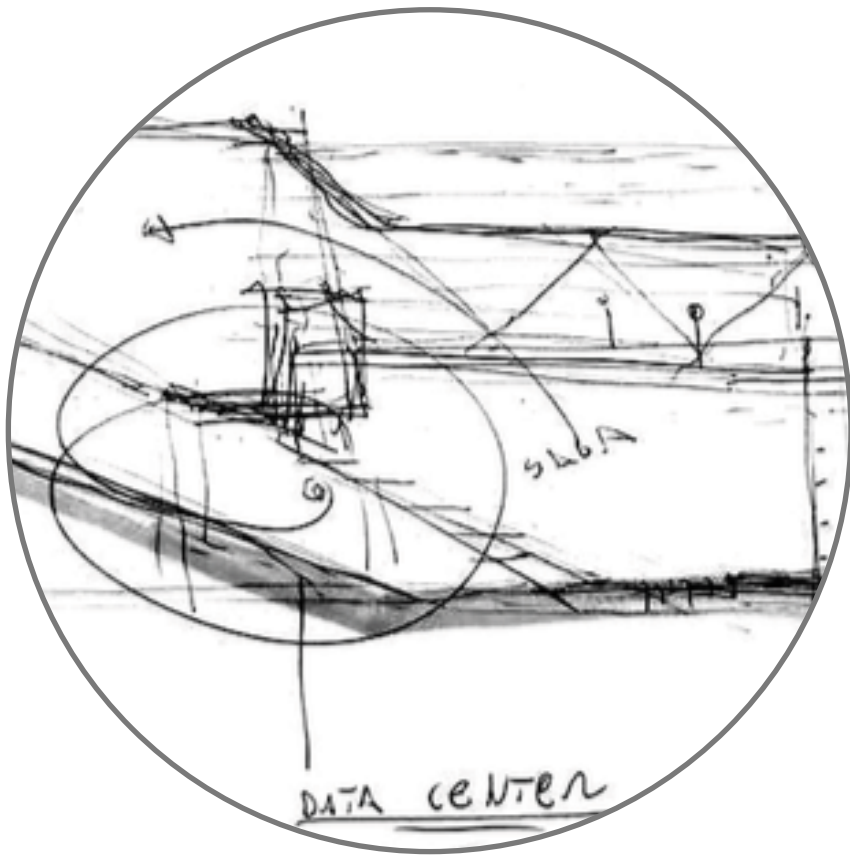
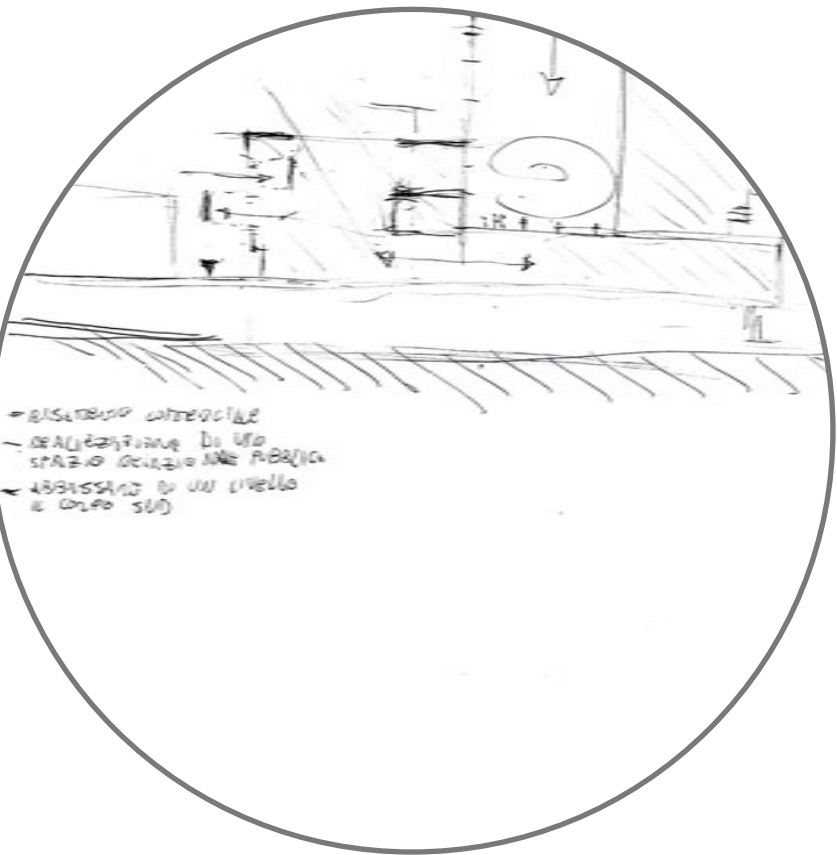
A NEW CONCEPT FOR A TRANSNATIONAL TOWN HALL:
FLUID DATA / CIVIC CULTURE STRENGTH

CONCEPT

PLANNING ACTION

EVOLUTION OF
TOWN HALL

THE NEW ROLE
OF DATA



STRATIFICATION

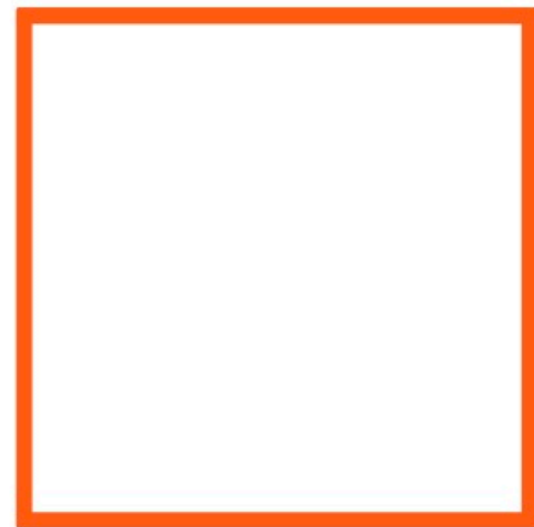
CONNECTION

EVOLUTION OF TOWN HALL

From a symbol of
politic power to a
place of participation.
Town Hall is more
than a building.

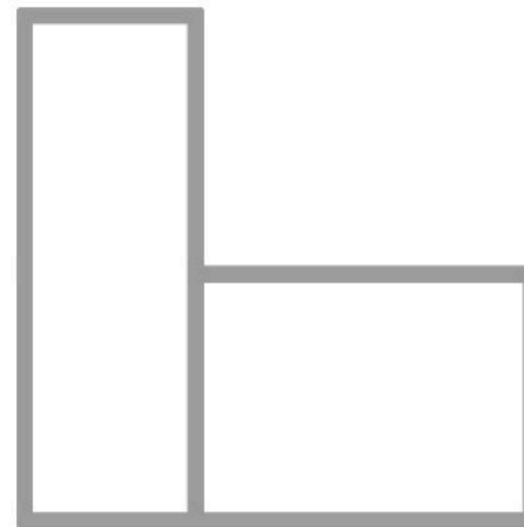
AGORA'

Place of participation

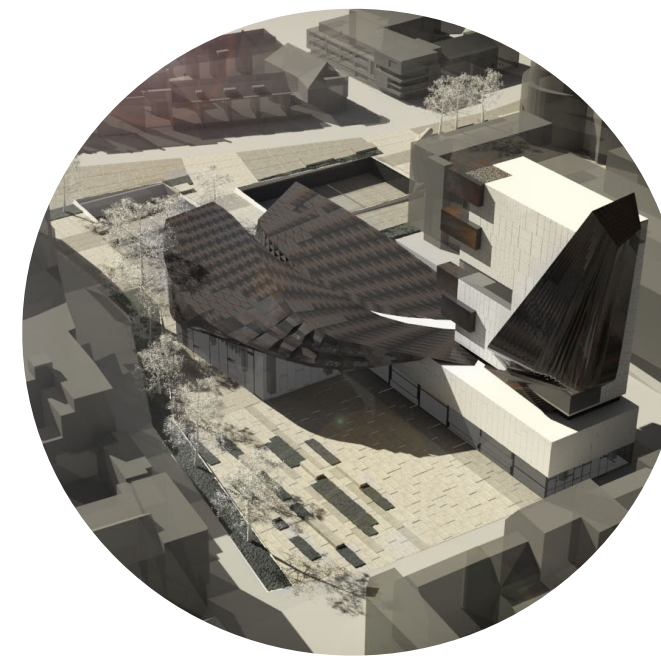
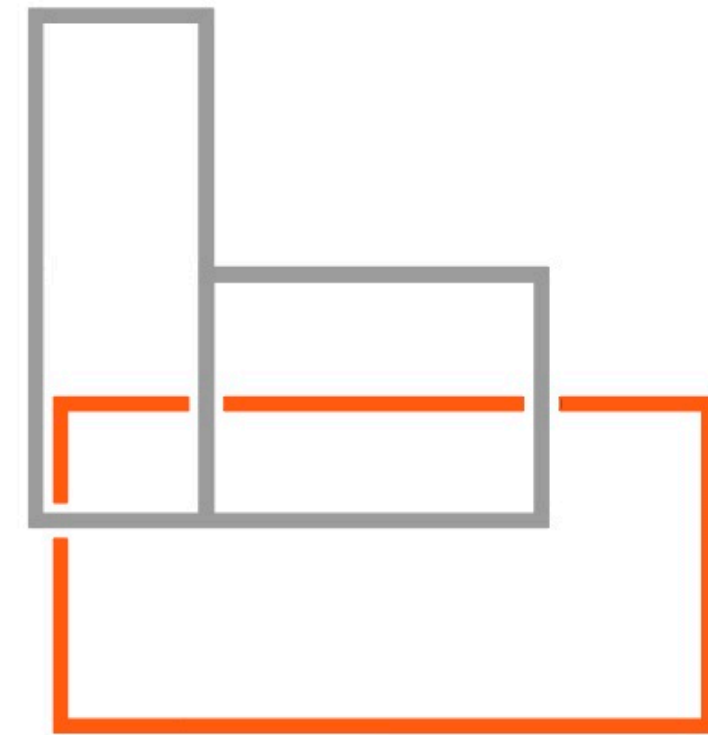


TOWER PALACE

Symbol of politic power



FUTURE TOWN HALL

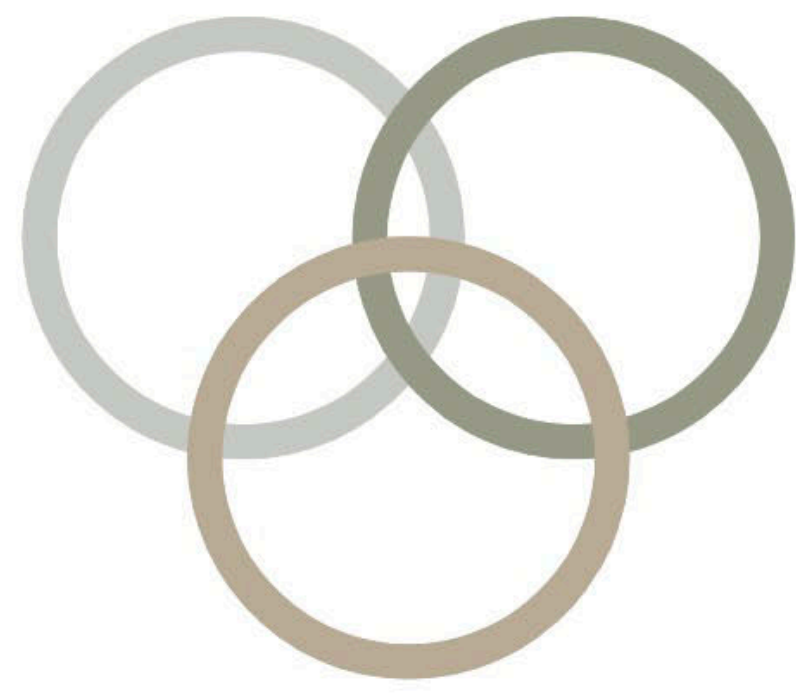


EVOLUTION OF TOWN HALL

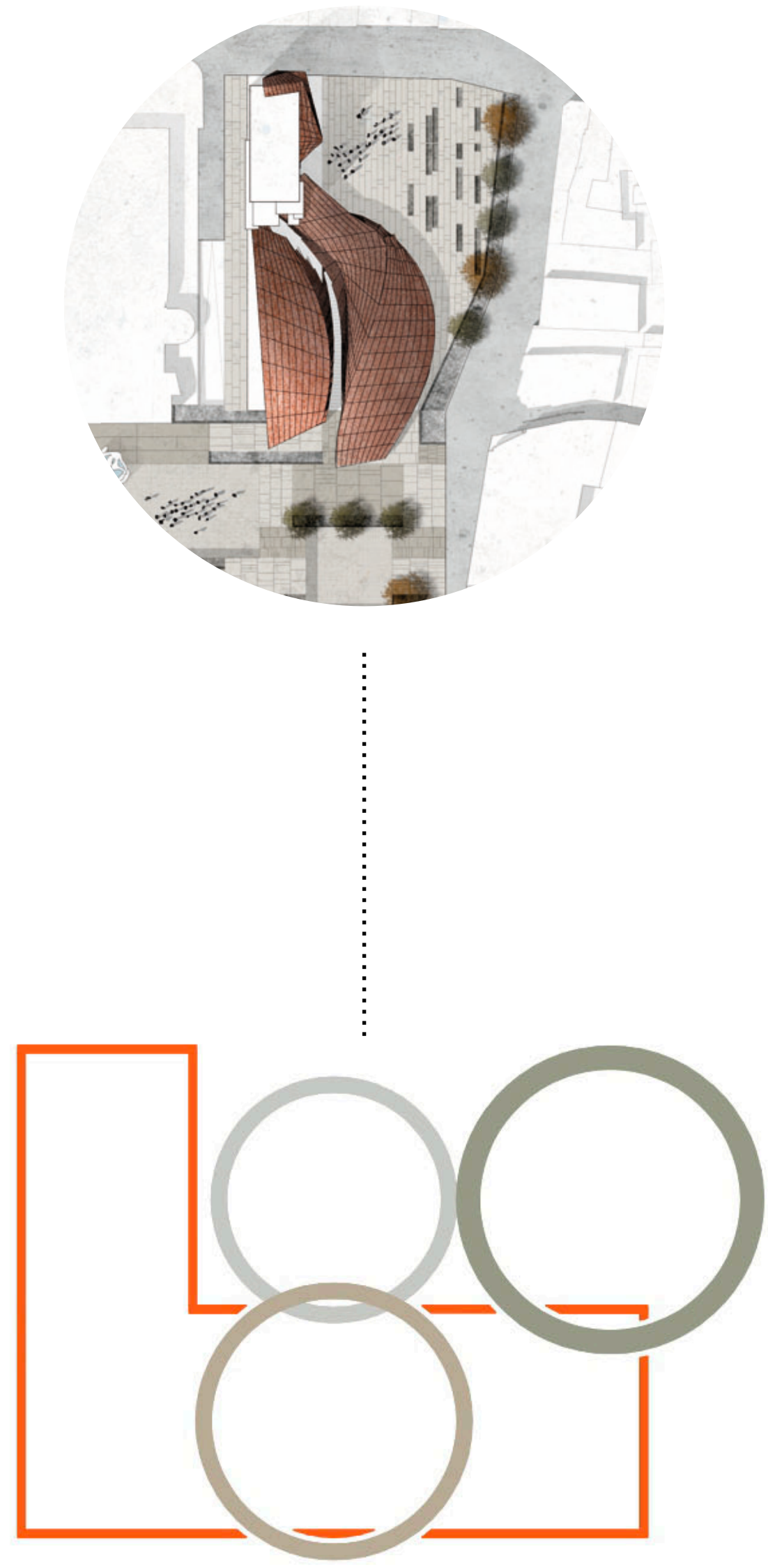
Our goal is to place the new functions in the existing structural layout and combine them with a new system of squares, which have the task to connect the new structure with the urban fabric.



FIRST HYPOTHESIS OF FUNCTIONAL CONNECTIONS

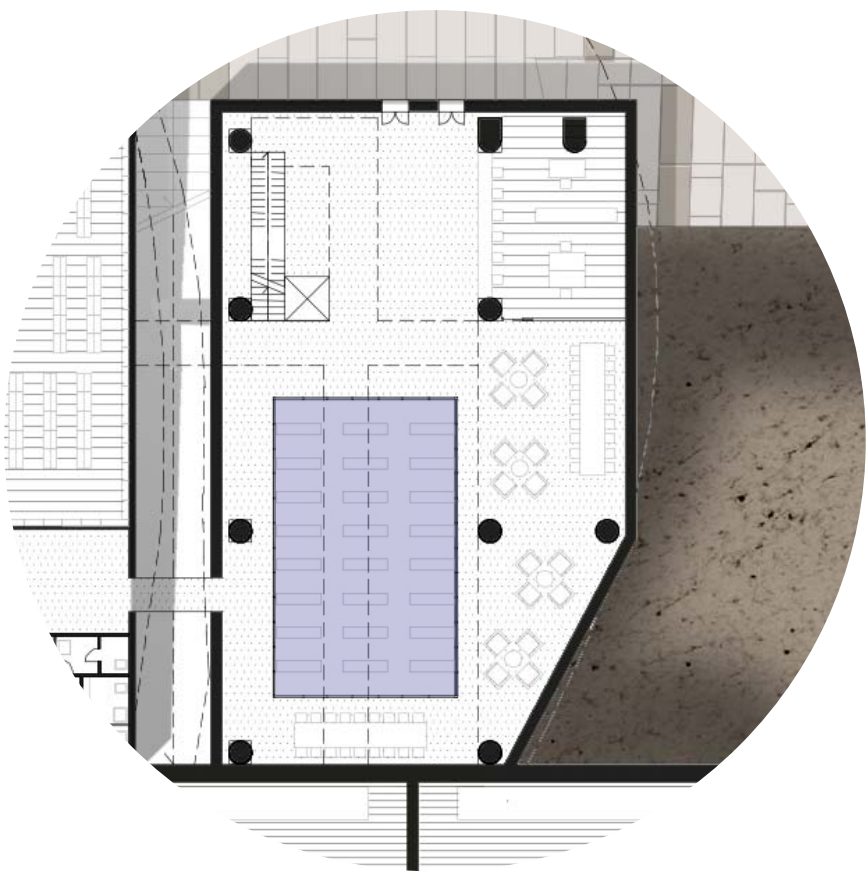
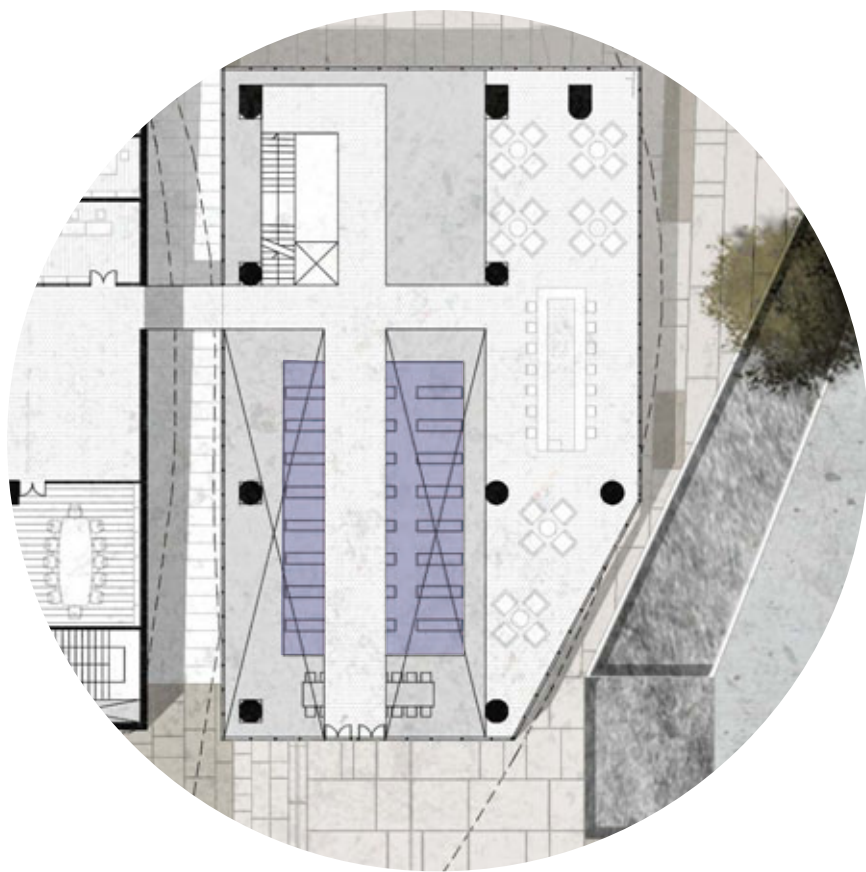


FINAL LAYOUT OF FUNCTIONAL CONNECTIONS



THE NEW ROLE OF DATA

The public realm is gradually moving to two different levels: the material one and the "immateriality" of virtual information.



PUBLIC DATA CENTER

- Collection of data on urban scale
- Collection of data on transnational scale
- Transnational free data access

TRANSNATIONAL ADMINISTRATION

- Laws analysis and interrelation
- Urban strategies analysis
- Resources analysis and optimization
- Development of common politics for business

DEVELOPMENT

Data services for start up

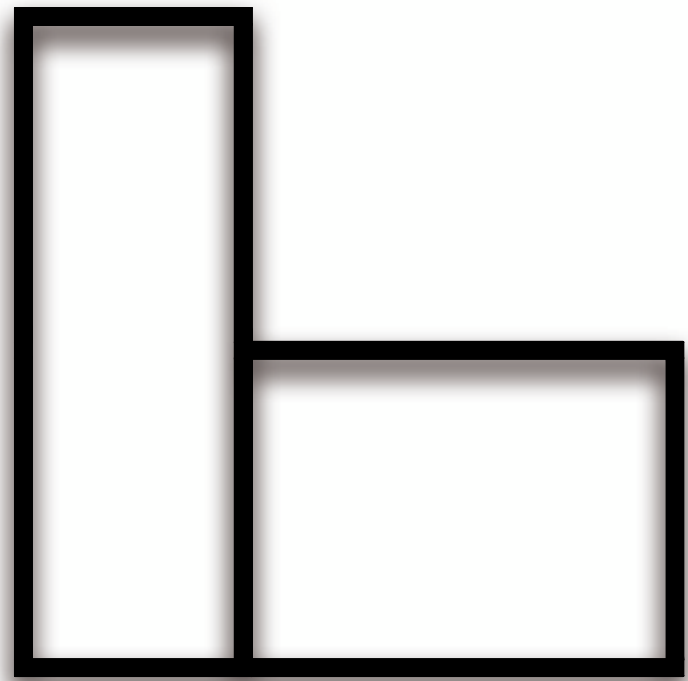
TOWN ADMINISTRATION

Improvement of traditional functions

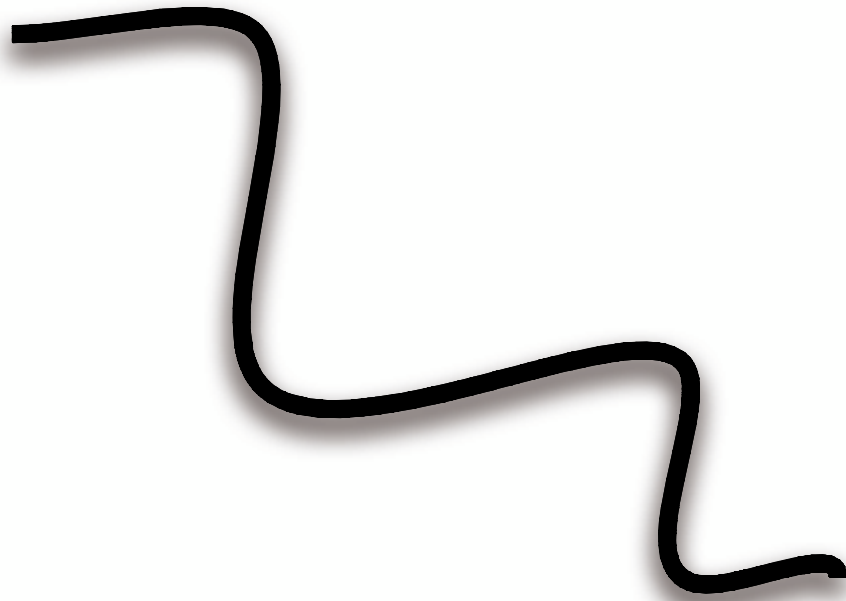
STRATIFICATION

The idea is that transnational grows from the national.

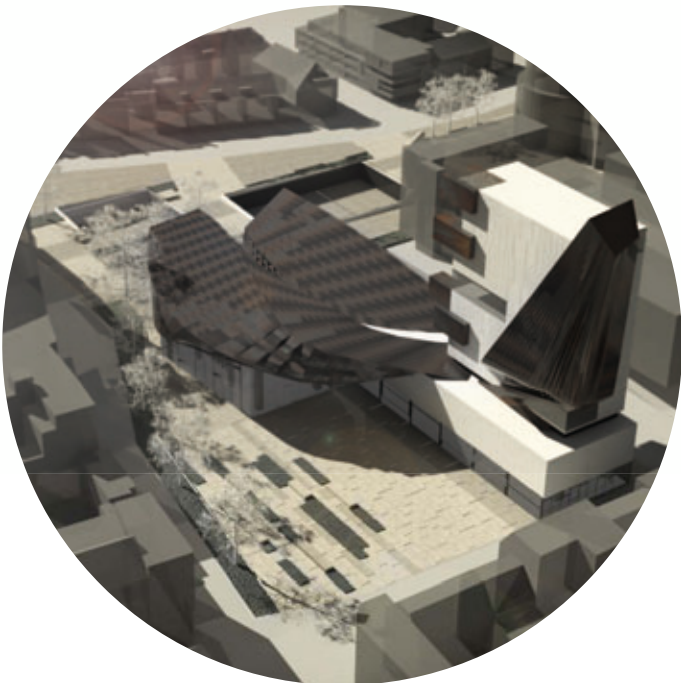
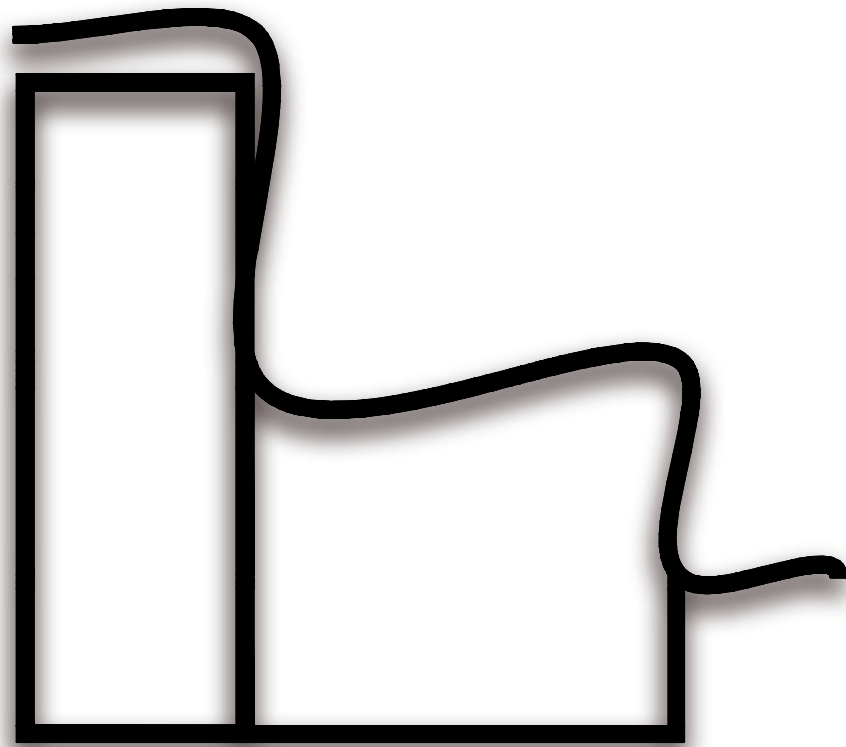
EXISTING = NATIONAL



NEW = TRANSNATIONAL



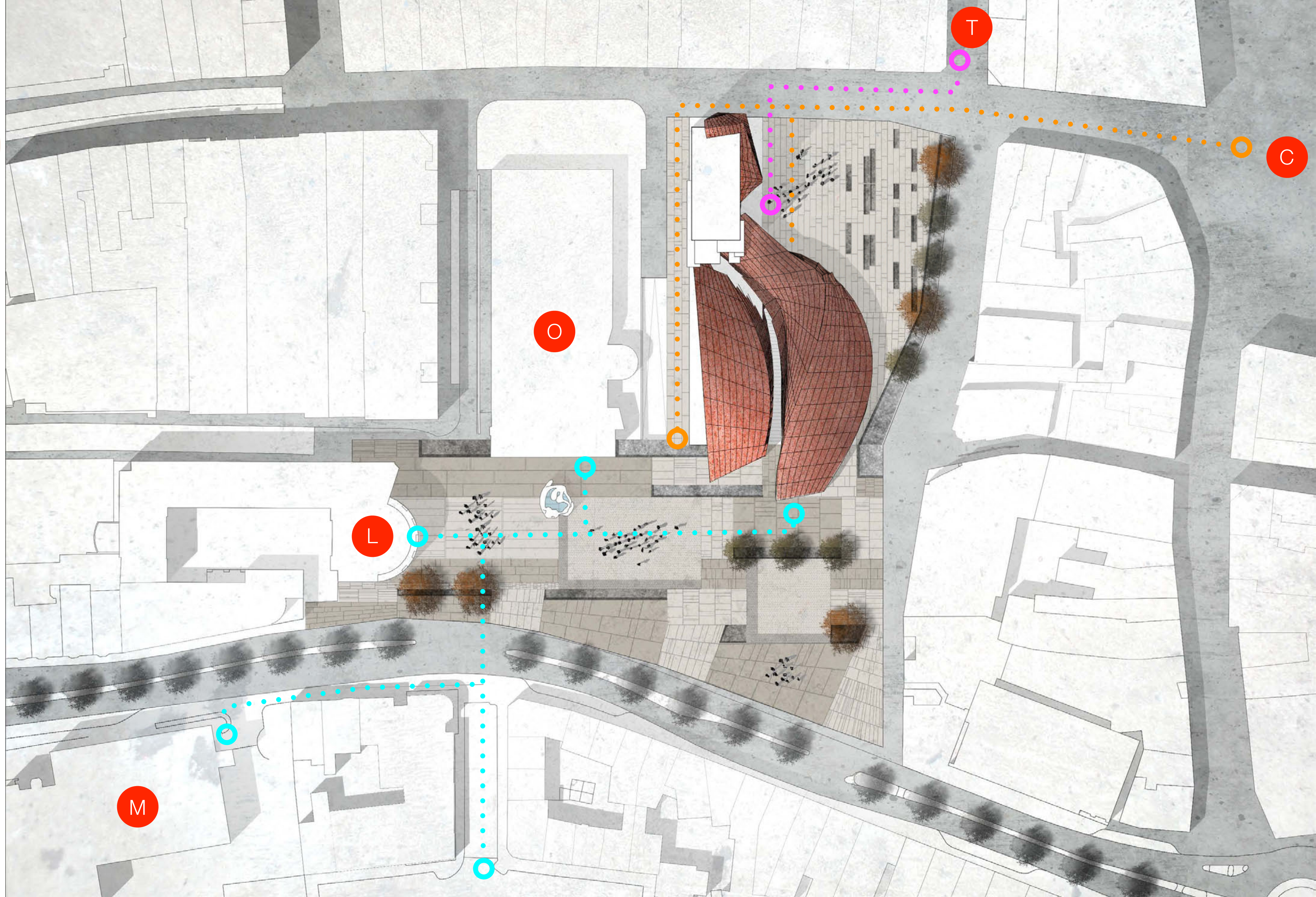
NEW TOWN HALL



CONNECTION

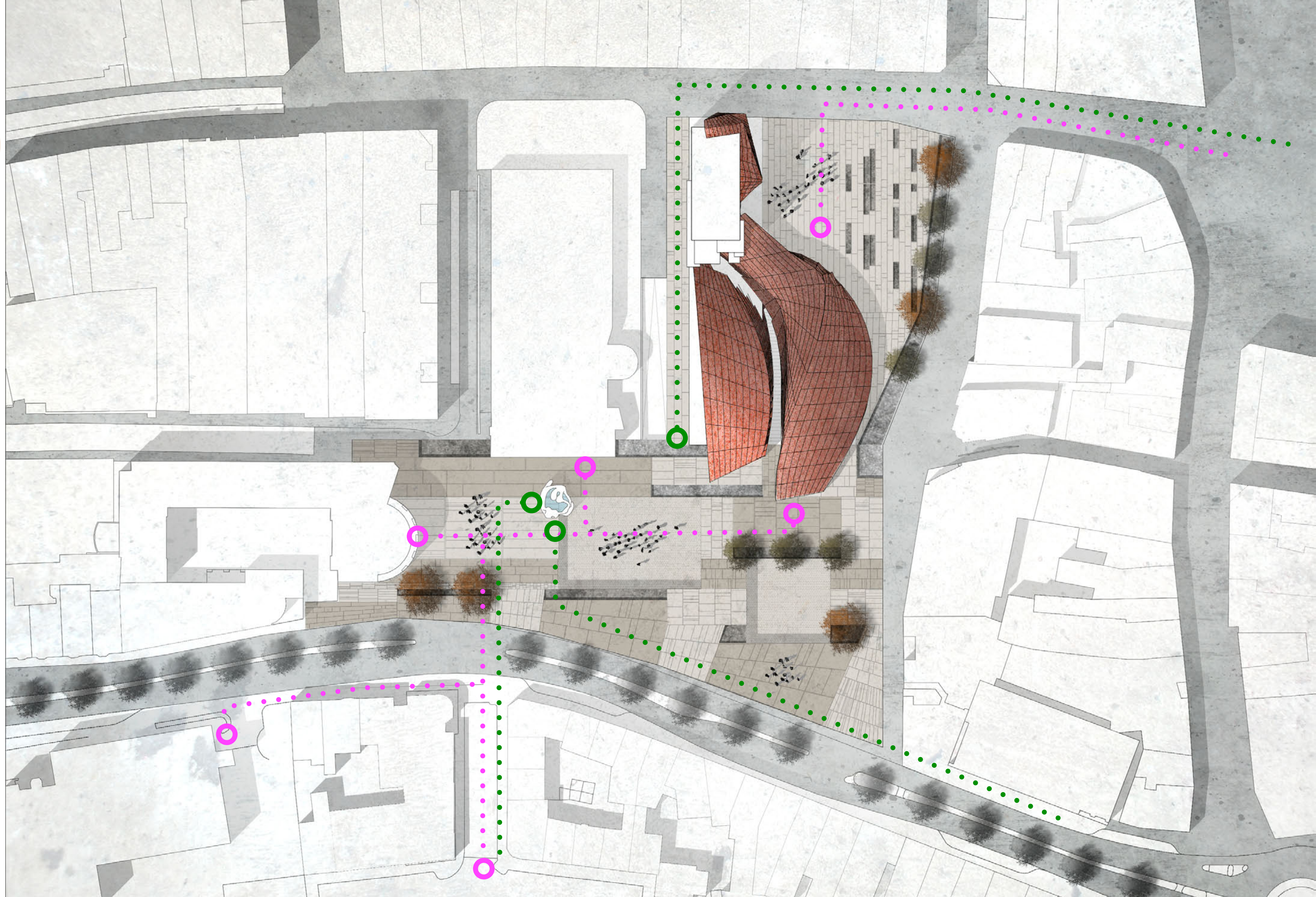
The project creates a hub that connects different existing elements in the area

- T TRAIN STATION
- C CHURCH/ HISTORIC TOWN
- L LIBRARY
- O OLD TOWN HALL
- M MUSEUM
- FROM/TO NEW TOWN
- FROM/TO HISTORIC TOWN
- FROM/TO TRAIN STATION



CONNECTION

The project aims to connect the historic town and the new one through a commercial/public pole.

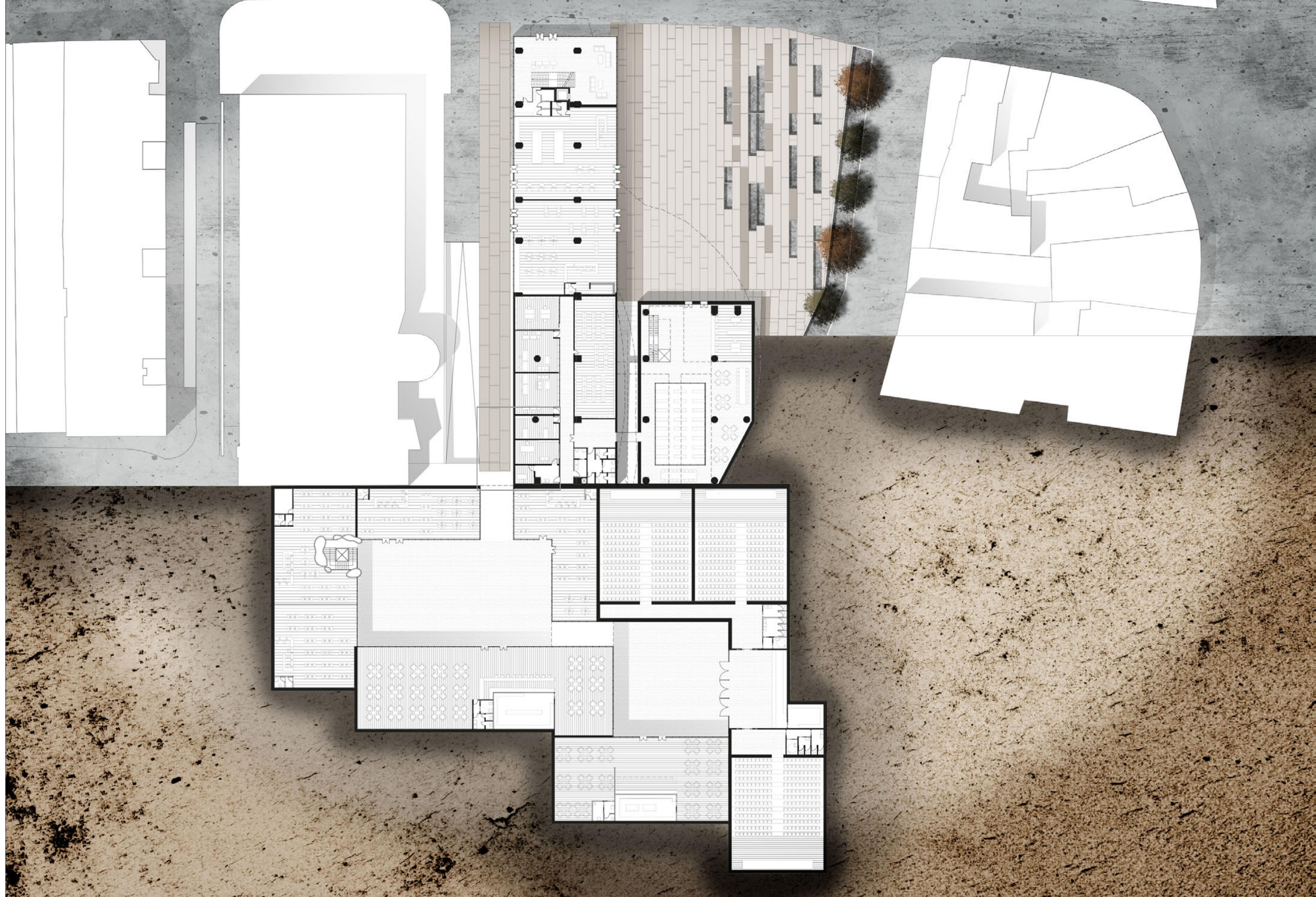


- PUBLIC FLOW
- COMMERCIAL FLOW

SITEPLAN



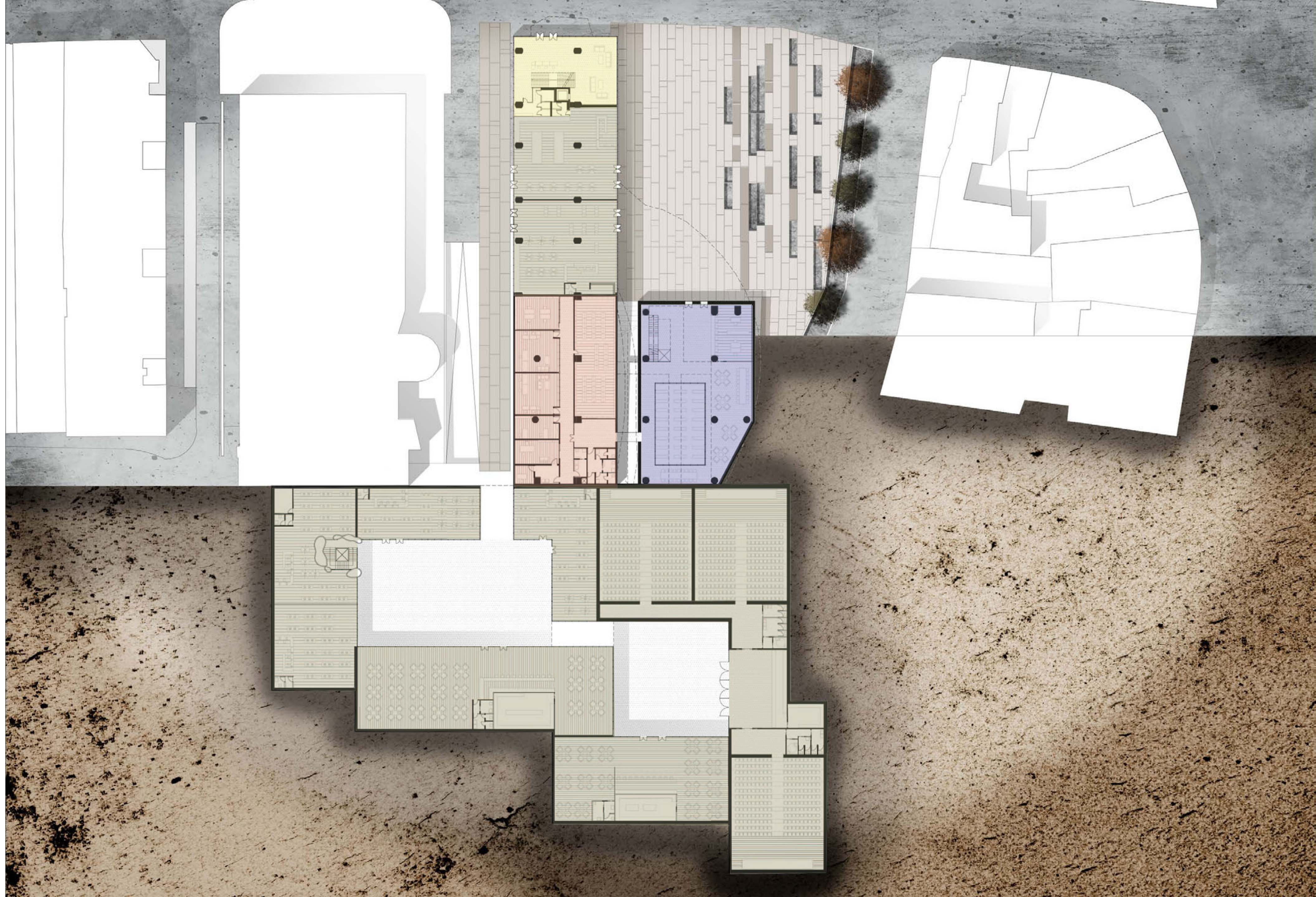
LEVEL
0.00



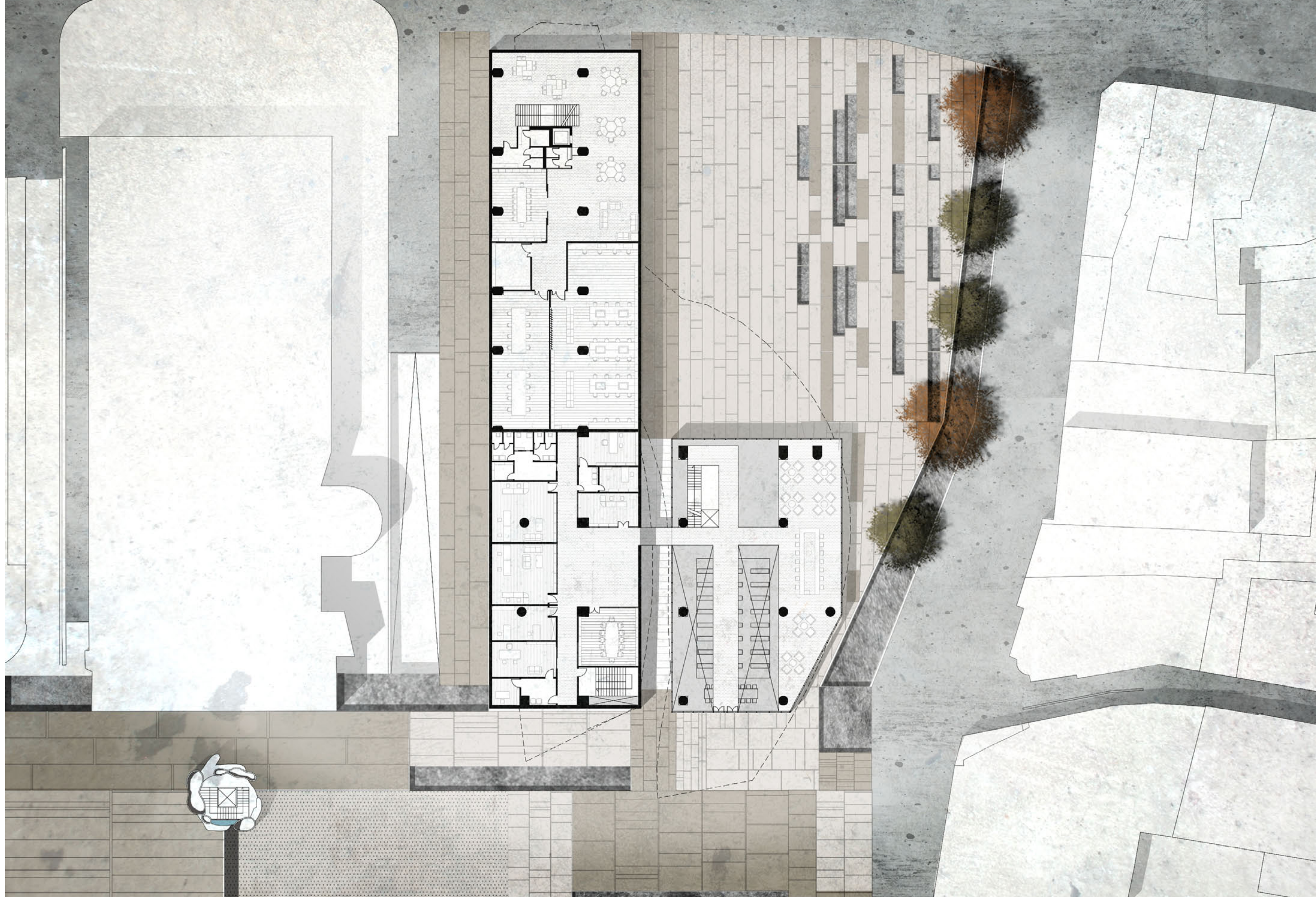
LEVEL
0.00

FUNCTIONS

- PUBLIC
- ADMINISTRATION
- DEVELOPMENT
- COMMERCIAL



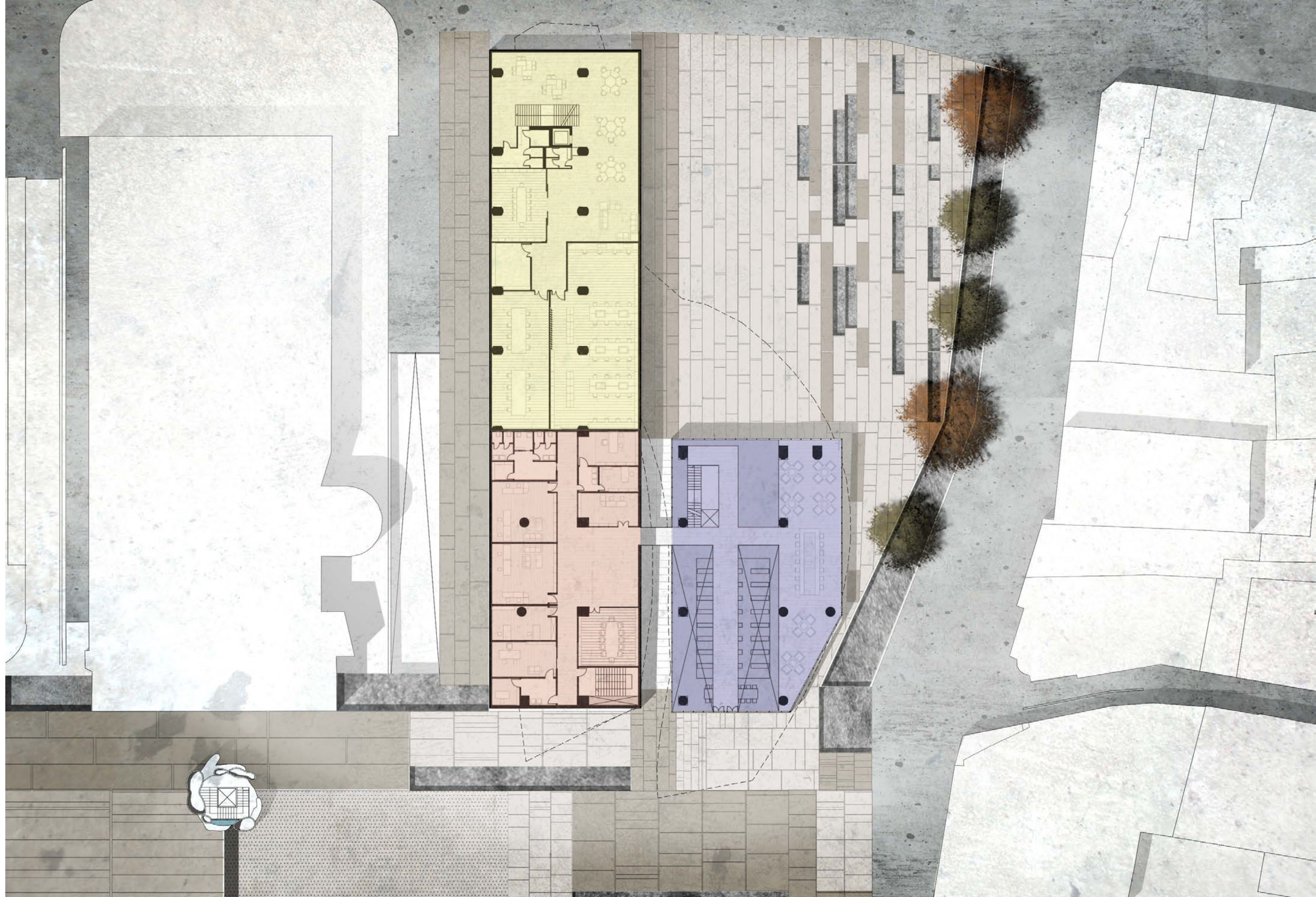
LEVEL
+4.00



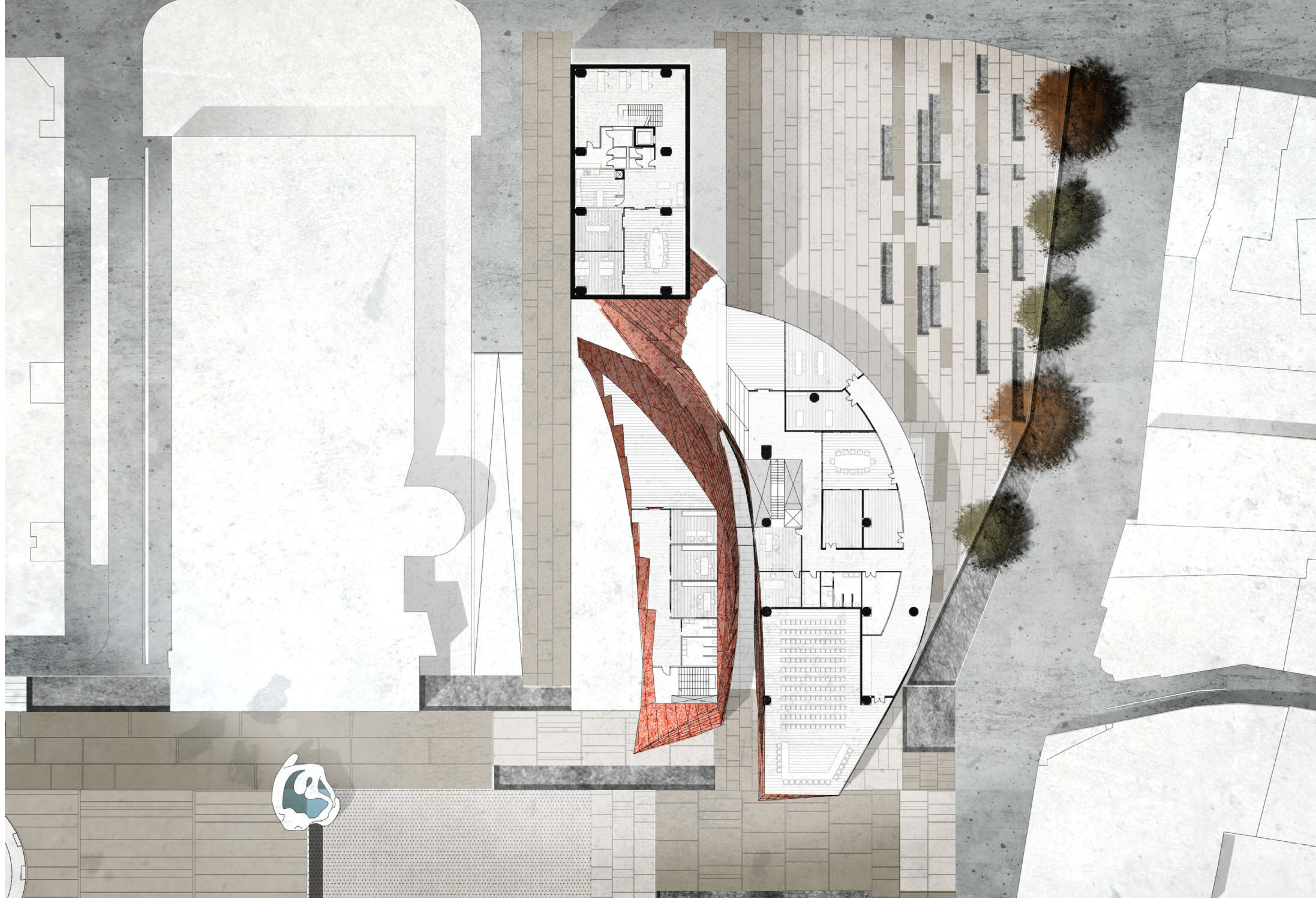
LEVEL
+4.00

FUNCTIONS

- PUBLIC
- ADMINISTRATION
- DEVELOPMENT
- COMMERCIAL



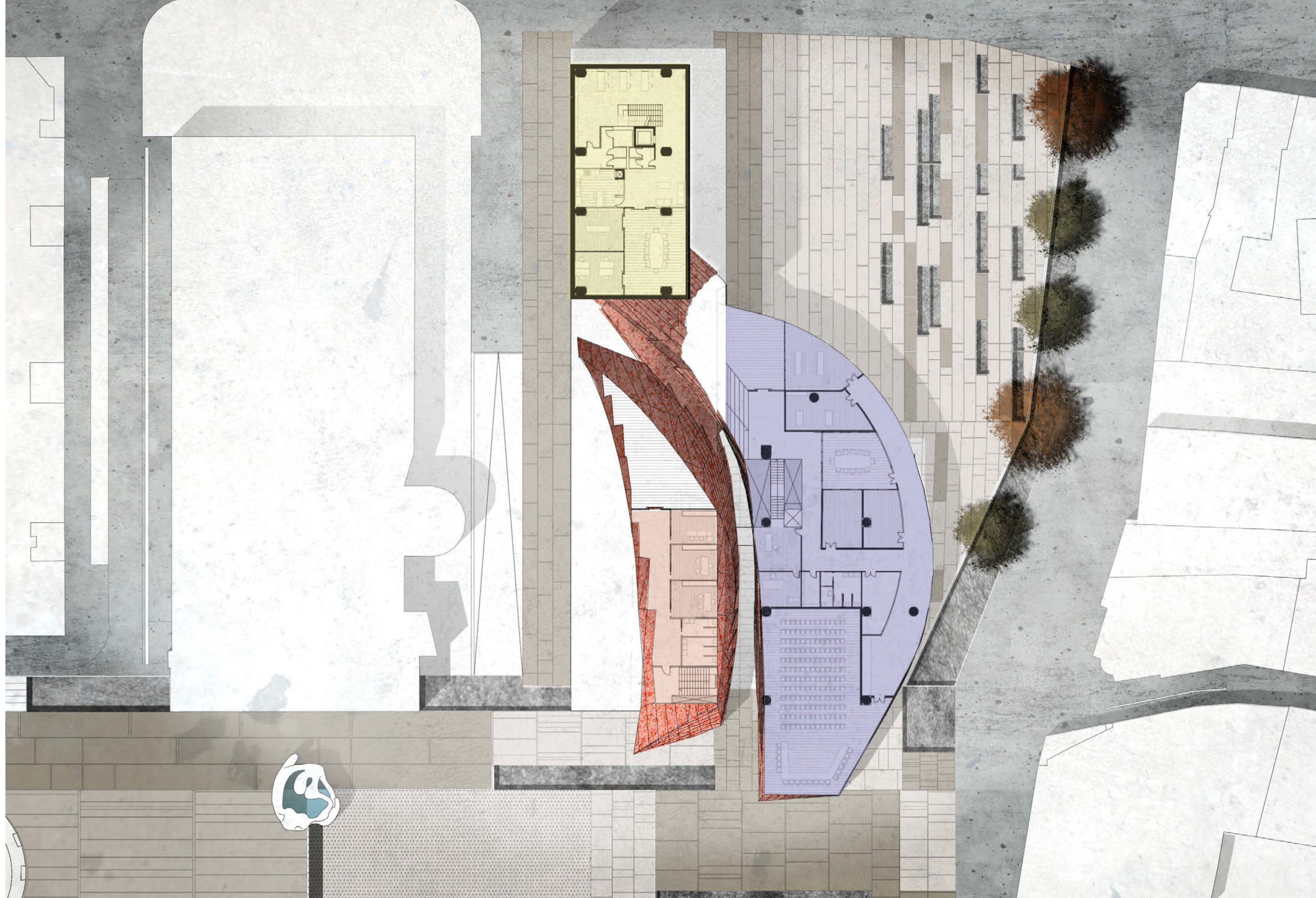
LEVEL
+8.00



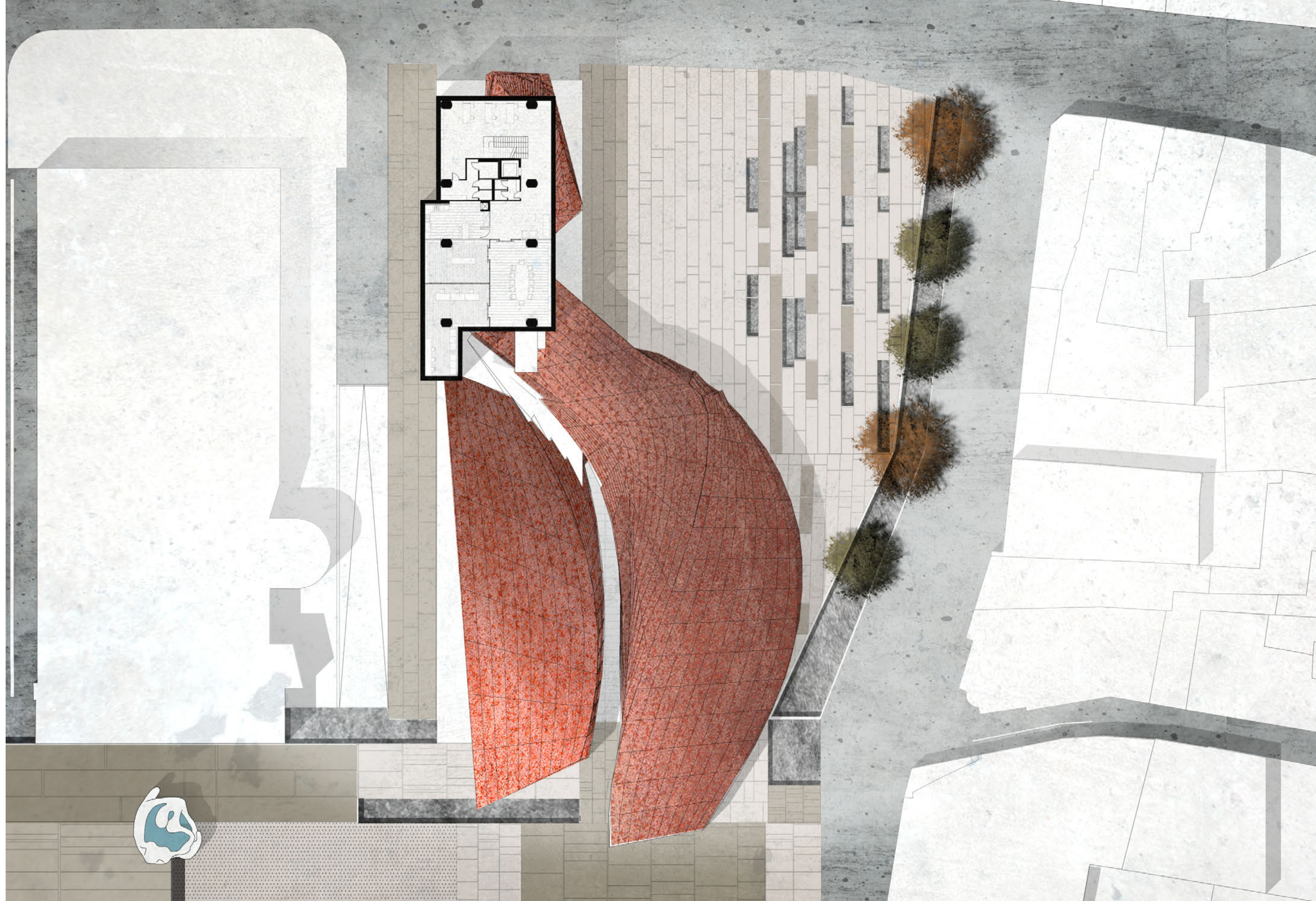
LEVEL
+8.00

FUNCTIONS

- PUBLIC
- ADMINISTRATION
- DEVELOPMENT
- COMMERCIAL



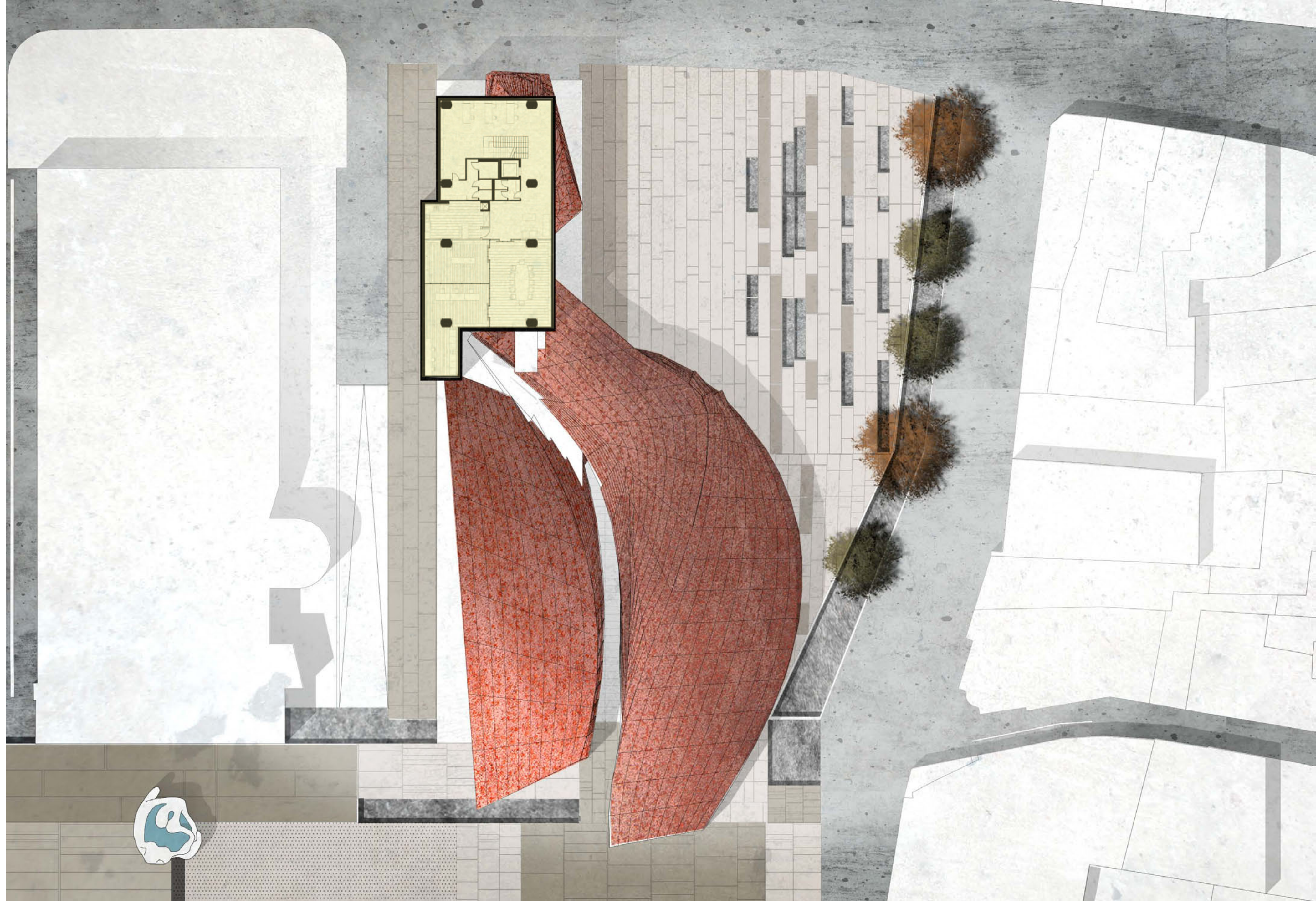
LEVEL
+12.00



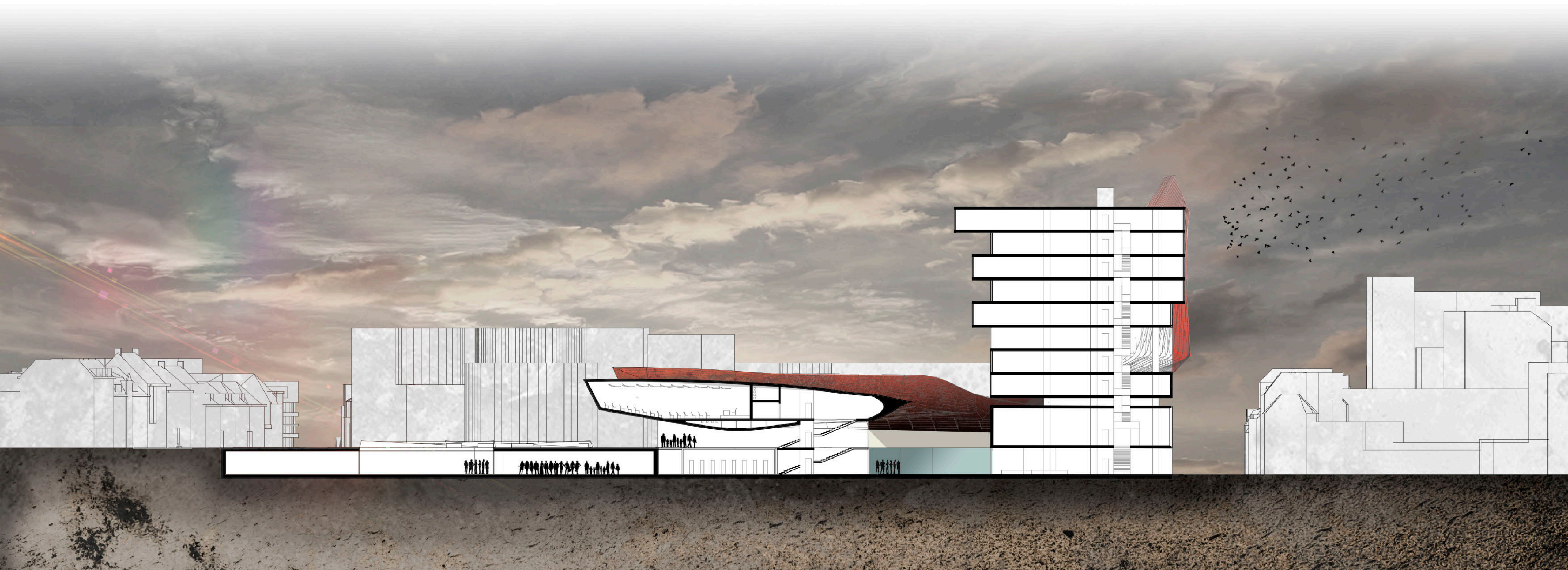
LEVEL
+12.00

FUNCTIONS

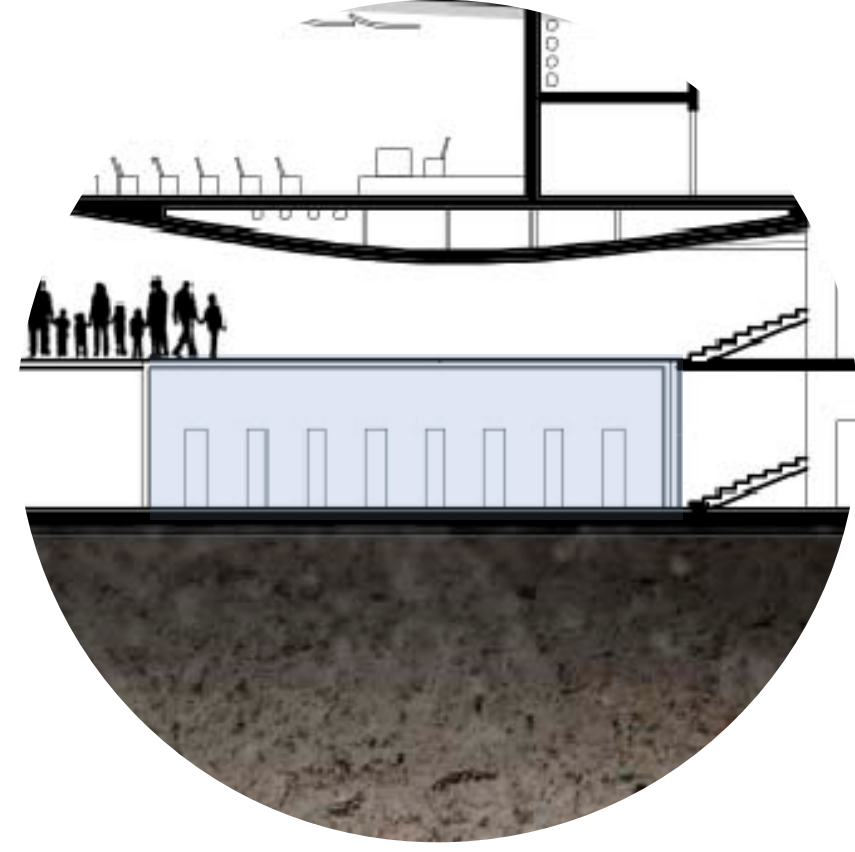
- PUBLIC
- ADMINISTRATION
- DEVELOPMENT
- COMMERCIAL



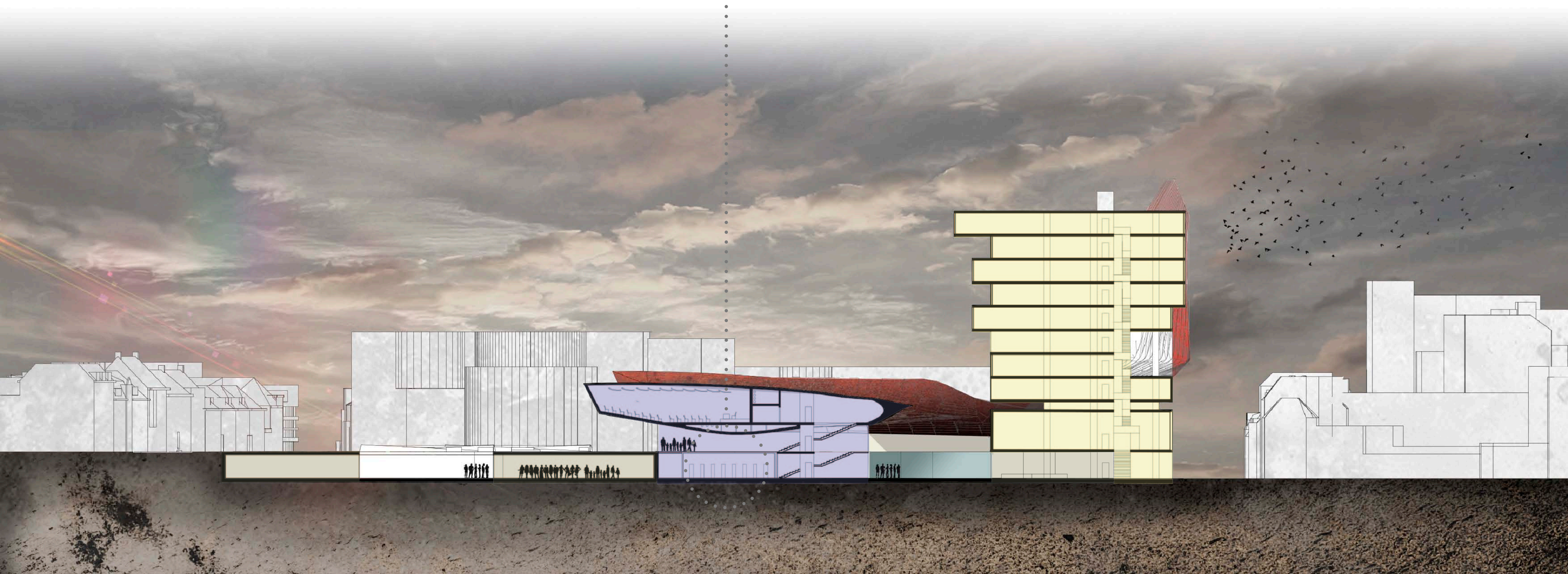
SECTION



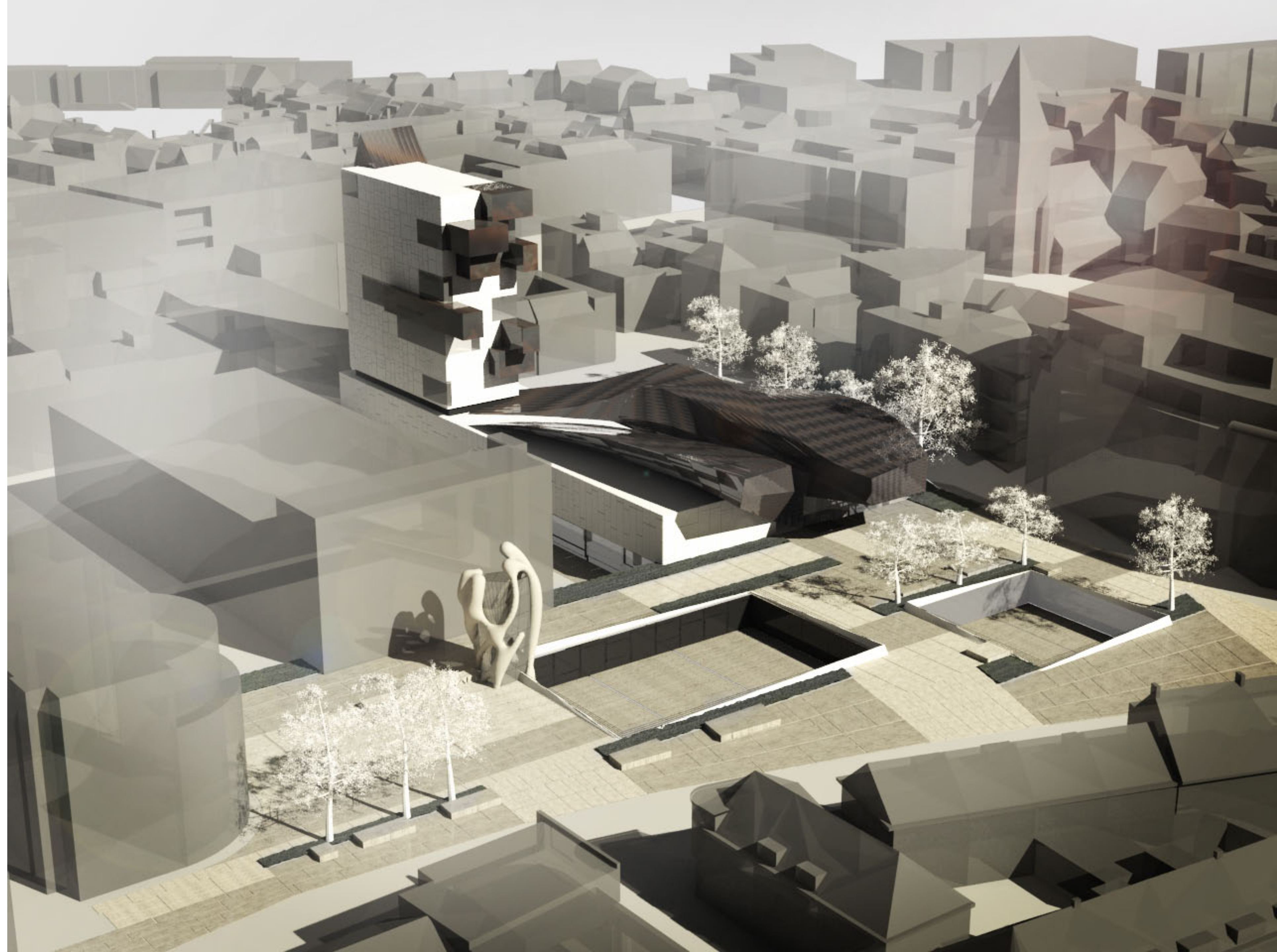
SECTION
FUNCTIONS



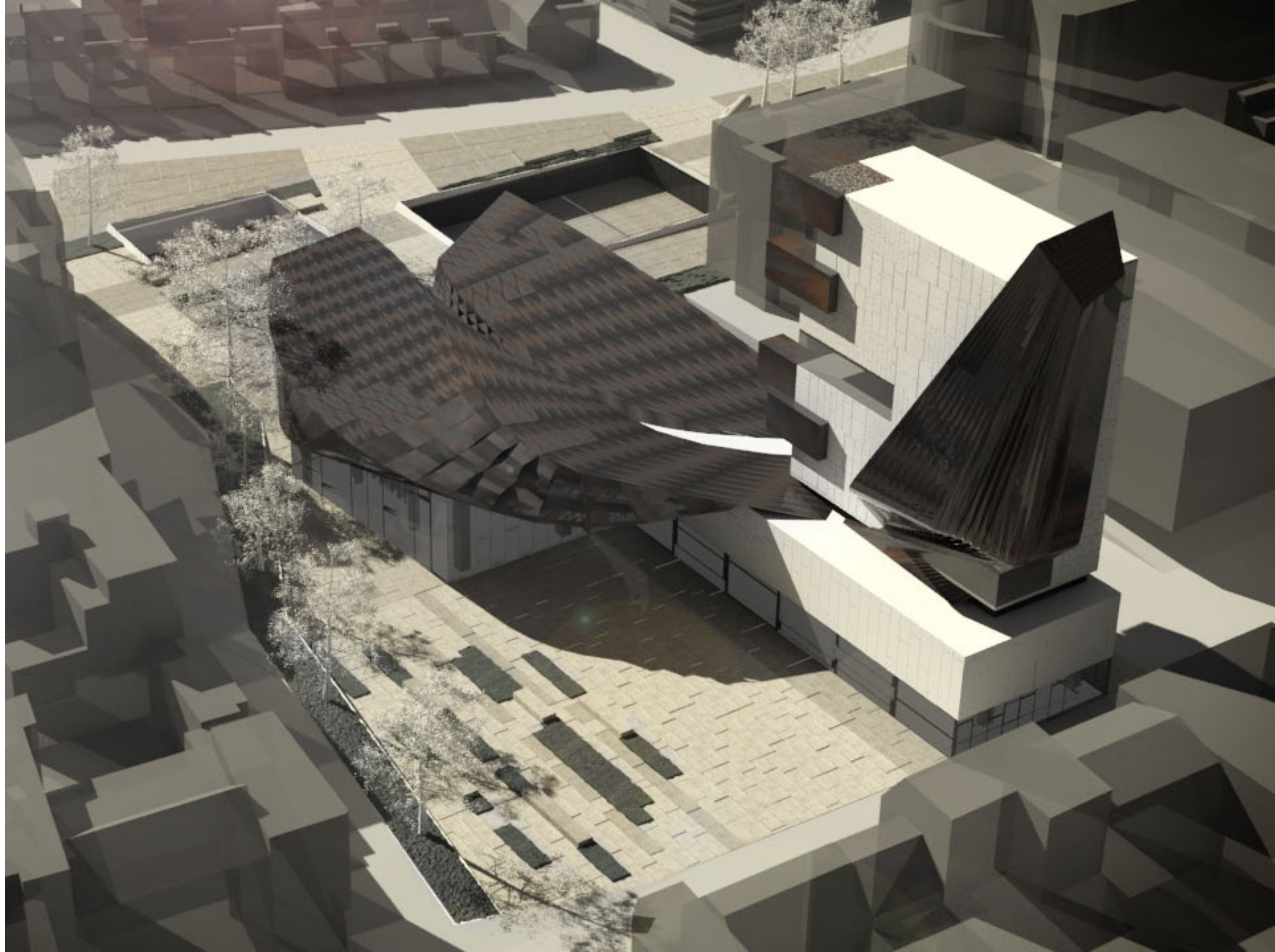
- PUBLIC
- ADMINISTRATION
- DEVELOPMENT
- COMMERCIAL
- DATA CENTER



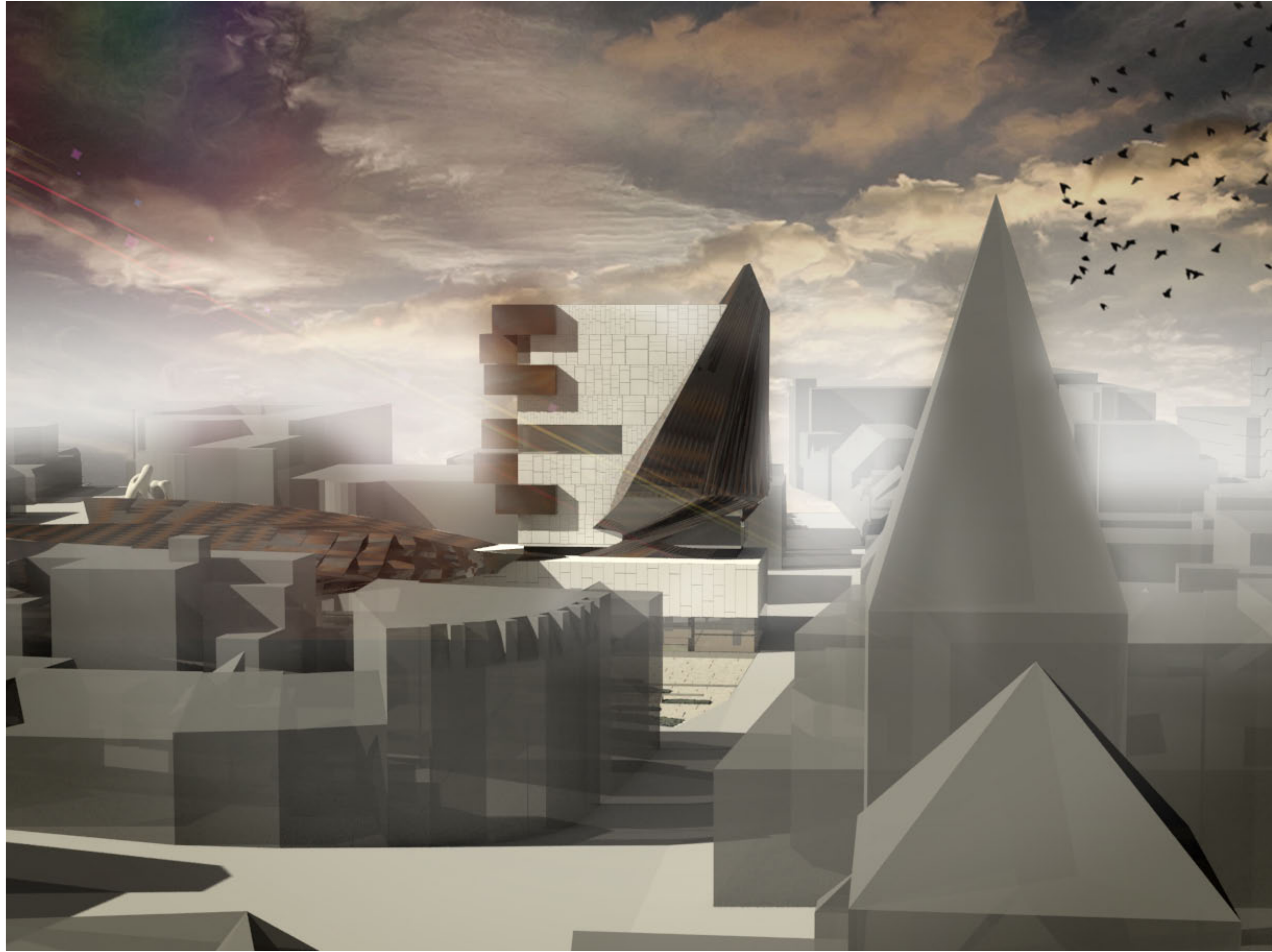
VIEW
[S.W]



VIEW
[N.E]



VIEW
[E]



Visual relationship
between the new
landmark and the
existing one

VIEW
[W]



VIEW
[S.W]



“Europe is an idea not a place”.

Bernard-Henri Lévy